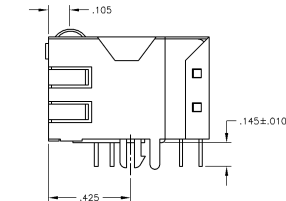
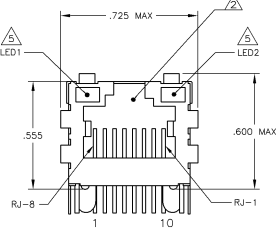
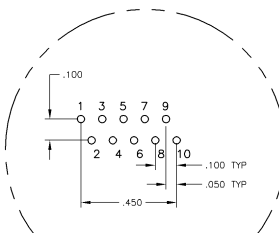
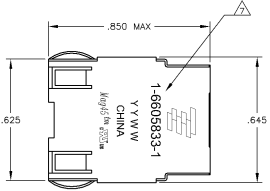


REV. NO.		REVISIONS		DATE	BY	CHK	APP
AA	22						
B		REV PER	ECO-06-026390				

MECHANICAL:

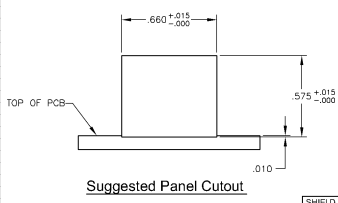


- MATERIALS**
- HOUSING - THERMOPLASTIC PET POLYESTER FLAMMABILITY RATING UL 94V-0
 - SHIELD - .010" THICK, C26800 BRASS PREPLATED WITH 30μINCH MIN SEMI-BRIGHT NICKEL. SOLDER TABS POST DIPPED WITH 100μINCH MIN SAC SOLDER.
 - MOD JACK CONTACTS - 0.0157" x 0.018" PHOSPHOR BRONZE, 50μINCH MIN OVERALL NICKEL UNDERPLATE, WITH SELECT 50μINCH MIN HARD GOLD FINISH PLATE.
 - SOLDER TABS WITH 100μINCH MIN MATTE TIN AND/OR SAC SOLDER DIP.
 - LIGHT EMITTING DIODE(LED) - DIFFUSED EPDXY LENS, .020" x .020" CARBON STEEL WIREFRAME LEADS PRE-PLATED WITH 80μINCH SILVER OVER 40μINCH NICKEL UNDERPLATE OVER 40μINCH COPPER UNDERPLATE, POST-PLATED WITH 100μINCH MIN MATTE TIN AND/OR SAC SOLDER DIP OR PURE TIN SOLDER DIP.

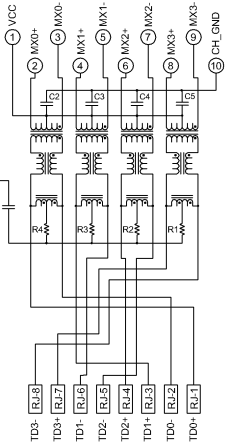
- MAGNETICS**
- APPLICATION: 10/100/1000 BASE-T
 - IMPEDANCE: 100 OHMS
 - TURNS RATIO (CHP-CABLE): 1:1 ALL FOUR PAIRS
 - OPEN CIRCUIT INDUCTANCE (OCL): 35nH MIN @100kHz, 0.1VRMS, 8mADC BIAS FROM 0°C TO 70°C, ALL FOUR PAIRS
 - ALL FOUR PAIRS BI-DIRECTIONAL
 - PERFORMANCE @ 25°C
 - INSERTION LOSS (IL): 1.1dB MAX FROM 0.5MHZ TO 100MHZ
 - RETURN LOSS (RL): 18dB MIN FROM 0.5MHZ TO 40MHZ
 - ATTENUATION: 20-20LOG(F/80)dB MIN FROM 40.1MHZ TO 100MHZ
 - CROSSTALK ATTENUATION: 35dB MIN FROM 0.5MHZ TO 40MHZ
 - 33-20LOG(F/50)dB MIN FROM 40.1MHZ TO 100MHZ
 - COMMON MODE REJECTION RATIO (CMRR): 30dB MIN FROM 0.5MHZ TO 100MHZ
 - ISOLATION VOLTAGE: COMPLIES WITH IEEE802.3 2002, PARA 4.0.6.1.1, ITEM b.

- OPERATING TEMPERATURE: FROM 0°C TO +70°C.**
- THE 250 OHM LED RESISTORS ARE OPTIONAL, PLEASE SEE CHART FOR PRESENCE OR ABSENCE OF LED RESISTORS. IF THE LED WITHOUT 250 OHM RESISTORS, LED IS DRIVEN WITH CONSTANT CURRENT AT APPROX 20mA.**
- LED COLOR: DOMINANT WAVELENGTH (DD): GREEN 568 nm TYP. @ IF=20mA**
FORWARD VOLTAGE (VF): GREEN 2.2V TYP. @ IF=20mA
DOMINANT WAVELENGTH (XD): YELLOW 588 nm TYP. @ IF=20mA
FORWARD VOLTAGE (VF): YELLOW 2.1V TYP. @ IF=20mA
- IF THE LED WITH 250 OHM RESISTORS, LED IS DRIVEN WITH 5V VOLTAGE AND THE MAX OPERATING CURRENT IS 20mA.**
LED COLOR: DOMINANT WAVELENGTH (DD): GREEN 568 nm TYP. @ VF=5V
FORWARD CURRENT (IF): GREEN 12 mA TYP. @ VF=5V

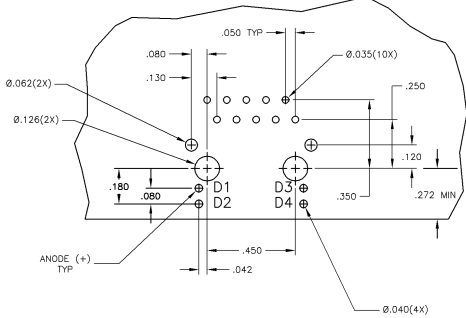
- THE MAGNETICS ARE SYMMETRIC AND SUPPORT AUTO-MDI/MDX.**
- TYCO ELECTRONICS LOGO, PART NUMBER, DATE CODE, COUNTRY OF ORIGIN AND AGENCY APPROVAL MARKING IN APPROXIMATE LOCATION SHOWN.**
- THESE PARTS ARE RECOMMENDED FOR WAVE SOLDERING PROCESS. PREHEAT TEMPERATURE IS 120°C TO 160°C, 120 SECONDS TO 180 SECONDS, PEAK WAVE SOLDERING TEMPERATURE IS 260°C MAX. 10 SECONDS MAX.**



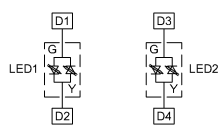
7G05P1 SERIES MAGNETIC CIRCUIT



- C1 = 1000 pF, 21V CAPACITOR**
R1-R4 = 75 OHMS, 1/16 W RESISTORS
C2-C5 = 0.1uF, 50V, X7R CAPACITORS



Suggested PCB Layout (Component Side)



LED CONFIGURATION FOR 6605833-E ONLY

GREEN	YES	GREEN	YES	1-6605833-1
GREEN/YELLOW	NO	GREEN/YELLOW	NO	6605833-6
LED1	250 OHM RESISTOR	LED2	250 OHM RESISTOR	PART NUMBER

THIS DRAWING IS A CONTROLLED DOCUMENT. THE VERSION CONTROLLED BY: Tyco Electronics Corporation, Chunging, China.

DESCRIPTION	QUANTITY	UNIT	REVISION	DATE	BY	CHK	APP
1X1 MAG45(TM), 704P1 SCHEMATIC, (10/100/1000 ETHERNET) 705P1 GIGABIT CIRCUIT, SHIELDED, DECOUPLING CAPACITOR, WITH LEADS	108-2100						
SIZE	DATE CODE	ISSUE NO	REVISED TO				
METHOD	REVISION	DATE	BY	CHK	APP		

CUSTOMER DRAWING