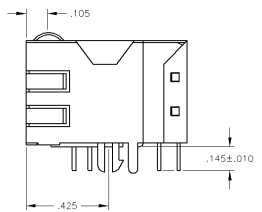
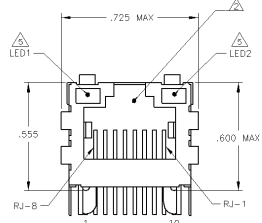
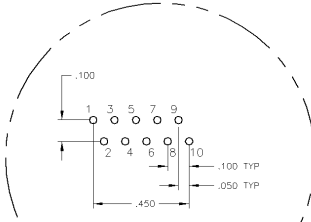
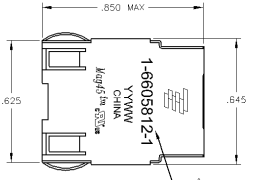
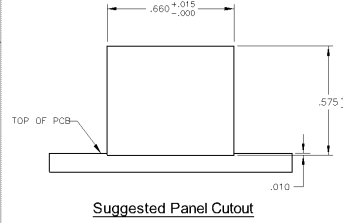


MECHANICAL:

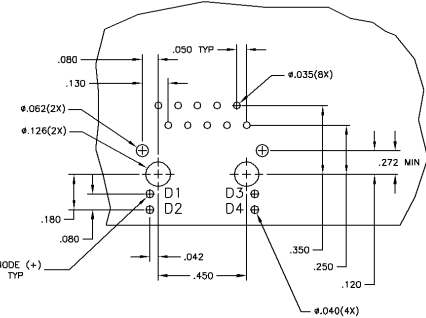
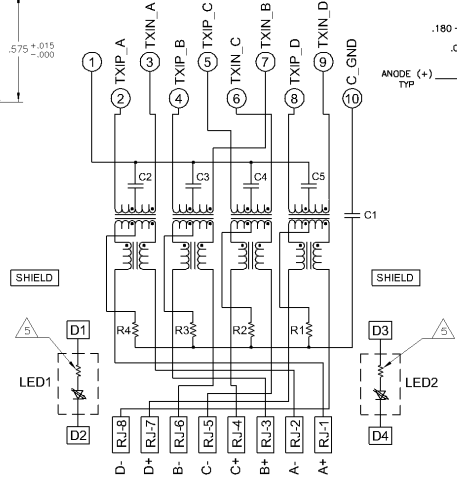


- MATERIALS**
- HOUSING - THERMOPLASTIC PET POLYESTER FLAMMABILITY RATING UL 94V-0
 - SHIELD - 0.010" THICK, C26800 BRASS PREPLATED WITH 30µNCH MIN SEMI-BRIGHT NICKEL. SOLDER TABS POST DIPPED WITH 100µNCH MIN SAC SOLDER
 - MOD JACK CONTACTS - 0.0157" x 0.018" PHOSPHOR BRONZE, 50µNCH MIN OVERALL NICKEL UNDERPLATE, WITH SELECT 50µNCH MIN HARD GOLD FINISH PLATE
 - SOLDER TAILS WITH 100µNCH MIN MATTE TIN AND/OR SAC SOLDER DIP
 - LIGHT EMITTING DIODE(LED) - DIFFUSED EPOXY LENS, 0.020" x 0.020" CARBON STEEL
 - WIREFRAME LEADS PRE-PLATED WITH 80µNCH SILVER OVER 40µNCH NICKEL UNDERPLATE OVER 40µNCH COPPER UNDERPLATE, POST-PLATED WITH 100µNCH MIN MATTE TIN AND/OR SAC SOLDER DIP OR PURE TIN SOLDER DIP
- PJAS JACK CAVITY CONFORMS TO FCC RULES AND REGULATIONS PART 68, SUB PART F**
- MAGNETICS**
- IMPEDANCE 100 OHMS
 - TURNS RATIO (CHP. CABLE): 1:1 ALL FOUR PAIRS
 - OPEN CIRCUIT INDUCTANCE (OCL): 350µH MIN @100kHz, 0.1VRMS, 8mA DC BIAS FROM 0°C TO 70°C, ALL FOUR PAIRS
 - ALL FOUR PAIRS BI-DIRECTIONAL
 - PERFORMANCE @ 25°C
 - INSERTION LOSS (IL): 1.1dB MAX FROM 0.5MHz TO 100MHz
 - RETURN LOSS (RL): 18dB MIN FROM 0.5MHz TO 40MHz
 - 12-20LOG(f/80)dB MIN FROM 4.0MHz TO 100MHz
 - CROSSTALK ATTENUATION: 35dB MIN FROM 0.5MHz TO 40MHz
 - 33-20*LOG(f/50)dB MIN FROM 4.0MHz TO 100MHz
 - COMMON MODE REJECTION RATIO (CMRR): 30dB MIN FROM 0.5MHz TO 100MHz
 - ISOLATION VOLTAGE: COMPLIES WITH IEEE892.3 2002, PARA 4.0.6.1.1 ITEM 6.
- OPERATING TEMPERATURE: FROM 0°C TO +70°C**



ELECTRICAL:

7G02 SERIES MAGNETIC CIRCUIT



- THE 250 OHM LED RESISTORS ARE OPTIONAL. PLEASE SEE CHART FOR PRESENCE OR ABSENCE OF LED RESISTORS. IF THE LED WITHOUT 250 OHM RESISTORS, LED IS DRIVEN WITH CONSTANT CURRENT AT APPROX 20mA**
- LED COLOR: DOMINANT WAVELENGTH (D.D): GREEN 568 nm TYP. at IF=20mA**
 FORWARD VOLTAGE (VF): GREEN 2.2V TYP. at IF=20mA
 DOMINANT WAVELENGTH (D.D): YELLOW 588 nm TYP. at IF=20mA
 FORWARD VOLTAGE (VF): YELLOW 2.1V TYP. at IF=20mA
- IF THE LED WITH 250 OHM RESISTORS, LED IS DRIVEN WITH 5V VOLTAGE AND THE MAX OPERATING CURRENT IS 20mA**
 LED COLOR: DOMINANT WAVELENGTH (D.D): GREEN 568 nm TYP. at VF=5V
 FORWARD CURRENT (IF): GREEN 12 mA TYP. at VF=5V
 DOMINANT WAVELENGTH (D.D): YELLOW 588 nm TYP. at VF=5V
 FORWARD CURRENT (IF): YELLOW 13 mA TYP. at VF=5V
- THE MAGNETICS ARE SYMMETRIC TO SUPPORT AUTO-MDI/MOIX**
- TYCO ELECTRONICS LOGO, PART NUMBER, DATE CODE, COUNTRY OF ORIGIN AND AGENCY APPROVAL MARKING IN APPROXIMATE LOCATION SHOWN**
- 5. THESE PARTS ARE RECOMMENDED FOR WAVE SOLDERING PROCESS, PEAK WAVE SOLDERING TEMPERATURE IS 265°C MAX, 10 SECONDS MAX.**

C1 = 1000 µF, 28V DECOUPLING CAPACITOR
 C2-C5 = 0.1 µF, 50V CAPACITORS
 R1-R4 = 75 OHMS, 1/16 W, 5% RESISTORS

THIS DRAWING IS A CONTROLLED DOCUMENT.	DATE	REV	DESCRIPTION	BY	CHK
DATE	108-2100		7G2 SCHEMATIC 7G02 SERIES GIGABIT CIRCUIT, SHIELDED, WITH RESISTOR LEADS		
SCALE	1:1				
APPROVED	AA	22			
CUSTOMER DRAWING					