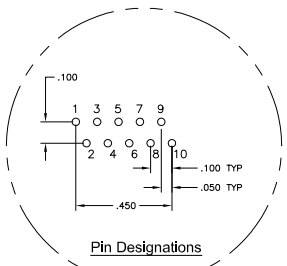
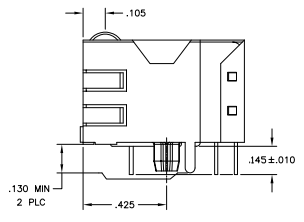
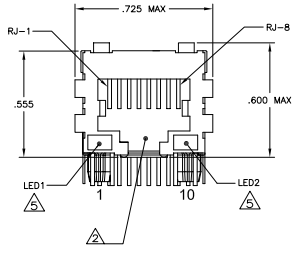
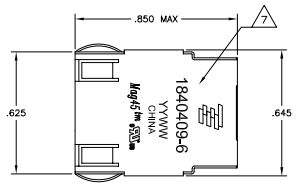
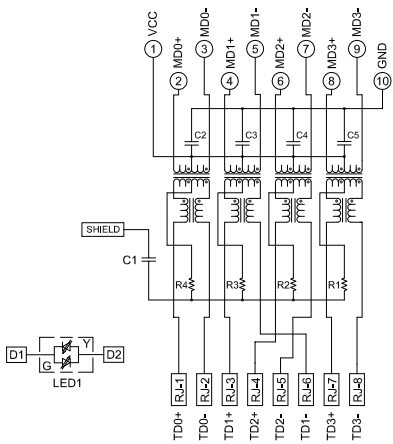


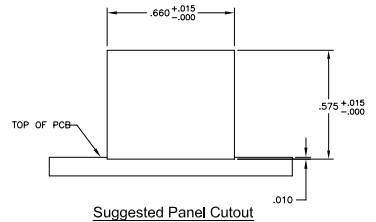
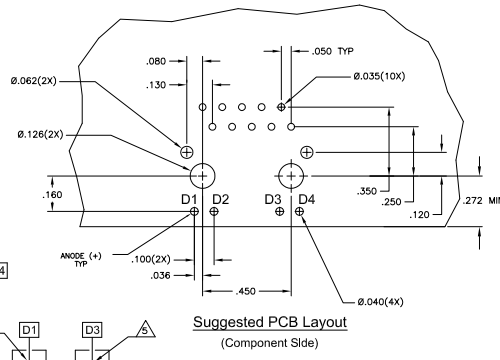
**MECHANICAL:**



**4G06ETP1 Series GIGABIT Magnetic Circuit**



R1-R4=75 OHMS, 1/16W RESISTORS  
 C1=1000 pF, 30V DECOUPLING CAPACITOR  
 C2-C5=0.1uF, 5%, 50V, X7R CAPACITORS



- MATERIALS:**  
 HOUSING - THERMOPLASTIC PET POLYESTER FLAMMABILITY RATING UL 94V-0.  
 SHIELD - .010" THICK, C26800 BRASS PREPLATED WITH 30μINCH SEMI-BRIGHT NICKEL.  
 SOLDER TABS POST DIPPED WITH 100μINCH MIN SAC SOLDER.  
 MOD JACK CONTACTS - 0.0157" X 0.018" PHOSPHOR BRONZE, 50μINCH MIN OVERALL NICKEL UNDERPLATE, WITH SELECT 50μINCH MIN HARD GOLD FINISH PLATE SOLDER TAILS WITH 100μINCH MIN MATTE TIN AND/OR SAC SOLDER DIP.  
 LIGHT EMITTING DIODE(LED) - DIFFUSED EPOXY LENS, .020" x .020" CARBON STEEL WIREFRAME LEADS PRE-PLATED WITH 80μINCH SILVER OVER 40μINCH NICKEL UNDERPLATE OVER 40μINCH COPPER UNDERPLATE. POST-PLATED WITH 100μINCH MIN MATTE TIN AND/OR SAC SOLDER DIP OR PURE TIN SOLDER DIP.
- RJ45 JACK CAVITY CONFORMS TO FCC RULES AND REGULATIONS PART 68, SUB PART F.**
- MAGNETICS**  
 -APPLICATION: 10/100/1000 BASE-T, EXTENDED TEMPERATURE  
 -IMPEDANCE: 100 OHMS  
 -TURNS RATIO (CHIP: CABLE): 1:1 ALL FOUR PAIRS  
 -OPEN CIRCUIT INDUCTANCE (OCL): 350uH MIN @100kHz, 0.1VRMS, 5mA DC BIAS FROM -40°C TO +85°C, ALL FOUR PAIRS  
 -ALL FOUR PAIRS BI-DIRECTIONAL  
 -PERFORMANCE @ 25°C:  
 INSERTION LOSS (IL): 1.1dB MAX FROM 0.5MHz TO 100MHz  
 RETURN LOSS (RL): 18dB MIN FROM 0.5MHz TO 40MHz  
 12-20LOG(S10)dB MIN FROM 40.1MHz TO 100MHz  
 CROSSTALK ATTENUATION: 35dB MIN FROM 0.5MHz TO 40MHz  
 33-20LOG(S10)dB MIN FROM 40.1MHz TO 100MHz  
 COMMON MODE REJECTION RATIO (CMRR): 30dB MIN FROM 0.5MHz TO 100MHz  
 ISOLATION VOLTAGE: COMPLIES WITH IEEE802.3 2002, PARA 40.6.1.1, ITEM b.
- OPERATING TEMPERATURE: FROM -40°C TO +85°C**
- LED IS DRIVEN WITH CONSTANT CURRENT AT APPROX 20mA.**  
 LED COLOR: DOMINANT WAVELENGTH (λ D): GREEN 568 nm TYP. at IF=20mA  
 FORWARD VOLTAGE (VF): GREEN 2.2V TYP. at IF=20mA  
 DOMINANT WAVELENGTH (λ D): YELLOW 588 nm TYP. at IF=20mA  
 FORWARD VOLTAGE (VF): YELLOW 2.1V TYP. at IF=20mA
- THE MAGNETICS ARE SYMMETRIC, AND SUPPORT AUTO-IDMIXING.**
- TYCO ELECTRONICS LOGO, PART NUMBER, DATE CODE, COUNTRY OF ORIGIN AND AGENCY APPROVAL MARKING IN APPROXIMATE LOCATION SHOWN.**
- THE PART IS RECOMMENDED FOR WAVE SOLDERING PROCESS. PREHEAT TEMPERATURE IS 120°C TO 160°C, 120 SECONDS TO 180 SECONDS. PEAK WAVE SOLDERING TEMPERATURE IS 260°C MAX, 10 SECONDS MAX.**

YELLOW	GREEN	1840409-9
GREEN/YELLOW	GREEN/YELLOW	1840409-6
LED1	LED2	PART NUMBER

THIS DRAWING IS A CONTROLLED DOCUMENT		TYCO Electronics Corporation
DATE	REV	DESCRIPTION
0	1	1840409-6 (REV. 00)
1	1	1840409-6 (REV. 01)
2	1	1840409-6 (REV. 02)
3	1	1840409-6 (REV. 03)
4	1	1840409-6 (REV. 04)
5	1	1840409-6 (REV. 05)
6	1	1840409-6 (REV. 06)
7	1	1840409-6 (REV. 07)
8	1	1840409-6 (REV. 08)
9	1	1840409-6 (REV. 09)
10	1	1840409-6 (REV. 10)
11	1	1840409-6 (REV. 11)
12	1	1840409-6 (REV. 12)
13	1	1840409-6 (REV. 13)
14	1	1840409-6 (REV. 14)
15	1	1840409-6 (REV. 15)
16	1	1840409-6 (REV. 16)
17	1	1840409-6 (REV. 17)
18	1	1840409-6 (REV. 18)
19	1	1840409-6 (REV. 19)
20	1	1840409-6 (REV. 20)
21	1	1840409-6 (REV. 21)
22	1	1840409-6 (REV. 22)
23	1	1840409-6 (REV. 23)
24	1	1840409-6 (REV. 24)
25	1	1840409-6 (REV. 25)
26	1	1840409-6 (REV. 26)
27	1	1840409-6 (REV. 27)
28	1	1840409-6 (REV. 28)
29	1	1840409-6 (REV. 29)
30	1	1840409-6 (REV. 30)
31	1	1840409-6 (REV. 31)
32	1	1840409-6 (REV. 32)
33	1	1840409-6 (REV. 33)
34	1	1840409-6 (REV. 34)
35	1	1840409-6 (REV. 35)
36	1	1840409-6 (REV. 36)
37	1	1840409-6 (REV. 37)
38	1	1840409-6 (REV. 38)
39	1	1840409-6 (REV. 39)
40	1	1840409-6 (REV. 40)
41	1	1840409-6 (REV. 41)
42	1	1840409-6 (REV. 42)
43	1	1840409-6 (REV. 43)
44	1	1840409-6 (REV. 44)
45	1	1840409-6 (REV. 45)
46	1	1840409-6 (REV. 46)
47	1	1840409-6 (REV. 47)
48	1	1840409-6 (REV. 48)
49	1	1840409-6 (REV. 49)
50	1	1840409-6 (REV. 50)
51	1	1840409-6 (REV. 51)
52	1	1840409-6 (REV. 52)
53	1	1840409-6 (REV. 53)
54	1	1840409-6 (REV. 54)
55	1	1840409-6 (REV. 55)
56	1	1840409-6 (REV. 56)
57	1	1840409-6 (REV. 57)
58	1	1840409-6 (REV. 58)
59	1	1840409-6 (REV. 59)
60	1	1840409-6 (REV. 60)
61	1	1840409-6 (REV. 61)
62	1	1840409-6 (REV. 62)
63	1	1840409-6 (REV. 63)
64	1	1840409-6 (REV. 64)
65	1	1840409-6 (REV. 65)
66	1	1840409-6 (REV. 66)
67	1	1840409-6 (REV. 67)
68	1	1840409-6 (REV. 68)
69	1	1840409-6 (REV. 69)
70	1	1840409-6 (REV. 70)
71	1	1840409-6 (REV. 71)
72	1	1840409-6 (REV. 72)
73	1	1840409-6 (REV. 73)
74	1	1840409-6 (REV. 74)
75	1	1840409-6 (REV. 75)
76	1	1840409-6 (REV. 76)
77	1	1840409-6 (REV. 77)
78	1	1840409-6 (REV. 78)
79	1	1840409-6 (REV. 79)
80	1	1840409-6 (REV. 80)
81	1	1840409-6 (REV. 81)
82	1	1840409-6 (REV. 82)
83	1	1840409-6 (REV. 83)
84	1	1840409-6 (REV. 84)
85	1	1840409-6 (REV. 85)
86	1	1840409-6 (REV. 86)
87	1	1840409-6 (REV. 87)
88	1	1840409-6 (REV. 88)
89	1	1840409-6 (REV. 89)
90	1	1840409-6 (REV. 90)
91	1	1840409-6 (REV. 91)
92	1	1840409-6 (REV. 92)
93	1	1840409-6 (REV. 93)
94	1	1840409-6 (REV. 94)
95	1	1840409-6 (REV. 95)
96	1	1840409-6 (REV. 96)
97	1	1840409-6 (REV. 97)
98	1	1840409-6 (REV. 98)
99	1	1840409-6 (REV. 99)
100	1	1840409-6 (REV. 100)