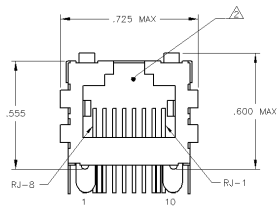
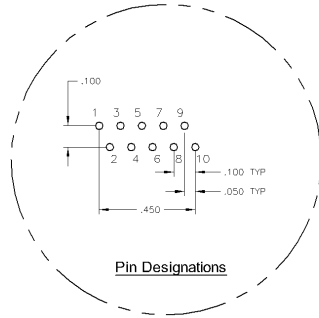
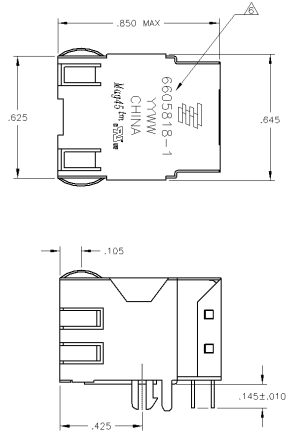
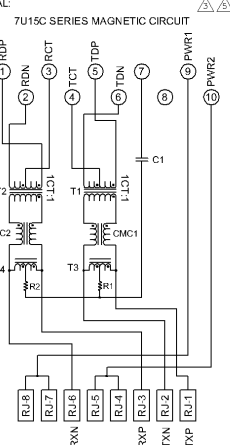


**MECHANICAL:**

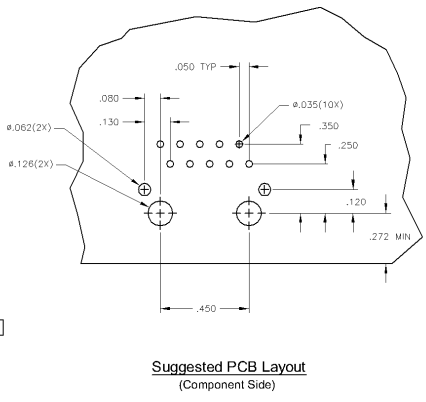


- △ MATERIALS:
  - HOUSING - THERMOPLASTIC PET POLYESTER FLAMMABILITY RATING UL 94V-0
  - SHIELD - .010" THICK, C26800 BRASS PREPLATED WITH 30UNCH MIN SEM-BRIGHT NICKEL, SOLDER TABS POST DIPPED WITH 100UNCH MIN SAC SOLDER
  - MOD JACK CONTACTS - 0.0157" x 0.018" PHOSPHOR BRONZE, 50UNCH MIN OVERALL NICKEL UNDERPLATE, WITH SELECT 50UNCH MIN HARD GOLD FINISH PLATE SOLDER TAILS WITH 100UNCH MIN MATTE TIN AND/OR SAC SOLDER DIP.
- △ RJ45 JACK CAVITY CONFORMS TO FCC RULES AND REGULATIONS PART 68, SUB PART F.
- △ MAGNETICS
  - IMPEDANCE 100 OHMS
  - TURNS RATIO (RHP CABLE) TX x 11, RX x 11
  - OPEN CIRCUIT INDUCTANCE (OCL) 350MH MIN @100KHz, 0.1VRMS 8mADC BIAS FROM 0°C TO 70°C, TX AND RX
  - PDE CURRENT 350mADC MAX
  - PERFORMANCE @ 25°C
    - INSERTION LOSS (IL) 1.1dB MAX FROM 0.5MHz TO 100MHz
    - RETURN LOSS (RL) 18dB MIN FROM 0.5MHz TO 100MHz
    - 18-20LOG(f/30)dB MIN FROM 30.1MHz TO 60MHz
    - 12dB MIN FROM 60.1MHz TO 80MHz
    - CROSSTALK ATTENUATION: 35dB MIN FROM 0.5MHz TO 40MHz
    - 33-20LOG(f/50)dB MIN FROM 40.1MHz TO 100MHz
    - COMMON MODE REJECTION RATIO (CMRR) 30dB MIN FROM 0.5MHz TO 100MHz
    - ISOLATION VOLTAGE (COMPLIES WITH IEEE802.3af 2003, PARA 33.4.1, ITEM a.
- 4. OPERATING TEMPERATURE FROM 0°C TO +70°C.
- △ INDICATED CONNECTIONS ARE FOR NIC CONFIGURATION. THE MAGNETICS ARE SYMMETRIC TO SUPPORT AUTO-MDIX.
- △ TYCO ELECTRONICS LOGO, PART NUMBER, DATE CODE, COUNTRY OF ORIGIN AND AGENCY APPROVAL MARKING IN APPROXIMATE LOCATION SHOWN.
- 7. THE PART IS RECOMMENDED FOR WAVE SOLDERING PROCESS. PREHEAT TEMPERATURE IS 120°C TO 160°C, 120 SECONDS TO 180 SECONDS. PEAK SOLDERING TEMPERATURE IS 260°C MAX, 10 SECONDS MAX.

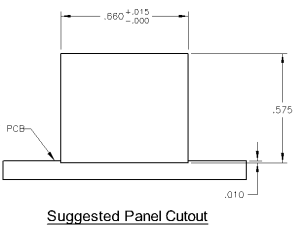
**ELECTRICAL:**



C1=1000 pF, 3kV CAPACITOR  
R1-R2 = 75 OHMS, 1/16 W RESISTOR



**Suggested PCB Layout (Component Side)**



**Suggested Panel Cutout**

THIS DRAWING IS A CONTROLLED DOCUMENT.		REV. AA 22	DATE 03-20-2014	TYPE CUSTOMER DRAWING	6605818-1
DESCRIPTION	QUANTITY	UNIT PRICE	TOTAL PRICE	DATE	STATUS
1X1 MAG45(TN), MODULAR JACK, 7U12 SCHEMATIC, 7U15C VOICE/POE MAGNETIC CIRCUIT, SHIELDED, DECOUPLING CAPACITOR, NO LEADS	100	2.100	210.00		REVISED BY
CUSTOMER DRAWING				DATE	BY
				DATE	BY