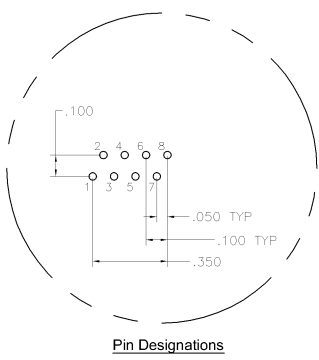
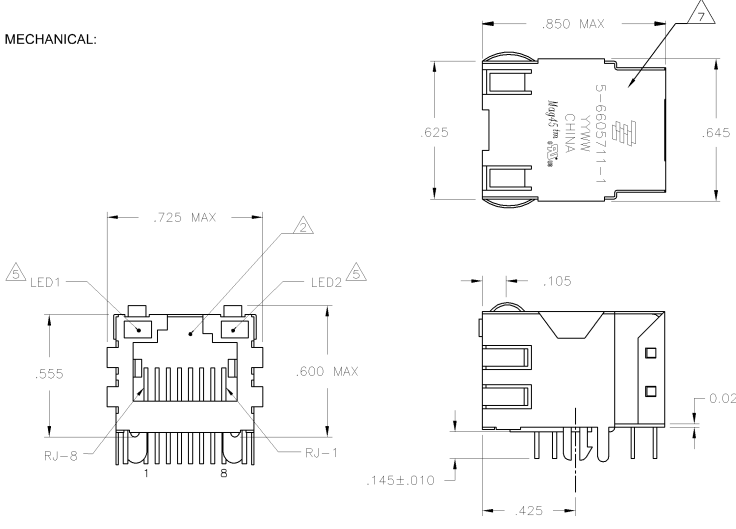


REV	DATE	DESCRIPTION
AA	22	REV PER ECO-08-021858

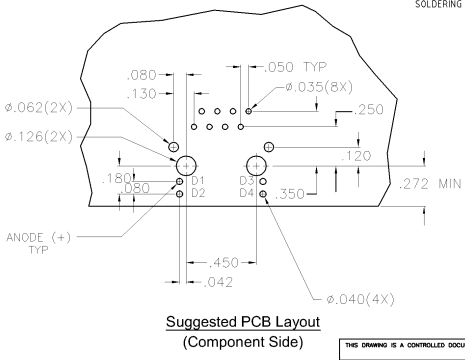
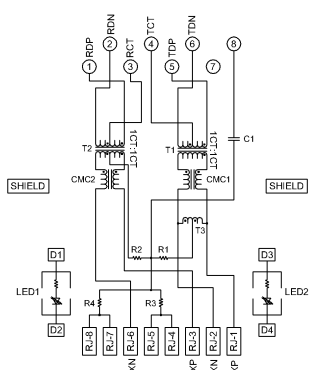
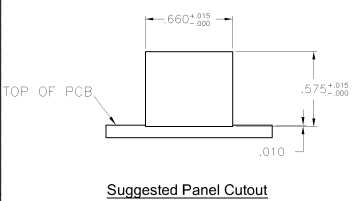
REV	DATE	DESCRIPTION
AA	22	REV PER ECO-08-021858

**MECHANICAL:**



- △ MATERIALS
  - HOUSING - THERMOPLASTIC PET POLYESTER FLAMMABILITY RATING UL 94V-0
  - SHIELD - .010" THICK, C26800 BRASS PREPLATED WITH 30μINCH MIN SEMI-BRIGHT NICKEL. SOLDER TABS POST DIPPED WITH 100μINCH MIN SAC SOLDER.
  - MOD JACK CONTACTS - 0.0157 x 0.018" PHOSPHOR BRONZE, 50μINCH MIN OVERALL NICKEL UNDERPLATE WITH SELECT 50μINCH MIN HARD GOLD FINISH PLATE.
  - SOLDER TAILS WITH 100μINCH MIN MATTE TIN AND/OR SAC SOLDER DIP (LIGHT EMITTING DIODELED) - DIFFUSED EPOXY LENS, .020" X .020" CARBON STEEL WIREFRAME LEADS PRE-PLATED WITH 80μINCH SILVER OVER 40μINCH NICKEL UNDERPLATE OVER 40μINCH COPPER UNDERPLATE, POST-PLATED WITH 100μINCH PIN MATTE TIN AND/OR SAC SOLDER DIP OR PURE TIN SOLDER DIP.
- △ RJ45 JACK CAVITY CONFORMS TO FCC RULES AND REGULATIONS PART 68, SUB PART F.
- △ MAGNETICS
  - IMPEDANCE: 100 OHMS
  - TURNS RATIO (CHP CABLE): TX = 11, RX = 11
  - OPEN CIRCUIT INDUCTANCE (OCL): 350μH MIN @100MHz, 0.1VRMS, 8mA DC BIAS FROM -40°C TO +85°C, TX AND RX
  - PERFORMANCE @ 25°C:
    - INSERTION LOSS (IL): 1.1dB MAX FROM 0.5MHz TO 100MHz
    - RETURN LOSS (RL): 18dB MIN FROM 0.5MHz TO 30MHz
    - 18-20LOG(f)/301dB MIN FROM 30 MHz TO 60MHz
    - 12dB MIN FROM 60 MHz TO 80MHz
    - CROSSTALK ATTENUATION: 35dB MIN FROM 0.5MHz TO 40MHz
    - 33-20+LOG(f)/50dB MIN FROM 40 MHz TO 100MHz
    - COMMON MODE REJECTION RATIO (CMRR): 30dB MIN FROM 0.5MHz TO 100MHz
    - ISOLATION VOLTAGE: COMPLIES WITH IEEE802.3 2002, PARA 23.5.11, ITEM b.
- 4. OPERATING TEMPERATURE: FROM -40° - +85°C.
- △ LED WITH 75Ω OHM RESISTORS, LED IS DRIVEN WITH 5V VOLTAGE AND THE MAX OPERATING CURRENT IS 20mA.
- LED COLOR - DOMINANT WAVELENGTH (λD): GREEN 568 nm TYP. AT VF=5V  
 FORWARD CURRENT (IF): GREEN 12 mA TYP. AT VF=5V  
 DOMINANT WAVELENGTH (λD): YELLOW 588 nm TYP. AT VF=5V  
 FORWARD CURRENT (IF): YELLOW 13 mA TYP. AT VF=5V
- △ INDICATED CONNECTIONS ARE FOR NIC CONFIGURATION. THE MAGNETICS ARE ASYMMETRICAL, AND THEREFORE ARE NOT AUTO-MDIX CAPABLE.
- △ TYCO ELECTRONICS LOGO, PART NUMBER, DATE CODE, COUNTRY OF ORIGIN AND AGENCY APPROVAL MARKING IN APPROXIMATE LOCATION SHOWN.
- 8. THESE PARTS ARE RECOMMENDED FOR WAVE SOLDERING PROCESS, PREHEAT TEMPERATURE IS 120°C TO 160°C, 120 SECONDS TO 180 SECONDS, PEAK WAVE SOLDERING TEMPERATURE IS 340°C MAX, 10 SECONDS MAX.

**714ET SERIES MAGNETIC SCHEMATIC**



C1=1000pF, 2kV DECOUPLING CAPACITOR  
 R1-R4 = 75 OHMS, 1/16 W RESISTORS

YES	GREEN	YELLOW	5-6605711-1
NO	GREEN	YELLOW	6605711-1
2kV DECOUPLING CAPACITOR	△ LED1	△ LED2	PART NUMBER
THIS DRAWING IS A CONTROLLED DOCUMENT			
DATE	REV	DESCRIPTION	BY
00779	0	INITIALS	DATE
00779	0	INITIALS	DATE