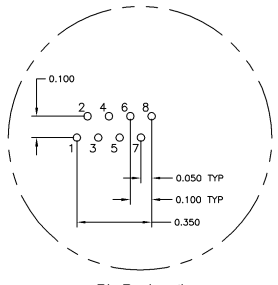
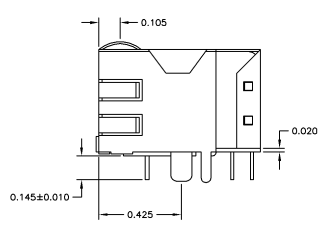
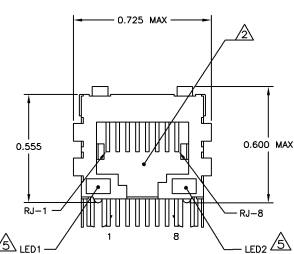
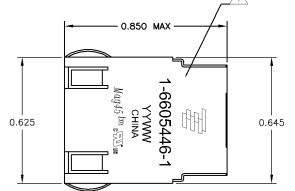


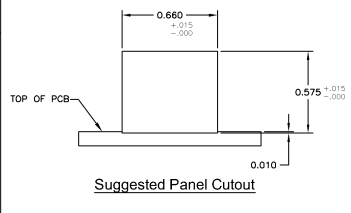
THIS DRAWING IS UNAPPROVED FOR PRODUCTION  
 IN THIS ELECTRONICS CORPORATION. ALL RIGHTS RESERVED.

REV	DATE	REVISIONS	BY	CHK	APP
AA	22				
C		REV PER ECO-09-000308			

**MECHANICAL:**

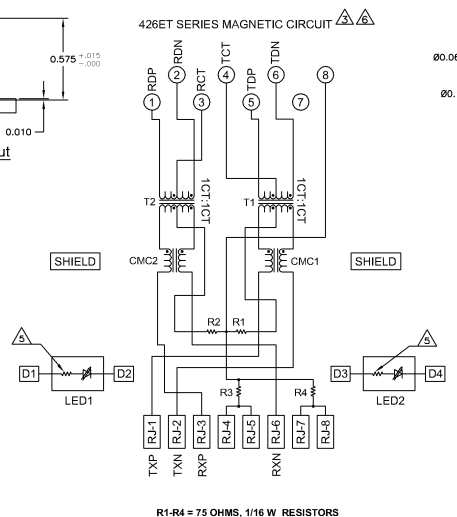


**Pin Designations**

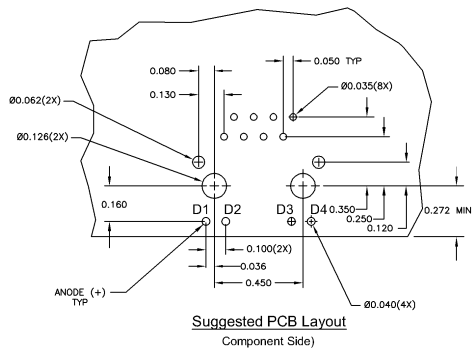


**Suggested Panel Cutout**

**426ET SERIES MAGNETIC CIRCUIT**



R1-R4 = 75 OHMS, 1/16 W RESISTORS



**Suggested PCB Layout  
Component Side)**

- △ HOUSING - THERMOPLASTIC PET POLYESTER FLAMMABILITY RATING UL 94V-0. SHIELD - .010" THICK (Z6800 BRASS PREPLATED WITH 30µINCH MIN SEMI-BRIGHT NICKEL SOLDER TABS POST DIPPED WITH 100µINCH MIN SAC SOLDER. MOD JACK CONTACTS - 0.0151 X 0.018" PHOSPHOR BRONZE, 50µINCH MIN OVERALL NICKEL UNDERPLATE WITH SELECT 50µINCH MIN HARD GOLD FINISH PLATE SOLDER TAILS WITH 100µINCH MIN MATTE TIN AND/OR SAC SOLDER DIP LIGHT EMITTING DIODE(LED) - DIFFUSED EPOXY LENS, 0.020" X 0.020" CARBON STEEL WIREFRAME LEADS PRE-PLATED WITH 80µINCH SILVER OVER 40µINCH NICKEL UNDERPLATE OVER 40µINCH COPPER UNDERPLATE. POST-PLATED WITH 100µINCH MIN MATTE TIN AND/OR SAC SOLDER DIP OR PURE TIN SOLDER DIP.
- △ RJ45 JACK CAVITY CONFORMS TO FCC RULES AND REGULATIONS PART 68, SUB PART F
- △ MAGNETICS
  - IMPEDANCE: 100 OHMS
  - TURNS RATIO (CHIP CABLE): TX = 11, RX = 11
  - OPEN CIRCUIT INDUCTANCE (OCL): 35µH MIN @100kHz, 0 TVRMS, 5nADC BIAS FROM -4°C TO +85°C, TX AND RX
  - PERFORMANCE @ 25°C
    - INSERTION LOSS (IL): 1.1dB MAX FROM 0.5MHz TO 100MHz
    - RETURN LOSS (RL): 18dB MIN FROM 0.5MHz TO 30MHz
    - 18-20LOG(f/30)dB MIN FROM 30 MHz TO 60MHz
    - 12dB MIN FROM 60 MHz TO 80MHz
    - CROSSTALK ATTENUATION: 35dB MIN FROM 0.5MHz TO 40MHz
    - 33-20\*LOG(f/50)dB MIN FROM 40 MHz TO 100MHz
    - COMMON MODE REJECTION RATIO (CMRR): 30dB MIN FROM 0.5MHz TO 100MHz
    - ISOLATION VOLTAGE: COMPLIES WITH IEEE802.3 2002, PARA 23.5.1.1, ITEM b
- 4. OPERATING TEMPERATURE FROM -40°C TO +85°C
- △ LEDs WITH BUILT-IN RESISTOR  
 LEDs ARE DRIVEN WITH 5V VOLTAGE AND THE MAX OPERATING CURRENT IS 20mA. LED COLOR: DOMINANT WAVELENGTH (λD): GREEN 568 nm TYP @ VF=5V. FORWARD CURRENT (IF): GREEN 12mA TYP @ VF=5V
- △ INDICATED CONNECTIONS ARE FOR IEC CONFIGURATION. THE MAGNETICS ARE SYMMETRICAL TO SUPPORT AUTO-MDI/MIDX.
- △ TYCO ELECTRONICS LOGO, PART NUMBER, DATE CODE, COUNTRY OF ORIGIN AND AGENCY APPROVAL MARKING IN APPROXIMATE LOCATION SHOWN.
- 8. THE PART IS RECOMMENDED FOR WAVE SOLDERING PROCESS. PREHEAT TEMPERATURE IS 120°C TO 160°C, 120 SECONDS TO 180 SECONDS, PEAK WAVE SOLDERING TEMPERATURE IS 260°C MAX, 10 SECONDS MAX.

GREEN	GREEN	1-6605446-1
LED1	LED2	PART NUMBER

THIS DRAWING IS A CONTROLLED DOCUMENT		REVISED		DATE		BY		CHK		APP	
DESIGNED	BY	DATE	BY	DATE	BY	DATE	BY	DATE	BY	DATE	BY
DRAWN	BY	DATE	BY	DATE	BY	DATE	BY	DATE	BY	DATE	BY
CHECKED	BY	DATE	BY	DATE	BY	DATE	BY	DATE	BY	DATE	BY
APPROVED	BY	DATE	BY	DATE	BY	DATE	BY	DATE	BY	DATE	BY
CUSTOMER DRAWING											