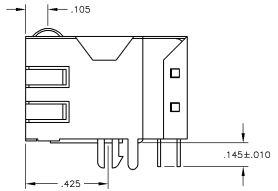
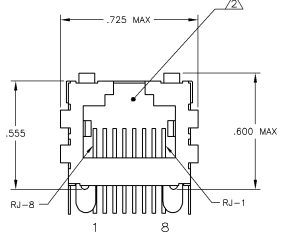
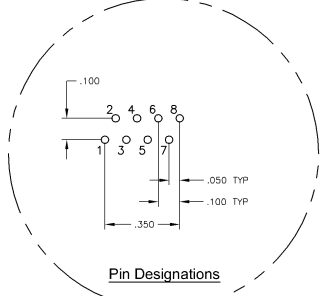
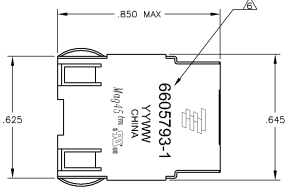
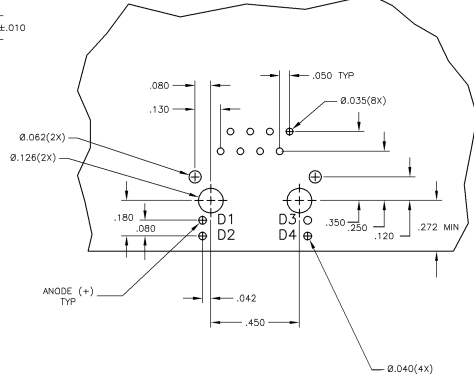
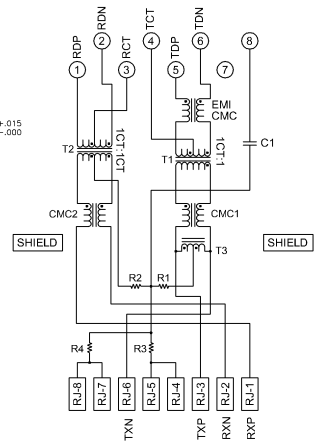


**MECHANICAL:**

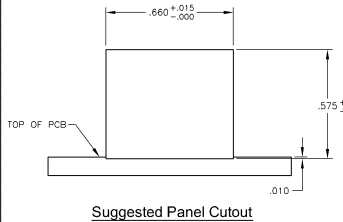


- MATERIALS**
- HOUSING - THERMOPLASTIC PET POLYESTER FLAMMABILITY RATING UL 94V-0
  - SHIELD - .010" THICK, C26800 BRASS PREPLATED WITH 30µINCH MIN SEMI-BRIGHT NICKEL. SOLDER TABS POST DIPPED WITH 100µINCH MIN SAC SOLDER
  - MOD JACK CONTACTS - 0.0157" x 0.018" PHOSPHOR BRONZE, 50µINCH MIN OVERALL NICKEL UNDERPLATE, WITH SELECT 50µINCH MIN HARD GOLD FINISH PLATE. SOLDER TAILS WITH 100µINCH MIN MATTE TIN AND/OR SAC SOLDER DIP.
- RJ45 JACK CAVITY CONFORMS TO FCC RULES AND REGULATIONS PART 68, SUB PART F.**
- MAGNETICS**
- IMPEDANCE: 100 OHMS
  - TURNS RATIO (EHP CABLE): TX = 11, RX = 11
  - OPEN CIRCUIT INDUCTANCE (OCL): 350µH MIN @100MHz, 0.1VRMS, 8mADC BIAS FROM 0°C TO 70°C, TX AND RX
  - PERFORMANCE @ 25°C
  - INSERTION LOSS (IL): 11dB MAX FROM 0.5MHz TO 100MHz
  - RETURN LOSS (RL): 18dB MIN FROM 0.5MHz TO 30MHz
  - 18-20LOG(I)/30dB MIN FROM 30.1MHz TO 60MHz
  - 12dB MIN FROM 60.1MHz TO 80MHz
  - CROSSTALK ATTENUATION: 35dB MIN FROM 0.5MHz TO 10MHz
  - 33-20LOG(I)/50dB MIN FROM 4.0MHz TO 100MHz
  - COMMON MODE REJECTION RATIO (CMRR): 30dB MIN FROM 0.5MHz TO 100MHz
  - ISOLATION VOLTAGE: COMPLIES WITH IEEE802.3 2002, PARA 233.5.1, ITEM b.
4. OPERATING TEMPERATURE: FROM 0° TO -70°C.
- INDICATED CONNECTIONS ARE FOR HUB CONFIGURATION. THE MAGNETICS ARE ASYMMETRICAL, AND DO NOT SUPPORT AUTO-MDI/MDIX.**
- TYCO ELECTRONICS LOGO, PART NUMBER, DATE CODE, COUNTRY OF ORIGIN AND AGENCY APPROVAL MARKING IN APPROXIMATE LOCATION SHOWN.**
7. THE PART IS RECOMMENDED FOR WAVE SOLDERING PROCESS. PREHEAT TEMPERATURE IS 120°C TO 160°C, 120 SECONDS TO 180 SECONDS, PEAK WAVE SOLDERING TEMPERATURE IS 260°C MAX, 10 SECONDS MAX.

**ELECTRICAL:**  
757P9 SERIES MAGNETIC CIRCUIT



**Suggested PCB Layout (Component Side)**



**Suggested Panel Cutout**

C1 = 1000 pF, 2kV CAPACITOR  
R1-R4 = 75 OHMS, 1/16 W RESISTORS

THIS DRAWING IS A CONTROLLED DOCUMENT		REV A 22		6605793-1	
DESIGNED BY	DATE	REVISED BY	DATE	REVISED BY	DATE
APPROVED BY		APPROVED BY		APPROVED BY	
DESCRIPTION		PART NUMBER		PART NUMBER	
1X1 MAG457M, MODULAR JACK, SHIELDED, DECOUPLING CAPACITOR, NO LEADS		757P9		6605793	
SCALE		1:1		1:1	
CUSTOMER DRAWING					