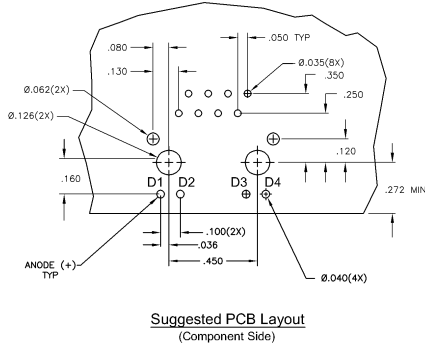
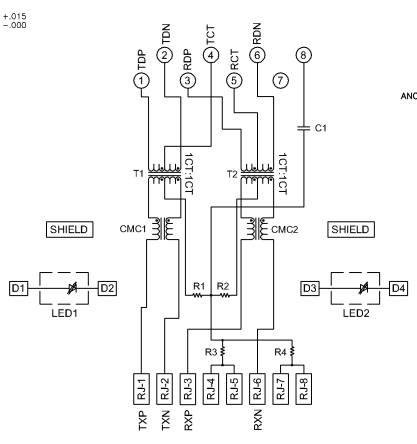


ELECTRICAL:
426P13 MAGNETIC CIRCUIT



- MATERIALS:**
- HOUSING - THERMOPLASTIC PET POLYESTER FLAMMABILITY RATING UL 94V-0.
 - SHIELD - .010" THICK, C26800 BRASS PREPLATED WITH 30µINCH MIN SEMI-BRIGHT NICKEL. SOLDER TABS POST DIPPED WITH 100µINCH MIN SAC SOLDER.
 - MOD JACK CONTACTS - 0.0157 X 0.018" PHOSPHOR BRONZE, 50µINCH MIN OVERALL NICKEL UNDERPLATE WITH SELECT 50µINCH MIN HARD GOLD FINISH PLATE.
 - SOLDERTAILS WITH 100µINCH MIN MATT TIN AND/OR SAC SOLDER DIP.
 - LIGHT EMITTING DIODE(LED) - DIFFUSED EPOXY LENS, .020" X .020" CARBON STEEL WIREFRAME LEADS PRE-PLATED WITH 80µINCH SILVER OVER 4µINCH NICKEL UNDERPLATE OVER 4µINCH COPPER UNDERPLATE. POST-PLATED WITH 100µINCH MIN MATT TIN AND/OR SAC SOLDER DIP OR PURE TIN SOLDER DIP.
- RJ45 JACK CAVITY CONFORMS TO FCC RULES AND REGULATIONS PART 48, SUB PART F.**
- MAGNETICS**
- APPLICATION: 10/100 BASE-T
 - IMPEDANCE: 100 OHMS
 - TURNS RATIO (CHIP CABLE): TX = 11, RX = 11
 - OPEN CIRCUIT INDUCTANCE (OCL): 350nH MIN @ 100kHz, 0.1VRMS.
 - BROADBAND BIAS FROM 0°C TO 70°C, TX AND RX
 - PERFORMANCE @ 25°C:
 - INSERTION LOSS (IL): 1.1dB MAX FROM 0.5MHz TO 100MHz
 - RETURN LOSS (RL): 18dB MIN FROM 0.5MHz TO 30MHz
 - 18-20LOGI/350dB MIN FROM 30MHz TO 60MHz
 - 12dB MIN FROM 60MHz TO 80MHz
 - CROSSTALK ATTENUATION: 35dB MIN FROM 0.5MHz TO 40MHz
 - 33-20LOGI/500dB MIN FROM 4.0MHz TO 100MHz
 - COMMON MODE REJECTION RATIO (CMRR): 30dB MIN FROM 0.5MHz TO 100MHz
 - ISOLATION VOLTAGE: 250VDC (MAX) FOR 60 SECONDS WITH A RISE TIME OF 500V/SEC AND WITH ALL PORTS CONNECTED.
- OPERATING TEMPERATURE: FROM 0°C - +70°C**
- LEDs ARE DRIVEN WITH CONSTANT CURRENT AT APPROX 20mA.**
- LED COLOR: DOMINANT WAVELENGTH (λD): GREEN 568 nm TYP @ IF=20mA**
- FORWARD VOLTAGE (VF): GREEN 2.2V TYP @ IF=20mA**
- DOMINANT WAVELENGTH (λD): YELLOW 588 nm TYP @ IF=20mA**
- FORWARD VOLTAGE (VF): YELLOW 2.1V TYP @ IF=20mA**
- INDICATED CONNECTIONS ARE FOR NIC CONFIGURATION. THE MAGNETICS ARE SYMMETRICAL, AND THEREFORE SUPPORT AUTO-MDI/MDIX.**
- TYCO ELECTRONICS LOGO, PART NUMBER, DATE CODE, COUNTRY OF ORIGIN AND AGENCY APPROVAL MARKING IN APPROXIMATE LOCATION SHOWN.**
- THESE PARTS ARE RECOMMENDED FOR WAVE SOLDERING PROCESS.**
- PREHEAT TEMPERATURE IS 120°C TO 160°C, 120 SECONDS TO 180 SECONDS.**
- PEAK SOLDERING TEMPERATURE IS 260°C MAX, 10 SECONDS MAX.**

C1=1000µF, 2kV CAPACITOR
R1-R4 = 75 OHMS, 1/16 W RESISTORS

GREEN	GREEN	5-6605473-7
YELLOW	GREEN	6605473-9
GREEN	YELLOW	6605473-8

THIS DRAWING IS A CONTROLLED DOCUMENT		REV	DATE	DESCRIPTION	BY	CHKD	APP'D
DESIGNED	REVISED	1	22	Initial Release			
DRAWN	REVISED	1	22	Initial Release			
CHECKED	REVISED	1	22	Initial Release			
APPROVED	REVISED	1	22	Initial Release			
DATE	TIME	DATE	TIME	DATE	TIME	DATE	TIME

Customer Drawing: 6605473