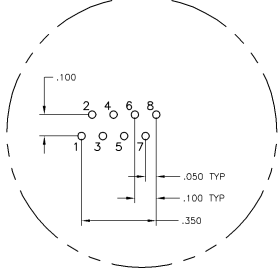
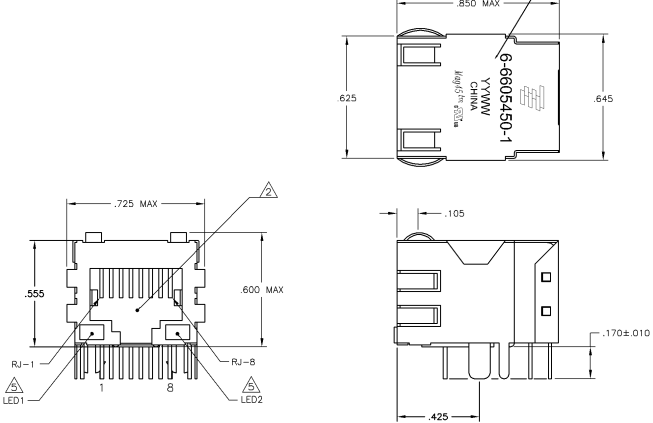


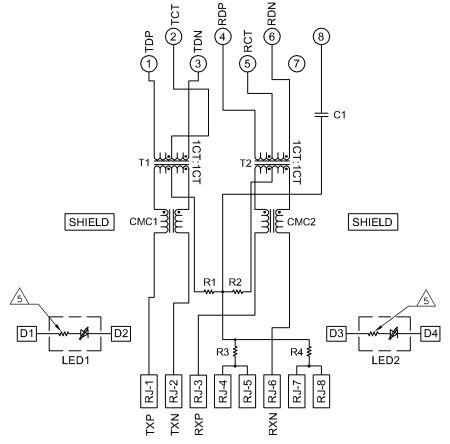
MECHANICAL:



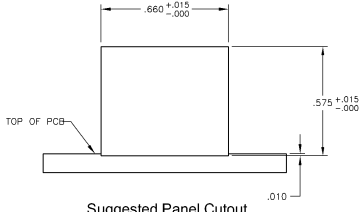
Pin Designations

ELECTRICAL:

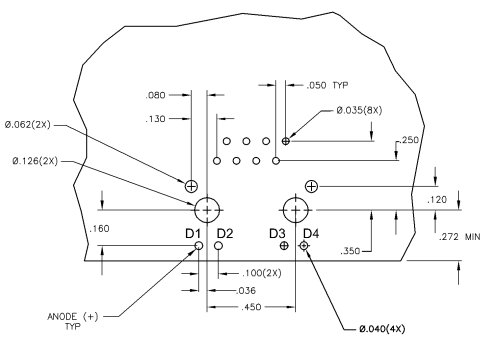
426P1 SERIES MAGNETIC CIRCUIT



C1=1000 pF, 2kV CAPACITOR
R1-R4 = 75 OHMS, 1/16W RESISTORS



Suggested Panel Cutout



Suggested PCB Layout (Component Side)

- MATERIALS:**
MATERIALS - THERMOPLASTIC PET POLYESTER FLAMMABILITY RATING UL 94V-0
SHIELD - .010" THICK, C2680 BRASS PREPLATED WITH 30µMCH MIN SEMI-BRIGHT NICKEL. SOLDER TABS POST DIPPED WITH 100µMCH MIN SAC SOLDER
MOD JACK CONTACTS - 0.203 X 0.015 PHOSPHOR BRONZE, 50µMCH MIN OVERALL NICKEL UNDERPLATE WITH SELECT 50µMCH MIN HARD GOLD FINISH PLATE. SOLDER TABS WITH 100µMCH MIN MATTE TIN AND/OR SAC SOLDER DIP
LIGHT EMITTING DIODE(LED) - DIFFUSED EPOXY LENS, 0.20" X 0.20" CARBON STEEL WIREFRAME LEADS PRE-PLATED WITH 100µMCH MIN SEMI-BRIGHT NICKEL UNDERPLATE OVER 50µMCH COPPER UNDERPLATE. POST-PLATED WITH 100µMCH MIN MATTE TIN AND/OR SAC SOLDER DIP OR PURE TIN SOLDER DIP.
- MAGNETICS:**
- PREZEDANCE: 90 OHMS
- TURNING RATIO (UNPLATED): TX - 1:1 RX - 1:1
- OPEN CIRCUIT INDUCTANCE (OCL): 350µH MIN @ 100MHz; 8 µVrms.
- ISOLATION: 20dB FROM TX TO TX, TX AND RX
- PERFORMANCE @ 25°C:
RETURN LOSS (RL): 1.0dB MAX FROM 0.5MHz TO 100MHz
RETURN LOSS (RL): 1.0dB MIN FROM 0.5MHz TO 100MHz
IS - 20.0dB/30dB MIN FROM 30 MHz TO 60MHz
IS - 20.0dB/30dB MIN FROM 30 MHz TO 100MHz
CROSSTALK ATTENUATION: 35dB MIN FROM 0.5MHz TO 40MHz
TX-TX ISOLATION: 30dB MIN FROM 0.5MHz TO 100MHz
(COMMON MODE REJECTION RATIO (CMRR): 20dB MIN FROM 0.5MHz TO 100MHz)
- ISOLATION VOLTAGE: COMPLES WITH IEEE802.3-2002, PARA 23.5.1.1, ITEM 5
4. OPERATING TEMPERATURE: FROM 0°C TO +70°C
5. THE 250 OHM LED RESISTORS ARE OPTIONAL. PLEASE SEE CHART FOR PRESENCE OR ABSENCE OF LED RESISTORS. IF THE LED WITHOUT 250 OHM RESISTORS, LED IS DRIVEN WITH CONSTANT CURRENT AT APPROX 20mA.
LED COLOR: DOMINANT WAVELENGTH (nm): GREEN 568 nm TYP. (IF 20mA)
FORWARD VOLTAGE (Vf): GREEN 2.0 V TYP. (IF 20mA)
DOMINANT WAVELENGTH (nm): YELLOW 588 nm TYP. (IF 20mA)
FORWARD VOLTAGE (Vf): YELLOW 2.7 V TYP. (IF 20mA)
IF THE LED WITH 250 OHM RESISTORS LED IS DRIVEN WITH 5V VOLTAGE AND THE MAX OPERATING CURRENT IS 20mA.
LED COLOR: DOMINANT WAVELENGTH (nm): GREEN 568 nm TYP. (IF 20mA)
FORWARD CURRENT (If): GREEN 12 mA TYP. (IF 5V)
6. INDICATED CONNECTIONS ARE FOR NC CONFIGURATION. THE MAGNETICS ARE SYMMETRICAL AND SUPPORT AUTO-REVERSE.
7. TYPICAL ELECTRONICS LOGO, PART NUMBER, DATE CODE, COUNTRY OF ORIGIN AND AGENCY APPROVAL MARKING IN APPROPRIATE LOCATION SHOWN.
8. THESE PARTS ARE RECOMMENDED FOR WAVE SOLDERING PROCESS. PREHEAT TEMPERATURE IS 120°C TO 140°C, 120 SECONDS TO 180 SECONDS. PEAK WAVE SOLDERING TEMPERATURE IS 340°C MAX, 10 SECONDS MAX.

GREEN	YES	GREEN	YES	6-6605450-1
YELLOW	NO	GREEN	NO	5-6605450-9
GREEN	NO	YELLOW	NO	5-6605450-8
GREEN	NO	GREEN	NO	5-6605450-7

LED1	250 OHM RESISTOR	LED2	250 OHM RESISTOR	PART NUMBER
------	------------------	------	------------------	-------------

THIS DRAWING IS A CONTROLLED DOCUMENT. THE DRAWING IS THE PROPERTY OF Tyco Electronics Corporation. UNLESS OTHERWISE SPECIFIED, ALL DIMENSIONS ARE IN MILLIMETERS. UNLESS OTHERWISE SPECIFIED, ALL DIMENSIONS ARE TO CENTER UNLESS OTHERWISE SPECIFIED. UNLESS OTHERWISE SPECIFIED, ALL DIMENSIONS ARE TO CENTER UNLESS OTHERWISE SPECIFIED. UNLESS OTHERWISE SPECIFIED, ALL DIMENSIONS ARE TO CENTER UNLESS OTHERWISE SPECIFIED.

DESIGNER	DATE	REV	BY	CHKD	APPV

DESCRIPTION	QUANTITY	UNIT	REVISION
1X1 MAG45(N), 426P1 10/100 ETHERNET SCHEMATIC, 426P1 MAGNETIC CIRCUIT, SHIELDED, DECOUPLING CAPACITOR, WITH LEADS.	1000	2100	

DATE	SCALE	SHEET	TOTAL
01/07/2008	4:1	1	1

CUSTOMER DRAWING	SCALE	SHEET	TOTAL
A1 00779C-6605450	4:1	1	1