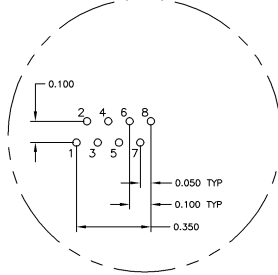
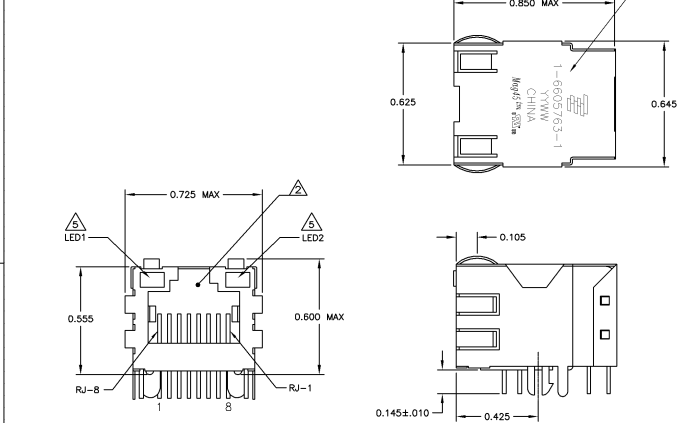
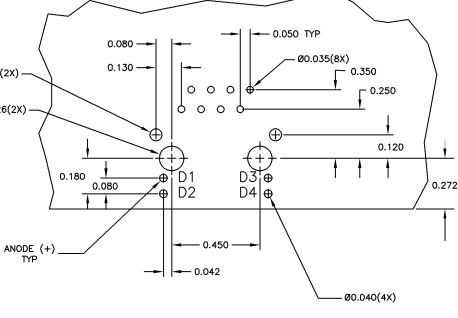
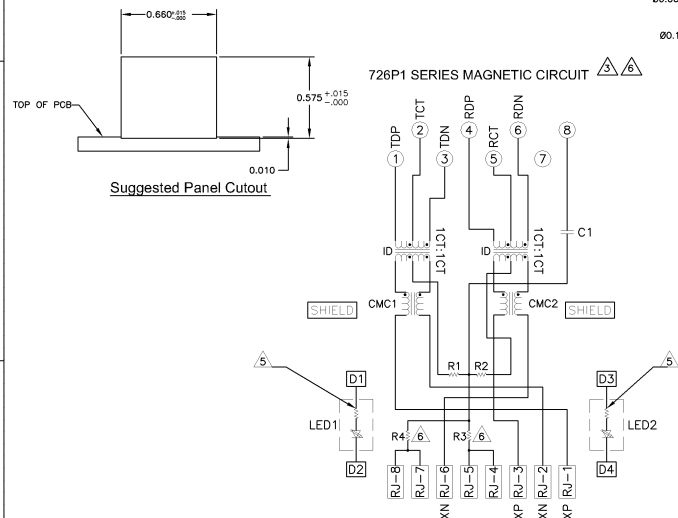


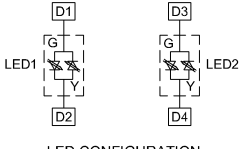
**MECHANICAL:**



Pin Designations



Suggested PCB Layout (Component Side)



LED CONFIGURATION FOR 5-6605763-6 ONLY

C1=1000pF, 2kV CAPACITOR  
 R1-R4 = 75 OHMS, 1/16 W RESISTORS

- MATERIALS**
  - HOUSING - THERMOPLASTIC PET POLYESTER FLAMMABILITY RATING UL 94V-0
  - SHIELD - 010" THICK C24800 BRASS PREPLATED WITH 30μINCH MN SEMI-BRIGHT NICKEL, SOLDER TABS POST DIPPED WITH 10μINCH MN SAC SOLDER
  - MOD JACK CONTACTS - 0.0157" x 0.018" PHOSPHOR BRONZE, 50μINCH MN OVERALL NICKEL UNDERPLATE, WITH SELECT 50μINCH MN HARD GOLD FINISH PLATE
  - SOLETTAILS WITH 10μINCH MN MATTE TIN AND/OR SAC SOLDER DIP
  - LIGHT EMITTING DIODE(LED) - DIFFUSED EPOXY LENS, 020" x 020" CARBON STEEL WIREFRAME LEADS PRE-PLATED WITH 80μINCH SILVER OVER 4μINCH NICKEL UNDERPLATE OVER 4μINCH COPPER UNDERPLATE, POST-PLATED WITH 10μINCH MN MATTE TIN AND/OR SAC SOLDER DIP OR PURE TIN SOLDER DIP
- RJ45 JACK CAVITY CONFORMS TO FCC RULES AND REGULATIONS PART 68, SUB PART F**
- MAGNETICS**
  - IMPEDANCE 100 OHMS
  - TURNS RATIO (CHP CABLE) TX ± 11, RX ± 11
  - OPEN CIRCUIT INDUCTANCE (OCL) 350μH MIN @ 100kHz, 0 TVRMS, 8mADC BIAS FROM 0°C TO 70°C, TX AND RX
  - PERFORMANCE @ 25°C
  - INSERTION LOSS (IL): 1.1dB MAX FROM 0.5MHz TO 100MHz
  - RETURN LOSS (RL): 30dB MIN FROM 0.5MHz TO 30MHz
  - 18-20dB @ 30dB MIN FROM 30 MHz TO 60MHz
  - 12dB MIN FROM 60 MHz TO 80MHz
  - CROSSTALK ATTENUATION: 35dB MIN FROM 0.5MHz TO 40MHz
  - 33-20 \* dBi @ 50dB MIN FROM 40 MHz TO 100MHz
  - COMMON MODE REJECTION RATIO (CMRR): 30dB MIN FROM 0.5MHz TO 100MHz
  - ISOLATION VOLTAGE: COMPLIES WITH IEEE802.3 2002, PARA 23.5.1.1, ITEM b
- OPERATING TEMPERATURE FROM 0°C - -70°C**

- THE 250 OHM LED RESISTORS ARE OPTIONAL, PLEASE SEE CHART FOR PRESENCE OR ABSENCE OF LED RESISTORS. IF THE LED WITHOUT 250 OHM RESISTORS, LED IS DRIVEN WITH CONSTANT CURRENT AT APPROX 20mA**
- LED COLOR: DOMINANT WAVELENGTH (λD): GREEN 568 nm TYP @ IF=20mA**
- FORWARD VOLTAGE (VF): GREEN 2.2V TYP @ IF=20mA**
- DOMINANT WAVELENGTH (λD): YELLOW 588 nm TYP @ IF=20mA**
- FORWARD VOLTAGE (VF): YELLOW 2.1V TYP @ IF=20mA**
- IF THE LED WITH 250 OHM RESISTORS, LED IS DRIVEN WITH 5V VOLTAGE AND THE MAX OPERATING CURRENT IS 20mA**
- LED COLOR: DOMINANT WAVELENGTH (λD): GREEN 568 nm TYP @ VF=5V**
- FORWARD CURRENT (IF): GREEN 12 mA TYP @ VF=5V**
- DOMINANT WAVELENGTH (λD): YELLOW 588 nm TYP @ VF=5V**
- FORWARD CURRENT (IF): YELLOW 13 mA TYP @ VF=5V**

- INDICATED CONNECTIONS ARE FOR NIC CONFIGURATION. THE MAGNETICS ARE SYMMETRICAL, AND THEREFORE ARE AUTO-MIX/MIX CAPABLE**
- TYCO ELECTRONICS LOGO, PART NUMBER, DATE CODE, COUNTRY OF ORIGIN AND AGENCY APPROVAL MARKING IN APPROXIMATE LOCATION SHOWN**
- THESE PARTS ARE RECOMMENDED FOR WAVE SOLDERING PROCESS. PREHEAT TEMPERATURE IS 120°C TO 160°C, 120 SECONDS TO 180 SECONDS, PEAK SOLDERING TEMPERATURE IS 260 °C MAX, 10 SECONDS MAX**

GREEN	NO	GREEN	NO	5-6605763-7
GREEN/YELLOW	NO	GREEN/YELLOW	NO	5-6605763-6
GREEN	YES	GREEN	YES	1-6605763-1

LED1	250 OHMS RESISTOR	LED2	250 OHMS RESISTOR	PART NUMBER
THIS DRAWING IS A CONTROLLED DOCUMENT				DATE
REVISIONS				DATE
APPROVED				DATE
CHECKED				DATE
DRAWN				DATE
DESIGNED				DATE
TESTED				DATE
CUSTOMER DRAWING				DATE