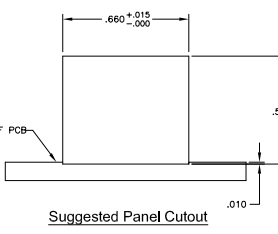
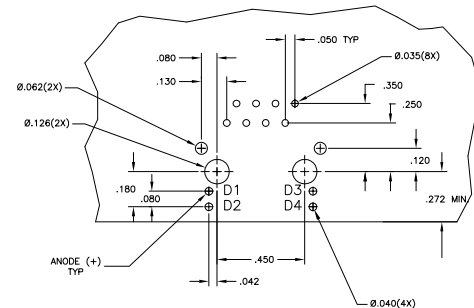
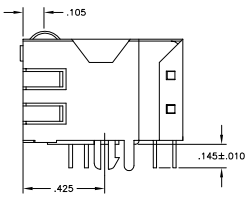
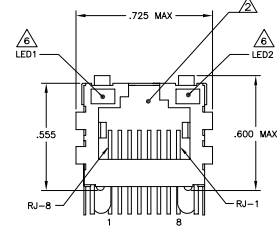
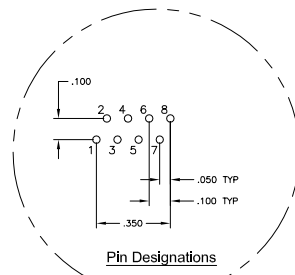
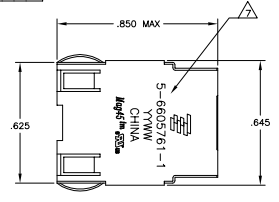
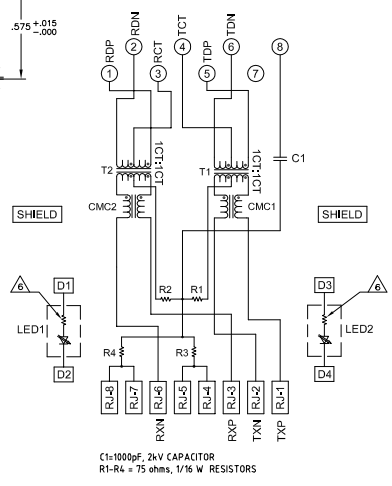


REV	DATE	REVISIONS	BY	CHK	APP
A		REVISED			
B		REV PER ECO-08-020044			
C		ECO-10-016032			

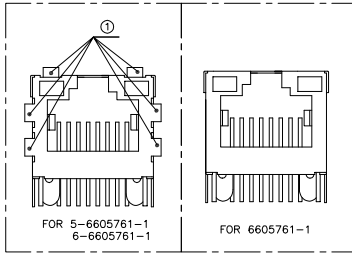
MECHANICAL:



ELECTRICAL:
726ET SERIES MAGNETIC CIRCUIT



C1: 1000pF, 2kV CAPACITOR
R1-R4 = 75 ohms, 1/16 W RESISTORS



- △ **MATERIALS:**
 - HOUSING - THERMOPLASTIC PET POLYESTER FLAMMABILITY RATING UL 94V-0
 - SHIELD - .010" THICK, C26800 BRASS PREPLATED WITH 30μINCH MIN SEMI-BRIGHT NICKEL. SOLDER TABS POST DIPPED WITH 100μINCH MIN SAC SOLDER
 - MOD JACK CONTACTS - 0.0157" x 0.018" PHOSPHOR BRONZE, 50μINCH MIN OVERALL NICKEL UNDERPLATE, WITH SELECT 50μINCH MIN HARD GOLD FINISH PLATE
 - SOLDER TABS WITH 100μINCH MIN MATTE TIN AND/OR SAC SOLDER DIP
 - LIGHT EMITTING DIODE(LED) - DIFFUSED EPOXY LENS, .020" x .020" CARBON STEEL WIREFRAME LEADS PRE-PLATED WITH 80μINCH SILVER OVER 40μINCH NICKEL UNDERPLATE OVER 40μINCH COPPER UNDERPLATE, POST-PLATED WITH 100μINCH MIN MATTE TIN AND/OR SAC SOLDER DIP OR PURE TIN SOLDER DIP.
- △ RJ45 JACK CAVITY CONFORMS TO FCC RULES AND REGULATIONS PART 68, SUB PART F.
- △ **MAGNETICS**
 - IMPEDANCE: 100 OHMS
 - TURNS RATIO (CHIP-CABLE): TX = 11, RX = 1:1
 - OPEN CIRCUIT INDUCTANCE (OCL): 350μH MIN @100MHz, 0.1VRMS, BROAD BIAS FROM -40°C TO +85°C, TX AND RX
 - PERFORMANCE @ 25°C:
 - INSERTION LOSS (IL): 11dB MAX FROM 0.5MHz TO 100MHz
 - RETURN LOSS (RL): 18dB MIN FROM 0.5MHz TO 30MHz
 - 18-20dBi @ 150dB MIN FROM 3V FROM 5V TO 60MHz
 - 12dB MIN FROM 60 MHz TO 80MHz
 - CROSSTALK ATTENUATION: 35dB MIN FROM 0.5MHz TO 40MHz
 - 33-20dBi @ 150dB MIN FROM 4.0 MHz TO 100MHz
 - COMMON MODE REJECTION RATIO (CMRR): 30dB MIN FROM 0.5MHz TO 100MHz
 - ISOLATION VOLTAGE. COMPLIES WITH IEEE802.3 2002, PARA 23.5.1.1, ITEM B.
- 4. OPERATING TEMPERATURE: FROM -40°C TO +85°C INDUSTRIAL TEMPERATURE RATED.
- △ INDICATED MAGNETIC CONNECTIONS ARE SYMMETRIC AND SUPPORTS AUTO-MDI/MIDX.
- △ LED WITH 250 OHM RESISTORS. LED IS DRIVEN WITH 5V VOLTAGE AND THE MAX OPERATING CURRENT IS 20mA.
LED COLOR : DOMINANT WAVELENGTH (λD): GREEN 568 nm TYP @ VF=5V
FORWARD CURRENT (IF): GREEN 12 mA TYP @ VF=5V
DOMINANT WAVELENGTH (λD): YELLOW 588 nm TYP @ VF=5V
FORWARD CURRENT (IF): YELLOW 13 mA TYP @ VF=5V
- △ TYCO ELECTRONICS LOGO, PART NUMBER, DATE CODE, COUNTRY OF ORIGIN AND AGENCY APPROVAL MARKING IN APPROXIMATE LOCATION SHOWN.
- 8. THESE PARTS ARE RECOMMENDED FOR WAVE SOLDERING PROCESS.
PREHEAT TEMPERATURE IS 120°C TO 160°C, 120 SECONDS TO 180 SECONDS.
PEAK SOLDERING TEMPERATURE IS 260 °C MAX, 10 SECONDS MAX.

NO	GREEN	YELLOW	6605761-1
YES	GREEN	GREEN	6-6605761-1
YES	GREEN	YELLOW	5-6605761-1

NO	GREEN	YELLOW	6605761-1
YES	GREEN	GREEN	6-6605761-1
YES	GREEN	YELLOW	5-6605761-1