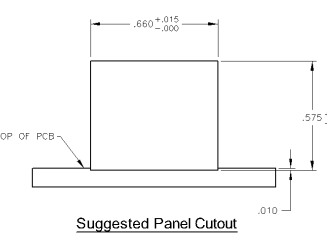
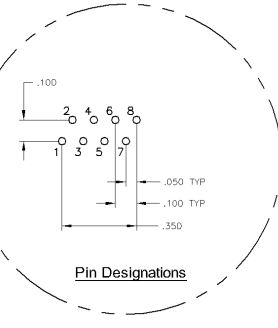
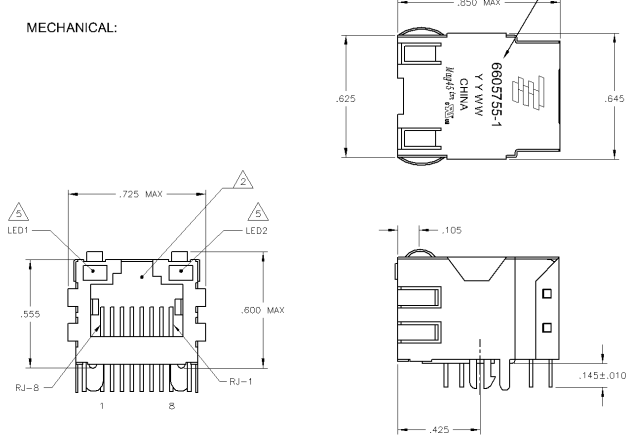
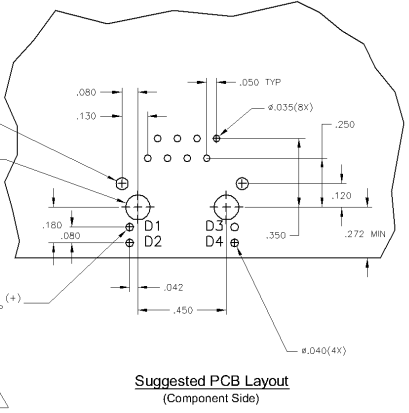
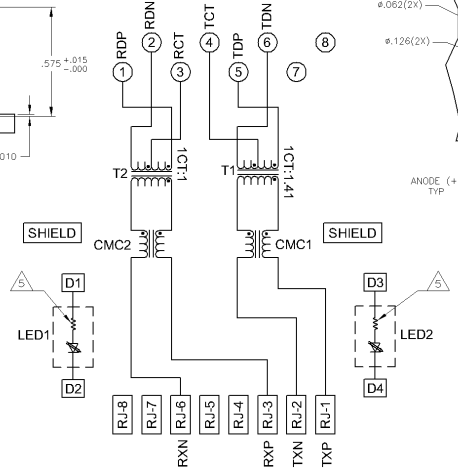


REV. DATE		REVISIONS	
AA	22	REV. PER	ECO-Q8-026401
B		REV PER	ECO-Q8-026401

**MECHANICAL:**



**ELECTRICAL:  
 725 SERIES MAGNETIC CIRCUIT**



- MATERIALS:**  
 - HOUSING - THERMOPLASTIC PET POLYESTER FLAMMABILITY RATING UL 94V-0  
 - SHIELD - .010" THICK, C26800 BRASS PREPLATED WITH 50μINCH MIN SEMI-BRIGHT NICKEL. SOLDER TABS POST DIPPED WITH 100μINCH MIN SAC SOLDER.  
 - MOD JACK CONTACTS - 0.015" x 0.018" PHOSPHOR BRONZE, 50μINCH MIN OVERALL NICKEL UNDERPLATE, WITH SELECT 50μINCH MIN HARD GOLD FINISH PLATE.  
 - SOLDER TAILS WITH 100μINCH MIN MATTE TIN AND/OR SAC SOLDER DIP.  
 - LIGHT EMITTING DIODE(LED) - DIFFUSED EPOXY LENS, .020" x .020" CARBON STEEL WIREFRAME LEADS PRE-PLATED WITH 80μINCH SILVER OVER 40μINCH NICKEL UNDERPLATE OVER 40μINCH COPPER UNDERPLATE, POST-PLATED WITH 100μINCH MIN MATTE TIN AND/OR SAC SOLDER DIP OR PURE TIN SOLDER DIP.
- RJ45 JACK CAVITY CONFORMS TO FCC RULES AND REGULATIONS PART 68, SUB PART F.**
- MAGNETICS:**  
 - APPLICATION: 10 BASE-T  
 - IMPEDANCE: 100 OHMS  
 - TURNS RATIO (CHP CABLE): TX = 11:1 RX = 1:1  
 - TRANSMIT OPEN CIRCUIT INDUCTANCE (OCL): 14.0μH MIN @ 100kHz; 0 IVRMS  
 - LEAKAGE INDUCTANCE (LLI): 0.4μH MAX @ 100kHz; 0 IVRMS  
 - INTERWINDING CAPACITANCE (ICW): 12pF MAX @ 100kHz; 0 IVRMS  
 - ISOLATION VOLTAGE: COMPLIES WITH IEEE802.3af 2003, PARA 33.4.1, ITEM 0.
- OPERATING TEMPERATURE: FROM 0° TO +70°C.**
- IF THE LED WITH 250 OHM RESISTORS, LED IS DRIVEN WITH 5V VOLTAGE AND THE MAX OPERATING CURRENT IS 20mA.**  
 LED COLOR - DOMINANT WAVELENGTH (λD): GREEN 568 nm TYP. @ VF=5V  
 FORWARD CURRENT (IF): GREEN 12 mA TYP. @ VF=5V  
 DOMINANT WAVELENGTH (λD): YELLOW 588 nm TYP. @ VF=5V  
 FORWARD CURRENT (IF): YELLOW 10 mA TYP. @ VF=5V
- INDICATED CONNECTIONS ARE FOR NIC CONFIGURATION.**
- TYCO ELECTRONICS LOGO, PART NUMBER, DATE CODE, COUNTRY OF ORIGIN AND AGENCY APPROVAL MARKING IN APPROXIMATE LOCATION SHOWN.**
- THESE PARTS ARE RECOMMENDED FOR WAVE SOLDERING PROCESS. PREHEAT TEMPERATURE IS 120°C TO 160°C, 120 SECONDS TO 180 SECONDS, PEAK WAVE SOLDERING TEMPERATURE IS 260°C MAX, 10 SECONDS MAX.**

GREEN	GREEN	1-6605755-1
GREEN	YELLOW	6605755-1
LED1	LED2	PART NUMBER

THIS DRAWING IS A CONTROLLED DOCUMENT.			DATE: 10/18/99			REVISED: 10/18/99		
DESIGNER:	DATE:	APPROVED:	DATE:	REVISED:	DATE:	BY:	DATE:	BY:
TITLE: 725 SERIES MAGNETIC CIRCUIT, SHIELDED, WITH RESISTOR LEADS		PART NO: 1-6605755-1		REV: 22		CUSTOMER DRAWING		