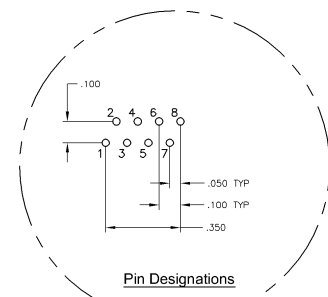
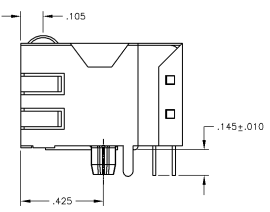
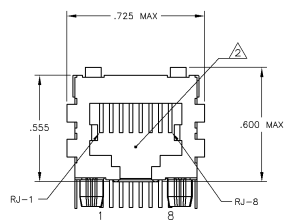
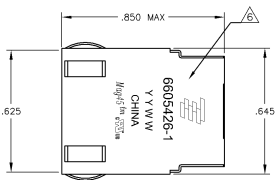
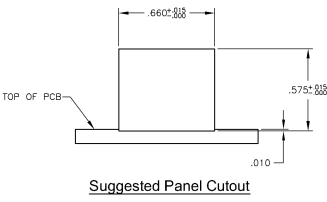


MECHANICAL:

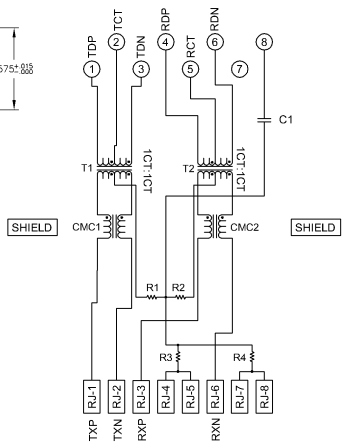


Pin Designations

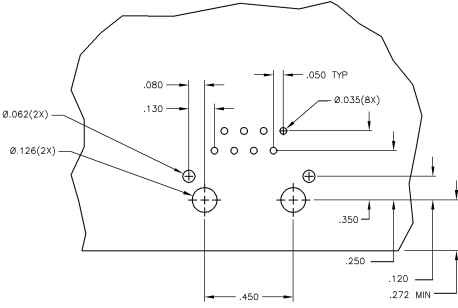
- △ MATERIALS
HOUSING - THERMOPLASTIC PET POLYESTER FLAMMABILITY RATING UL 94V-0
SHIELD - .010" THICK, C26800 BRASS PREPLATED WITH 50µINCH MIN SEMI-BRIGHT NICKEL. SOLDER TABS POST DIPPED WITH 100µINCH MIN SAC SOLDER.
MOD JACK CONTACTS - 0.0157 X 0.018" PHOSPHOR BRONZE, 50µINCH MIN OVERALL NICKEL UNDERPLATE, WITH SELECT 50µINCH MIN HARD GOLD FINISH PLATE. SOLDER TAILS WITH 100µINCH MIN MATTE TIN AND/OR SAC SOLDER DIP.
- △ RJ45 JACK CAVITY CONFORMS TO FCC RULES AND REGULATIONS PART 68, SUB PART F.
- △ MAGNETICS
-IMPEDANCE: 100 OHMS
-TURNS RATIO (CHP CABLE): TX = 11, RX = 11
-OPEN CIRCUIT INDUCTANCE (OCL): 350µH MIN @100kHz, 0.1VRMS.
-BIASED BIAS FROM 0°C TO 70°C, TX AND RX
-PERFORMANCE @ 25°C:
 INSERTION LOSS (IL): 1.1dB MAX FROM 0.5MHz TO 100MHz
 RETURN LOSS (RL): 18dB MIN FROM 0.5MHz TO 30MHz
 18-20LOG(f/30dB) MIN FROM 30 MHz TO 60MHz
 12dB MIN FROM 60.1MHz TO 80MHz
 CROSSTALK ATTENUATION: 35dB MIN FROM 0.5MHz TO 40MHz
 33-20+LOG(f/50dB) MIN FROM 40.1MHz TO 100MHz
 COMMON MODE REJECTION RATIO (CMRR): 30dB MIN FROM 0.5MHz TO 100MHz
-ISOLATION VOLTAGE: COMPLIES WITH IEEE802.3 2002, PARA 23.5.11, ITEM b.



426P1 SERIES MAGNETIC CIRCUIT



C1 = 1000 pF, 2KV CAPACITOR
R1-R4 = 75 OHMS, 1/16 W RESISTORS



Suggested PCB Layout (Component Side)

THIS DRAWING IS A CONTROLLED DOCUMENT		REV	DATE	REVISIONS
DESIGNED BY	DR	1	000000	000000
CHECKED BY	DR	1	000000	000000
APPROVED BY	DR	1	000000	000000
DATE	0000-00-00	1	000000	000000
SCALE	1:1	1	000000	000000
CUSTOMER DRAWING		SCALE	NTS	SHEET 1 OF 1

6605426-1
PART NUMBER

ORGANIZATION	1X1	1X1	1X1	1X1
REV	1	1	1	1
DATE	0000-00-00	0000-00-00	0000-00-00	0000-00-00
DESCRIPTION	1X1 MAG45TM) MODULAR JACK, 42P1 SCHEMATIC, 26 SERIES CIRCUIT, SHIELDED, DECOUPLING CAPACITOR, NO LEADS	1X1 MAG45TM) MODULAR JACK, 42P1 SCHEMATIC, 26 SERIES CIRCUIT, SHIELDED, DECOUPLING CAPACITOR, NO LEADS	1X1 MAG45TM) MODULAR JACK, 42P1 SCHEMATIC, 26 SERIES CIRCUIT, SHIELDED, DECOUPLING CAPACITOR, NO LEADS	1X1 MAG45TM) MODULAR JACK, 42P1 SCHEMATIC, 26 SERIES CIRCUIT, SHIELDED, DECOUPLING CAPACITOR, NO LEADS
APPROVAL	1	1	1	1
DATE	0000-00-00	0000-00-00	0000-00-00	0000-00-00
SCALE	1:1	1:1	1:1	1:1
CUSTOMER DRAWING	1	1	1	1