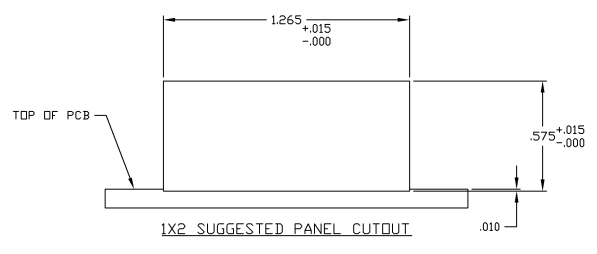
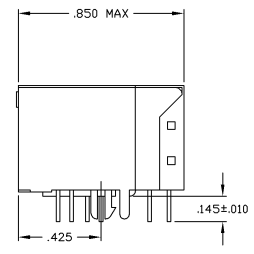
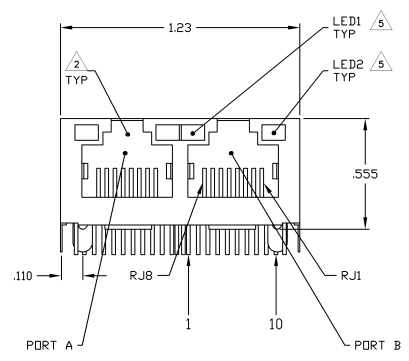
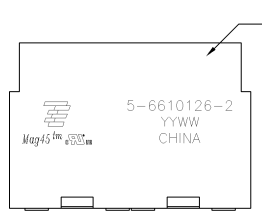


REV	DATE	DESCRIPTION	BY	CHK
AA	22			
B		REV PER ECO-08-012990		

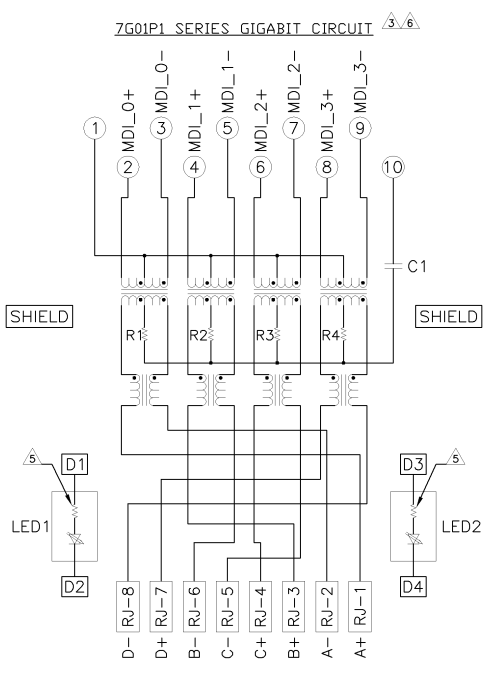
MECHANICAL:



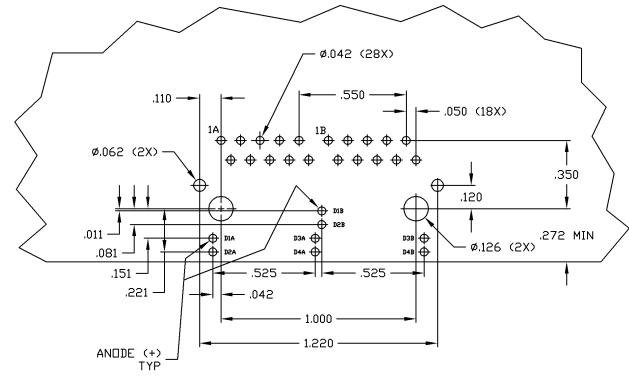
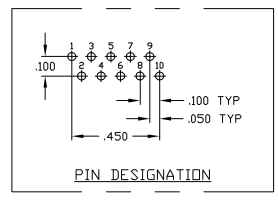
1. MATERIALS
 - HOUSING - THERMOPLASTIC PET POLYESTER FLAMMABILITY RATING UL 94V-0
 - SHIELD - .010" THICK, C26800 BRASS PREPLATED WITH 10µINCH MIN SEMI-BRIGHT NICKEL SOLDER TABS POST DIPPED WITH 100µINCH MIN SAC SOLDER
 - MOD JACK CONTACTS - 0.0157 X 0.018" PHOSPHOR BRONZE, 50µINCH MIN OVERALL NICKEL UNDERPLATE WITH SELECT 50µINCH MIN HARD GOLD FINISH PLATE
 - SOLDER TAILS WITH 300µINCH MIN MATTE TIN AND/OR SAC SOLDER DIP
 - LIGHT EMITTING DIODE (LED) - DIFFUSED EPOXY LENS, 0.20" X 0.20" CARBON STEEL WIREFRAME LEADS PRE-PLATED WITH 80µINCH SILVER OVER 40µINCH NICKEL UNDERPLATE OVER 10µINCH COPPER UNDERPLATE. POST-PLATED WITH 10µINCH MIN MATTE TIN AND/OR SAC SOLDER DIP OR PURE TIN SOLDER DIP
2. RJ45 JACK CAVITY CONFORMS TO FCC RULES AND REGULATIONS PART 68, SUB PART F
3. MAGNETICS
 - IMPEDANCE: 100 OHMS
 - TURNS RATIO (CHP CABLE): 1:1 ALL FOUR PAIRS
 - OPEN CIRCUIT INDUCTANCE (OCL): 350nH MIN @ 100MHz, 0.1VRMS
 - 0dBdc BIAS FROM 0°C TO 70°C, ALL FOUR PAIRS
 - ALL FOUR PAIRS BI-DIRECTIONAL
 - PERFORMANCE @ 25°C
 - INSERTION LOSS (IL): 1.0dB MAX FROM 0.5MHz TO 100MHz
 - RETURN LOSS (RL): 18dB MIN FROM 0.5MHz TO 40MHz
 - 12-20LOG(F/80)dB MIN FROM 40MHz TO 100MHz
 - CROSSTALK ATTENUATION: 35dB MIN FROM 0.5MHz TO 40MHz
 - 33-20-LOG(F/50)dB MIN FROM 40MHz TO 100MHz
 - COMMON MODE REJECTION RATIO (CMRR): 30dB MIN FROM 0.5MHz TO 100MHz
 - ISOLATION VOLTAGE: COMPLIES WITH IEEE802.3 2002, PARA 4.0.6.11, ITEM b
4. OPERATING TEMPERATURE FROM 0°C TO -70°C
5. THE LED WITH 250 OHM RESISTORS, LED IS DRIVEN WITH 5V VOLTAGE AND THE MAX OPERATING CURRENT IS 20mA. LED COLOR
 - DOMINANT WAVELENGTH (DD): GREEN 568nm TYP. @ VF=5V
 - FORWARD CURRENT (IF): GREEN 12 mA TYP. @ VF=5V
 - DOMINANT WAVELENGTH (DD): YELLOW 588 nm TYP. @ VF=5V
 - FORWARD CURRENT (IF): YELLOW 13 mA TYP. @ VF=5V
6. THE MAGNETICS ARE SYMMETRICAL AND SUPPORT AUTO-MDI/MDX
7. TYCO ELECTRONICS LOGO, PART NUMBER, DATE CODE, COUNTRY OF ORIGIN AND AGENCY APPROVAL MARKING IN APPROXIMATE LOCATION SHOWN
8. THE PART IS RECOMMENDED FOR WAVE SOLDERING PROCESS, PEAK WAVE SOLDERING TEMPERATURE IS 265°C, MAX. 10 SECONDS MAX.

YES	YELLOW	GREEN	5-6610126-2
2KV DECOUPLING CAPACITOR	LED1	LED2	PART NUMBER

THIS DRAWING IS A CONTROLLED DOCUMENT	THE AGENCY APPROVAL	THE CUSTOMER APPROVAL	TYCO ELECTRONICS CORPORATION
DATE: 10/22/2008	DATE: 10/22/2008	DATE: 10/22/2008	DATE: 10/22/2008
BY: [Signature]	BY: [Signature]	BY: [Signature]	BY: [Signature]
FOR: [Signature]	FOR: [Signature]	FOR: [Signature]	FOR: [Signature]
REV: 1	REV: 1	REV: 1	REV: 1
REV: 2	REV: 2	REV: 2	REV: 2
REV: 3	REV: 3	REV: 3	REV: 3
REV: 4	REV: 4	REV: 4	REV: 4
REV: 5	REV: 5	REV: 5	REV: 5
REV: 6	REV: 6	REV: 6	REV: 6
REV: 7	REV: 7	REV: 7	REV: 7
REV: 8	REV: 8	REV: 8	REV: 8
REV: 9	REV: 9	REV: 9	REV: 9
REV: 10	REV: 10	REV: 10	REV: 10
REV: 11	REV: 11	REV: 11	REV: 11
REV: 12	REV: 12	REV: 12	REV: 12
REV: 13	REV: 13	REV: 13	REV: 13
REV: 14	REV: 14	REV: 14	REV: 14
REV: 15	REV: 15	REV: 15	REV: 15
REV: 16	REV: 16	REV: 16	REV: 16
REV: 17	REV: 17	REV: 17	REV: 17
REV: 18	REV: 18	REV: 18	REV: 18
REV: 19	REV: 19	REV: 19	REV: 19
REV: 20	REV: 20	REV: 20	REV: 20
REV: 21	REV: 21	REV: 21	REV: 21
REV: 22	REV: 22	REV: 22	REV: 22
REV: 23	REV: 23	REV: 23	REV: 23
REV: 24	REV: 24	REV: 24	REV: 24
REV: 25	REV: 25	REV: 25	REV: 25
REV: 26	REV: 26	REV: 26	REV: 26
REV: 27	REV: 27	REV: 27	REV: 27
REV: 28	REV: 28	REV: 28	REV: 28
REV: 29	REV: 29	REV: 29	REV: 29
REV: 30	REV: 30	REV: 30	REV: 30
REV: 31	REV: 31	REV: 31	REV: 31
REV: 32	REV: 32	REV: 32	REV: 32
REV: 33	REV: 33	REV: 33	REV: 33
REV: 34	REV: 34	REV: 34	REV: 34
REV: 35	REV: 35	REV: 35	REV: 35
REV: 36	REV: 36	REV: 36	REV: 36
REV: 37	REV: 37	REV: 37	REV: 37
REV: 38	REV: 38	REV: 38	REV: 38
REV: 39	REV: 39	REV: 39	REV: 39
REV: 40	REV: 40	REV: 40	REV: 40
REV: 41	REV: 41	REV: 41	REV: 41
REV: 42	REV: 42	REV: 42	REV: 42
REV: 43	REV: 43	REV: 43	REV: 43
REV: 44	REV: 44	REV: 44	REV: 44
REV: 45	REV: 45	REV: 45	REV: 45
REV: 46	REV: 46	REV: 46	REV: 46
REV: 47	REV: 47	REV: 47	REV: 47
REV: 48	REV: 48	REV: 48	REV: 48
REV: 49	REV: 49	REV: 49	REV: 49
REV: 50	REV: 50	REV: 50	REV: 50
REV: 51	REV: 51	REV: 51	REV: 51
REV: 52	REV: 52	REV: 52	REV: 52
REV: 53	REV: 53	REV: 53	REV: 53
REV: 54	REV: 54	REV: 54	REV: 54
REV: 55	REV: 55	REV: 55	REV: 55
REV: 56	REV: 56	REV: 56	REV: 56
REV: 57	REV: 57	REV: 57	REV: 57
REV: 58	REV: 58	REV: 58	REV: 58
REV: 59	REV: 59	REV: 59	REV: 59
REV: 60	REV: 60	REV: 60	REV: 60
REV: 61	REV: 61	REV: 61	REV: 61
REV: 62	REV: 62	REV: 62	REV: 62
REV: 63	REV: 63	REV: 63	REV: 63
REV: 64	REV: 64	REV: 64	REV: 64
REV: 65	REV: 65	REV: 65	REV: 65
REV: 66	REV: 66	REV: 66	REV: 66
REV: 67	REV: 67	REV: 67	REV: 67
REV: 68	REV: 68	REV: 68	REV: 68
REV: 69	REV: 69	REV: 69	REV: 69
REV: 70	REV: 70	REV: 70	REV: 70
REV: 71	REV: 71	REV: 71	REV: 71
REV: 72	REV: 72	REV: 72	REV: 72
REV: 73	REV: 73	REV: 73	REV: 73
REV: 74	REV: 74	REV: 74	REV: 74
REV: 75	REV: 75	REV: 75	REV: 75
REV: 76	REV: 76	REV: 76	REV: 76
REV: 77	REV: 77	REV: 77	REV: 77
REV: 78	REV: 78	REV: 78	REV: 78
REV: 79	REV: 79	REV: 79	REV: 79
REV: 80	REV: 80	REV: 80	REV: 80
REV: 81	REV: 81	REV: 81	REV: 81
REV: 82	REV: 82	REV: 82	REV: 82
REV: 83	REV: 83	REV: 83	REV: 83
REV: 84	REV: 84	REV: 84	REV: 84
REV: 85	REV: 85	REV: 85	REV: 85
REV: 86	REV: 86	REV: 86	REV: 86
REV: 87	REV: 87	REV: 87	REV: 87
REV: 88	REV: 88	REV: 88	REV: 88
REV: 89	REV: 89	REV: 89	REV: 89
REV: 90	REV: 90	REV: 90	REV: 90
REV: 91	REV: 91	REV: 91	REV: 91
REV: 92	REV: 92	REV: 92	REV: 92
REV: 93	REV: 93	REV: 93	REV: 93
REV: 94	REV: 94	REV: 94	REV: 94
REV: 95	REV: 95	REV: 95	REV: 95
REV: 96	REV: 96	REV: 96	REV: 96
REV: 97	REV: 97	REV: 97	REV: 97
REV: 98	REV: 98	REV: 98	REV: 98
REV: 99	REV: 99	REV: 99	REV: 99
REV: 100	REV: 100	REV: 100	REV: 100



C1 = 1000 pF, 2kV CAPACITOR
 R1-R4 = 75 OHMS, 1/16 W RESISTORS



THIS DRAWING IS A CONTROLLED DOCUMENT		REV. 22	DATE	22	BY	AA
DRAWN BY		DESIGNED BY	APPROVED BY	DATE	BY	DATE
CHECKED BY		DATE	BY	DATE	BY	DATE
MATERIAL		QUANTITY	UNIT	DATE	BY	DATE
CUSTOMER DRAWING		SCALE	4:1	SHEET	2	TOTAL
PART NO.		6610126				