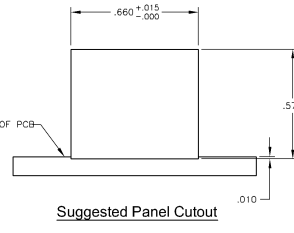
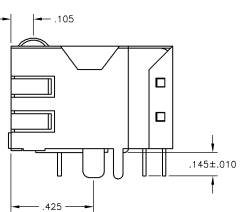
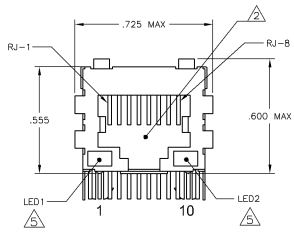
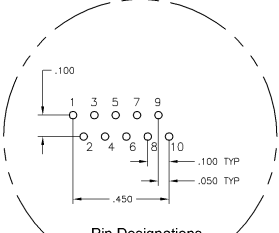
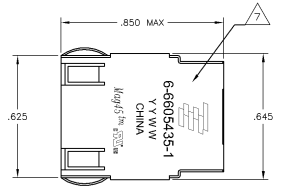
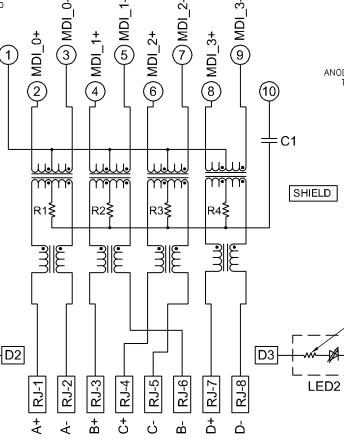


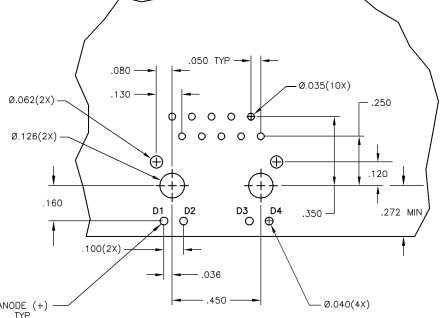
MECHANICAL:



4G01P1 GIGABIT MAGNETIC CIRCUIT



C1 = 1000 pF, 2kV CAPACITOR
R1-R4 = 75 OHMS, 1/16 W RESISTORS



Suggested PCB Layout (Component Side)

- △ MATERIALS:
HOUSING - THERMOPLASTIC PET POLYESTER (FLAMMABILITY DATASHEET: 94V-0)
SHIELD - .007" THICK, .12000 BRASS PREPLATED WITH 50μINCH SEM-BRIGHT
NICKEL, COUPLER FABS POST-DRIPPED WITH 10μINCH MIN. GAL. COUPLER
MID-JACK CONTACTS - E-853 7.85μ IN PHOSPHOR BRONZE, 50μINCH MIN OVERALL NICKEL UNDERPLATE, WITH SELECT
10μINCH MIN PAD GOLD-FREEMETAL COUPLERS WITH 10μINCH MIN NATE TIN AND 20μ GAL. COUPLER DIP
LIGHT-EMITTING DIODES - DIFFUSED EPOXY LENS, 525 ± 25° CARBON STEEL WIREFRAME LEADS PRE-PLATED
WITH 10μINCH CL. YED OVER 10μINCH NICKEL UNDERPLATE OVER 10μINCH COUPLER UNDERPLATE POST-PLATED WITH
10μINCH MIN NATE TIN AND 20μ GAL. COUPLER DIP. PINE TIN COUPLER DIP
- △ BIAS JACK CAVITY CONFORMS TO FCC RULES AND REGULATIONS PART 48, SUB PART F
- △ MAGNETICS:
- IMPEDANCE: 90 OHMS
- TURNS RATIO (SIGNAL): 1:1 ALL FOUR Pairs
- OPEN-CIRCUIT INDUCTANCE (DC): 150μH MIN @ 100kHz; 0.1μH MS
- WINDING GAUGE FROM 30° TO 70°, ALL FOUR Pairs
- ALL FOUR Pairs B/DIRECTIONAL
- PERFORMANCE @ 25°C:
- INSERTION LOSS (IL): 15dB MAX FROM 50MHz TO 100MHz
- RETURN LOSS (RL): 18dB MIN FROM 50MHz TO 100MHz
- ISOLATION FROM 50 MHz TO 100MHz
- CROSSTALK ATTENUATION: 35dB FROM 50MHz TO 100MHz
- 10:1 ISOLATION FROM 50 MHz TO 100MHz
- COMMON MODE REJECTION RATIO (CMRR): 30dB MIN FROM 50MHz TO 100MHz
- COIL A-TURN VOLTAGE (COMPLEX WITH REFLECTED) 200V PAKA 4.5 A 1.0 μm

- 4. OPERATING TEMPERATURE FROM 0° TO +70°C
- △ THE 150 OHM LED RESISTORS ARE OPTIONAL. PLEASE SEE CHART FOR PRESENCE OR ABSENCE OF LED RESISTORS IF THE LED WITHOUT 150 OHM RESISTORS, LED IS DRIVEN WITH CONSTANT CURRENT AT APPROX 20mA
LED COLOR: DOMINANT WAVELENGTH (nm) GREEN 560 nm TYP. IF F-20mA
FORWARD VOLTAGE (VFS) GREEN 2.2V TYP. IF F-20mA
DOMINANT WAVELENGTH (nm) YELLOW 580 nm TYP. IF F-20mA
IF THE LED WITH 150 OHM RESISTORS, LED IS DRIVEN WITH 5V VOLTAGE AND THE MAX OPERATING CURRENT IS 20mA
LED COLOR: DOMINANT WAVELENGTH (nm) GREEN 560 nm TYP. IF F-20mA
FORWARD CURRENT (IF) GREEN 10 mA TYP. IF VFS
DOMINANT WAVELENGTH (nm) YELLOW 580 nm TYP. IF VFS
FORWARD CURRENT (IF) YELLOW 10 mA TYP. IF VFS
- △ THE MAGNETICS ARE SYMMETRICAL AND SUPPORT AUTO-HOT/POX
- △ TTYO ELECTRONICS LOGO, PART NUMBER, DATE CODE, COUNTRY OF ORIGIN AND AGENCY APPROVAL MARKING IN APPROXIMATE LOCATION SHOWN
- 8. THESE PARTS ARE RECOMMENDED FOR WAVE SOLDERING PROCESS. PREHEAT TEMPERATURE IS 100°C TO 140°C. 10 SECONDS TO 180° SECONDS PEAK WAVE SOLDERING TEMPERATURE IS 240°C MAX. 10 SECONDS MAX.

YES	GREEN	YES	GREEN	YES	6-6605435-1
YES	GREEN	NO	YELLOW	NO	5-6605435-8
YES	GREEN/YELLOW	NO	GREEN/YELLOW	NO	5-6605435-6
YES	GREEN	YES	YELLOW	YES	5-6605435-1

DECOUPLING CAPACITOR	LED1/5	150 OHM RESISTOR	LED2/5	150 OHM RESISTOR	PART NUMBER
THIS DRAWING IS A CONTROLLED DOCUMENT					
DESIGNED BY		DATE	DRAWN BY		DATE
CHECKED BY		DATE	APPROVED BY		DATE
MATERIAL		SCALE	CUSTOMER DRAWING		NO. 1-1