

## INTEGRATED CONNECTOR MODULES

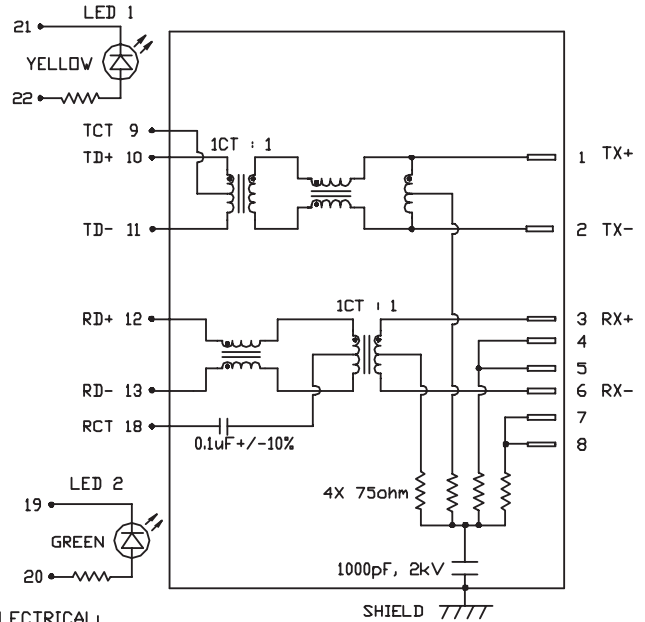
### C893-1AX1-E1 10/100Base-TX MagJack® with LEDs



LED2 POLARITY			LED1 POLARITY		
PIN 19	PIN 20	COLOR	PIN 21	PIN 22	COLOR
-	+	GREEN	-	+	YELLOW

#### ELECTRICAL CHARACTERISTICS @ 25°C

<b>TURNS RATIO</b>		
TX	1CT : 1CT ±3%	
RX	1CT : 1CT ±3%	
<b>OCL @ 100kHz, 100mVRMS</b>		
8mA DC BIAS	350uH MIN	
<b>INS. LOSS</b>		
100KHZ TO 100MHZ	-1.0 dB MAX	
<b>RET. LOSS (MIN)</b>		
1MHZ-30MHZ	-20 dB	
30MHZ-60MHZ	-[19-20LOG(F/30MHZ)] dB	
60MHZ-80MHZ	-12 dB	
<b>CM TO CM REJ</b>		
100kHz - 100MHZ	-30 dB MIN	
100MHZ - 130MHZ	-20 dB MIN	
<b>CROSS TALK</b>		
1MHZ - 65MHZ	-35 dB MIN	
65MHZ - 100MHZ	-30 dB MIN	
<b>HIPOT (Isolation Voltage):</b>		1500 Vrms
<b>LEAKAGE INDUCTANCE</b>		
PRIMARY W/ SECONDARY	0.3uH Max. @ 1MHz	
<b>INTERWINDING CAPACITANCE</b>		
PER CHANNEL (PRI. TO SEC.)	30pF Max @ 1MHz	
<b>DC RESISTANCE</b>		
(RJ1-RJ2)=(RJ3-RJ6)	1.2 ohms Max	
<b>LED 1</b>		
V <sub>F</sub> (FORWARD VOLTAGE)	I <sub>F</sub> =20mA	YELLOW 2.1V TYP.
λ <sub>D</sub> (DOMINANT WAVELENGTH)	I <sub>F</sub> =20mA	YELLOW 590nm TYP.
<b>LED 2</b>		
V <sub>F</sub> (FORWARD VOLTAGE)	I <sub>F</sub> =20mA	GREEN 2.2V TYP.
λ <sub>D</sub> (DOMINANT WAVELENGTH)	I <sub>F</sub> =20mA	GREEN 565nm TYP.

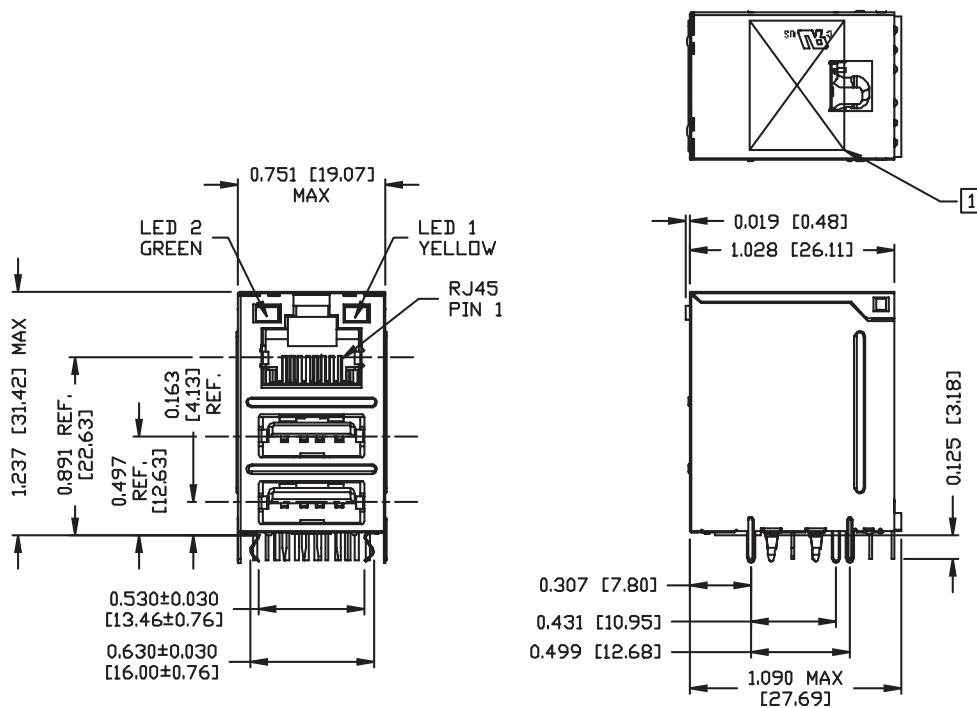


<b>USB ELECTRICAL:</b>	
INSULATION RESISTANCE:	1000 MEG Ω (MIN)
CONTACT RESISTANCE:	25 MILLI Ω (MAX)
DIELECTRIC WITHSTANDING:	750 VAC

**INTEGRATED CONNECTOR MODULES**  
**C893-1AX1-E1 10/100Base-TX MagJack® with LEDs**



MECHANICAL SPECIFICATION

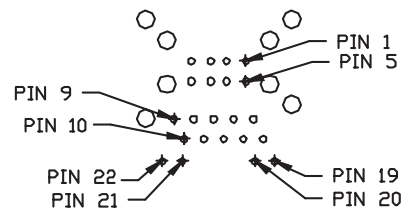
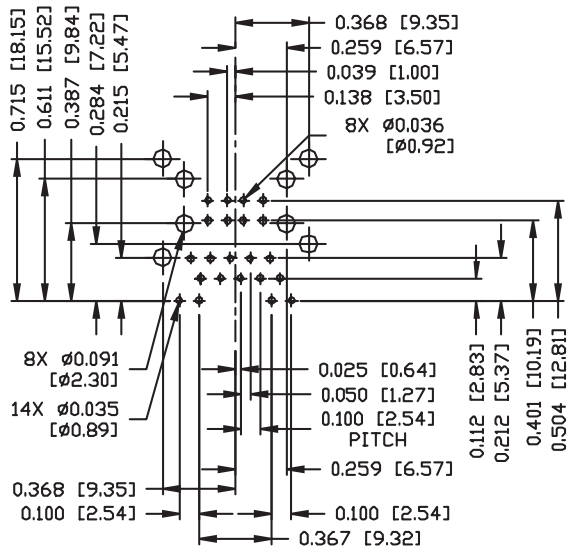


## INTEGRATED CONNECTOR MODULES

C893-1AX1-E1 10/100Base-TX MagJack® with LEDs



Recommended PCB footprint  
Component Side



RJ45 MECHANICAL

PLASTIC HOUSING:

THERMOPLASTIC PBT  
FLAMMABILITY RATING UL 94V-0

CONTACTS PLATING:

50 MICRO-INCH HARD GOLD PLATING

PINS:

TIN-COATED CP WIRE, DIA 0.018 INCH.

METAL SHIELD:

TIN PLATED ON COPPER ALLOY.

USB MECHANICAL:

35 NEWTONS MAXIMUM

MATING FORCE:

10 NEWTONS MINIMUM

UNMATING FORCE:

PROSPER BRONZE, GOLD PLATING ON

CONTACTS PLATING:

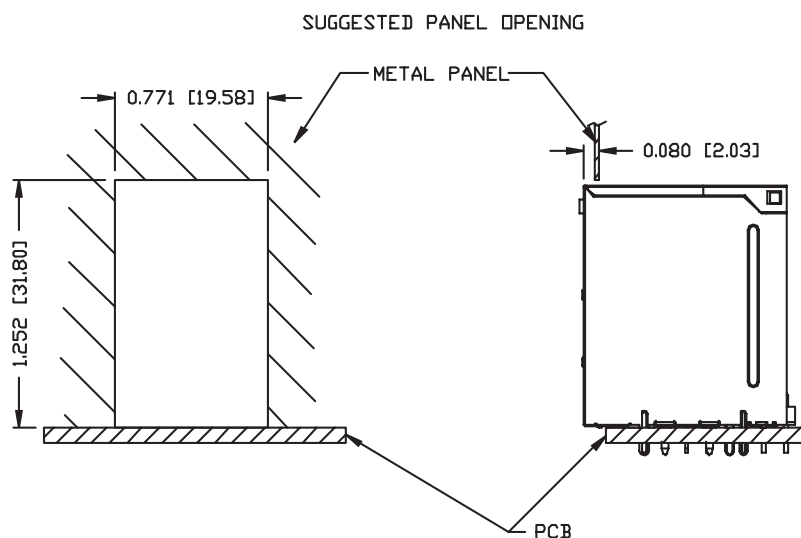
CONTACT AREA AND TIN ON SOLDER TAIL.

US UL RECOGNIZED - FILE #E196366 AND E169987.

ROHS COMPLIANCE, PER EU DIRECTIVE 2002/95/EC.

**1.** MARK PART WITH MFG LOGO, MFG NAME, PART NUMBER, AND DATE CODE.

**INTEGRATED CONNECTOR MODULES**  
**C893-1AX1-E1 10/100Base-TX MagJack® with LEDs**



**NOTE:**  
 THE DISTANCE OF PANEL INSIDE SURFACE RELATIVE TO FRONT SURFACE OF PART IS ONLY A SUGGESTION.  
 IN CASE THIS DISTANCE IS DIFFERENT, THE REQUIRED PANEL OPENING DIMENSIONS CHANGE ACCORDINGLY.

**PACKING INFORMATION**

PACKING TRAY : 0200-9999-H3 (TOP)  
 0200-9999-H4 (BOTTOM)

PACKING QUANTITY : 35 PCS FINISHED GOODS PER TRAY  
 10 TRAY (350 PCS FINISHED GOODS) PER CARTON BOX

**NOTE :** CARDBOARDS ARE PLACED BETWEEN LAYERS OF PACKING TRAY INSIDE CARTON BOX  
 (INCLUDE THE UPPERMOST AND LOWERMOST TRAY)