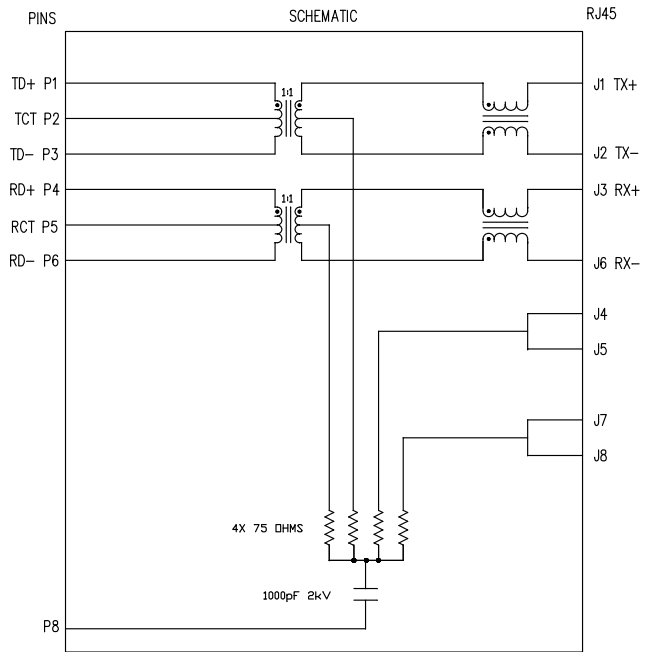


THE INFORMATION CONTAINED HEREIN IS CONSIDERED "PROPRIETARY" TO BEL FUSE INC. AND SHALL NOT BE COPIED, REPRODUCED OR DISCLOSED WITHOUT THE WRITTEN APPROVAL OF BEL FUSE INC.



ELECTRICAL CHARACTERISTICS @ 25°C

OPERATING TEMPERATURE RANGE:	: -40°C TO +85°C	
1.0 TURNS RATIO: (P6-P5-P4) : (J6-J3)	:	1CT : 1CT ± 3%
(P3-P2-P1) : (J2-J1)	:	1CT : 1CT ± 3%
2.0 INDUCTANCE: (P6-P4)	:	350uH MIN. @ 0.1V, 100KHz, 8mA DC Bias
(P3-P1)	:	350uH MIN. @ 0.1V, 100KHz, 8mA DC Bias
3.0 LEAKAGE INDUCTANCE: P6-P4 (WITH J6 AND J3 SHORT)	:	0.3uH MAX. @ 1MHz
P3-P1 (WITH J2 AND J1 SHORT)	:	0.3uH MAX. @ 1MHz
4.0 INTERWINDING CAPACITANCE: (P6,P5,P4) TO (J6,J3)	:	40pF MAX @ 1MHz
(P3,P2,P1) TO (J2,J1)	:	40pF MAX. @ 1MHz
5.0 DC RESISTANCE: (J6-J3)=(J2-J1)	:	1.2 ohms Max.
6.0 RETURN LOSS: (P6-P4)=100 OHMS AND (P1-P3)=100 OHM REF.	:	18dB MIN.
1MHz TO 30MHz	:	12dB MIN.
60MHz TO 80MHz	:	
NOTE: 100 OHMS CONNECTED TO (J2-J1) OR (J6-J3).		
7.0 DIELECTRIC WITHSTAND: (J1, J2) TO (P1, P3)	:	1500 Vrms
(J3, J6) TO (P4,P6)	:	1500 Vrms
8.0 INSERTION LOSS: RS=RL=100 ohms	:	1.1 dB TYP
100KHz TO 100MHz	:	
9.0 RISE TIME: RS=100 OHMS AND RL = 100 OHMS	:	3.0 nS MAX
OUTPUT VOLTAGE = 1 V peak	:	3.0 nS MAX
PULSE WIDTH= 112ns	:	
10.0 CROSS TALK: 1MHz TO 100MHz	:	40 dB TYP
11.0 COMMON TO COMMON MODE ATTENUATION: 30MHz TO 100MHz	:	35dB TYP



NOTES

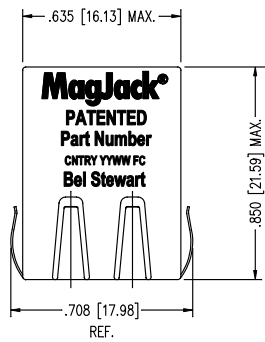
1.0 PINS WITHOUT ELECTRICAL CONNECTION ARE OMITTED.

ORIGINATED BY Bain Liu	DATE 09-03-09	TITLE MagJack® 10/100BT TAB DOWN, SHIELDED PATENTED	PART NO. / DRAWING NO. SI-60118-F	STANDARD DIM. TOL. IN INCH .X .XX .XXX ±0.005	[] METRIC DIM. AS REFERENCE UNIT : INCH [mm] SCALE : N/A REV. : A0 SIZE : A4 PAGE : 2	bel COMPONENTS FOR A CONNECTED PLANT
DRAWN BY Bain Liu	DATE 09-03-09	FILE NAME SI-60118-F.DWG				

FM996185 REV B1

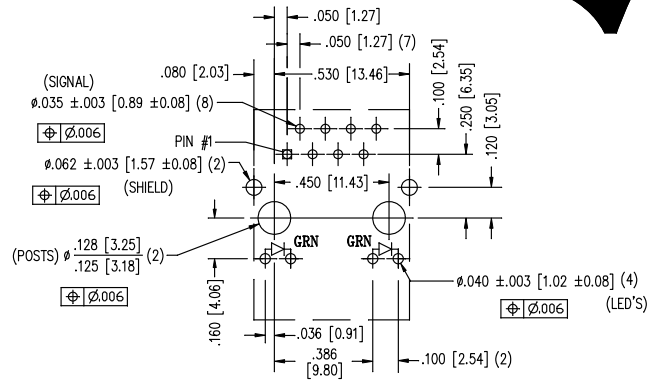
This document is electronically generated. This is a controlled copy if used internally

THE INFORMATION CONTAINED HEREIN IS CONSIDERED "PROPRIETARY" TO BEL FUSE INC. AND SHALL NOT BE COPIED, REPRODUCED OR DISCLOSED WITHOUT THE WRITTEN APPROVAL OF BEL FUSE INC.



LED SPECIFICATION			
STANDARD LED	WAVELENGTH	FORWARD V (MAX)	* (TYP)
GREEN	565 nm	2.5 V	2.1 V

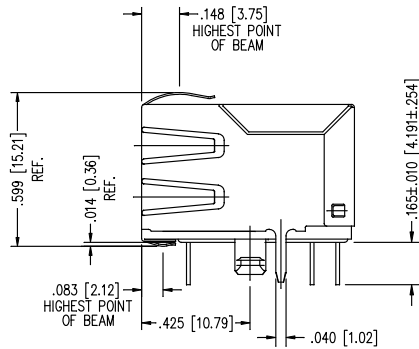
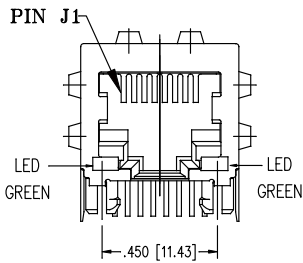
*WITH A FORWARD CURRENT OF 20 mA (TYP)



P.C.B. RECOMMENDED HOLE LAYOUT
SEEN FROM COMPONENT SIDE
ALL CENTERLINE DIMENSIONS ARE BASIC.

NOTES:

- CONNECTOR MATERIALS:
HOUSING: THERMOPLASTIC UL94 V-0
CONTACT/SHIELD: COPPER ALLOY
SHIELD PLATING: NICKEL OR TIN
CONTACT PLATING: SELECTIVE GOLD,
50 MICRO-INCHES MIN. IN CONTACT AREA.
- PIN NOT ELECTRICALLY CONNECTED MAYBE OMITTED.
SEE ELECTRICAL DRAWING FOR OMITTED PINS.
- TOLERANCES COMPLY WITH F.C.C. DIMENSION REQUIREMENTS.
- ALL TOLERANCES NOT OTHERWISE SPECIFIED TO BE ±.005 [0.13]
- REFLOW AND WAVE SOLDER COMPATIBLE -260°C FOR 10 SECONDS MAX.



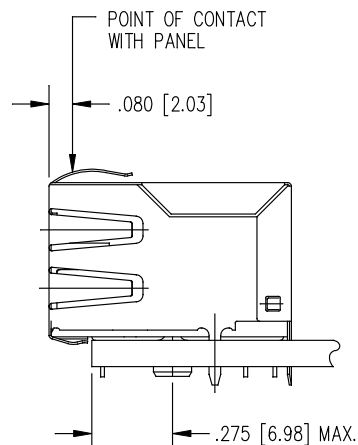
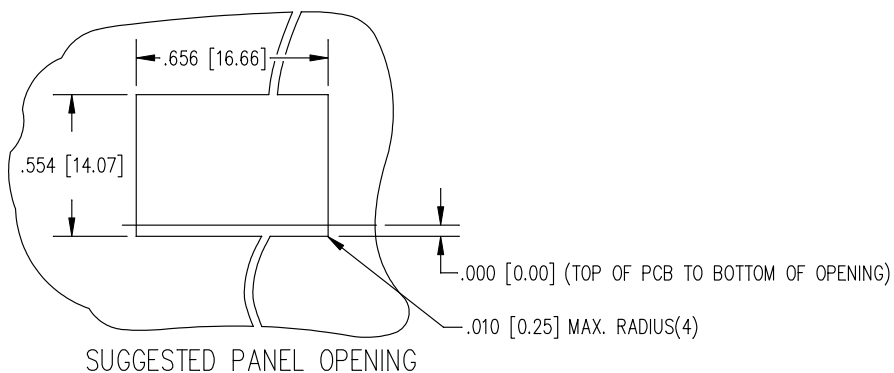
ORIGINATED BY	DATE	TITLE
Bain Liu	09-03-09	MagJack® 10/100BT TAB DOWN, SHIELDED PATENTED
DRAWN BY	DATE	
Bain Liu	09-03-09	

PART NO. / DRAWING NO.	STANDARD DIM. TOL. IN INCH
SI-60118-F	.X .XX .XXX ±0.005
FILE NAME	[] METRIC DIM. AS REFERENCE
SI-60118-F.DWG	UNIT : INCH [mm] SCALE : N/A

REV. : A0	SIZE : A4
PAGE : 3	

FM999185 REV B1 This document is electronically generated. This is a controlled copy if used internally

THE INFORMATION CONTAINED HEREIN IS CONSIDERED "PROPRIETARY" TO BEL FUSE INC. AND SHALL NOT BE COPIED, REPRODUCED OR DISCLOSED WITHOUT THE WRITTEN APPROVAL OF BEL FUSE INC.



1. THE SUGGESTED PANEL OPENING IS INTENDED TO GIVE THE USER THE ABILITY TO HAVE REASONABLE JACK / PANEL CLEARANCES YET MAINTAIN RELIABLE GROUNDING CAPABILITY.
2. ALL TOLERANCES NOT OTHERWISE SPECIFIED TO BE ± 0.005 [0.13]

ORIGINATED BY	DATE	TITLE	PART NO. / DRAWING NO.	STANDARD DIM. TOL. IN INCH	[] METRIC DIM. AS REFERENCE
Bain Liu	09-03-09	MagJack® 10/100BT TAB DOWN, SHIELDED PATENTED	SI-60118-F	.X	UNIT : INCH [mm]
DRAWN BY	DATE		FILE NAME	.XX	SCALE : N/A
Bain Liu	09-03-09		SI-60118-F.DWG	.XXX ±0.005	REV. : A0 SIZE : A4 PAGE : 4



FM996185 REV B1

This document is electronically generated. This is a controlled copy if used internally