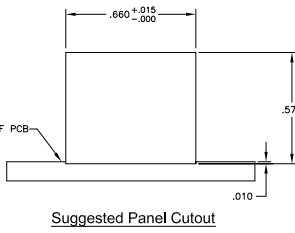
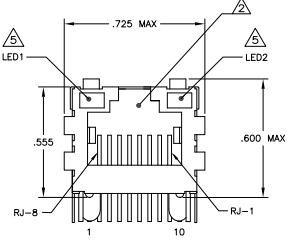
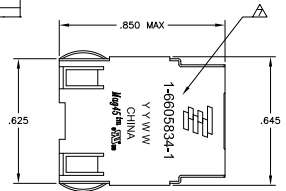
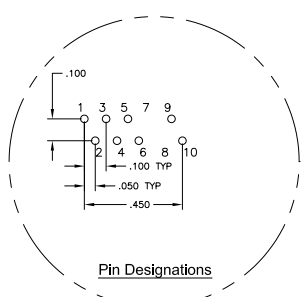


THIS DRAWING IS UNCLASSIFIED  
 UNLESS INDICATED OTHERWISE  
 ALL RIGHTS RESERVED

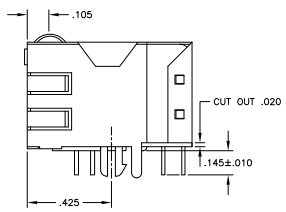
**MECHANICAL:**



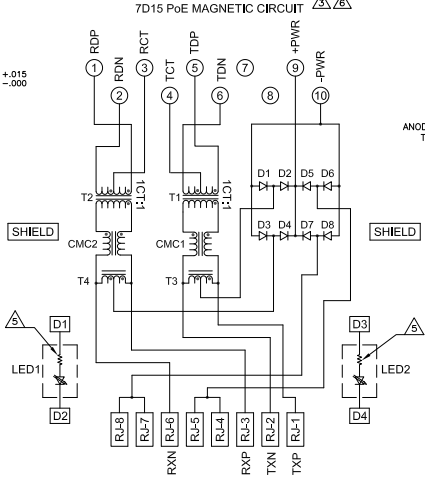
**Suggested Panel Cutout**



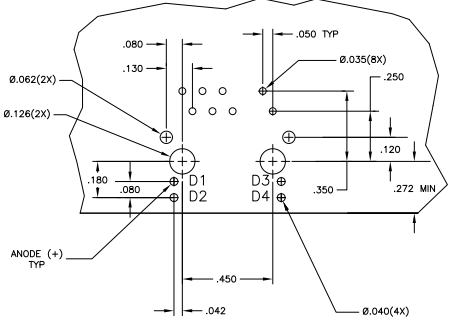
**Pin Designations**



**ELECTRICAL:**



D1-D8 = RECTIFIER DIODE  
 -FORWARD VOLTAGE, Vf = 1.2V MAX @ If = 0.5A  
 -FORWARD CURRENT, If = 0.5A MAX  
 -REVERSE VOLTAGE, Vr = 80V MAX



**Suggested PCB Layout  
 (Component Side)**

REV	DATE	DESCRIPTION	BY	CHK
AA	22			
D1		REVISED PER EDD-11-005150	21MR11	RK HMR

- MATERIALS:**
- HOUSING - THERMOPLASTIC PET POLYESTER FLAMMABILITY RATING UL 94V-0
  - SHIELD - .010" THICK, C24800 BRASS PREPLATED WITH 30μINCH MIN SEMI-BRIGHT NICKEL SOLDER TABS POST DIPPED WITH 100μINCH MIN SAC SOLDER
  - MOD JACK CONTACTS - 0.0157" x 0.018" PHOSPHOR BRONZE, 50μINCH MIN OVERALL NICKEL UNDERPLATE, WITH SELECT 50μINCH MIN HARD GOLD FINISH PLATE. SOLDER TAILS WITH 100μINCH MIN MATE TIN AND/OR SAC SOLDER DIP
  - LIGHT EMITTING DIODE(LED) - DIFFUSED EPOXY LENS, .020" x .020" CARBON STEEL WIREFRAME LEADS PRE-PLATED WITH 80μINCH SILVER OVER 40μINCH NICKEL UNDERPLATE OVER 40μINCH COPPER UNDERPLATE, POST-PLATED WITH 100μINCH MIN MATE TIN AND/OR SAC SOLDER DIP OR PURE TIN SOLDER DIP.
- RIAS JACK CAVITY CONFORMS TO FCC RULES AND REGULATIONS PART 68, SUB PART F.**
- MAGNETICS**
- IMPEDANCE 100 OHMS
  - TURNS RATIO (TXP CABLE): TX = 11, RX = 11
  - OPEN CIRCUIT INDUCTANCE (DC): 350μH MIN @ 100kHz, 0.1V RMS, 8mA DC BIAS FROM 0°C TO 70°C, TX AND RX
  - PSE CURRENT: 30mA MAX
  - PERFORMANCE @ 25°C
  - INSERTION LOSS (IL): 1.5dB MAX FROM 0.5MHz TO 100MHz
  - RETURN LOSS (RL): 30dB MIN FROM 0.5MHz TO 30MHz
  - 18-20LOG(I)/30dB MIN FROM 30.1MHz TO 60MHz
  - 12dB MIN FROM 60.1MHz TO 80MHz
  - CROSSTALK ATTENUATION: 35dB MIN FROM 0.5MHz TO 40MHz
  - 33-20\*LOG(I)/50dB MIN FROM 4.0MHz TO 100MHz
  - COMMON MODE REJECTION RATIO (CMRR): 30dB MIN FROM 0.5MHz TO 100MHz
  - ISOLATION VOLTAGE: COMPLIES WITH IEEE802.3af 2003, PARA 33.4.1, ITEM 2.
4. OPERATING TEMPERATURE: FROM 0°C TO -70°C.

- IF THE LED WITH 250 OHM RESISTORS, LED IS DRIVEN WITH 5V VOLTAGE AND THE MAX OPERATING CURRENT IS 20mA.**
- LED COLOR: DOMINANT WAVELENGTH (LD): GREEN 568 nm TYP. @ VF=5V  
 FORWARD CURRENT (IF): GREEN 12 mA TYP. @ VF=5V  
 DOMINANT WAVELENGTH (LD): YELLOW 588 nm TYP. @ VF=5V  
 FORWARD CURRENT (IF): YELLOW 13 mA TYP. @ VF=5V

- INDICATED CONNECTIONS ARE FOR NIC CONFIGURATION. THE MAGNETICS ARE SYMMETRICAL, AND ARE AUTO-IND/MODX CAPABLE.**
- TYCO ELECTRONICS LOGO, PART NUMBER, DATE CODE, COUNTRY OF ORIGIN AND AGENCY APPROVAL MARKING IN APPROXIMATE LOCATION SHOWN.**

8. THESE PARTS ARE RECOMMENDED FOR WAVE SOLDERING PROCESS. PREHEAT TEMPERATURE IS 120°C TO 160°C, 100 SECONDS TO 180 SECONDS. PEAK WAVE SOLDERING TEMPERATURE IS 260°C MAX, 10 SECONDS MAX.

GREEN	GREEN	1-6605834-1
GREEN	YELLOW	6605834-1
LED1	LED2	PART NUMBER

THIS DRAWING IS A CONTROLLED DOCUMENT.		REV	DATE	DESCRIPTION	BY	CHK
REV	DATE	DESCRIPTION	BY	CHK		
1	108-2100	1X1 MAG45(TM), MODULAR JACK, 7D15 SCHEMATIC, 7D15 PoE CIRCUIT, SHIELDED, WITH RESISTOR LEADS				
1	00779	6605834				
CUSTOMER DRAWING		DATE	NTS	SHEET	1	OF 1