

COUNT	DESCRIPTION OF REVISIONS	BY	CHKD	DATE	COUNT	DESCRIPTION OF REVISIONS	BY	CHKD	DATE
△					△				
△					△				

APPLICABLE STANDARD				
RATING	OPERATING TEMPERATURE RANGE	-25 °C TO 80 °C	STORAGE TEMPERATURE RANGE	°C TO °C
	VOLTAGE	125 V AC	CURRENT	500 mA

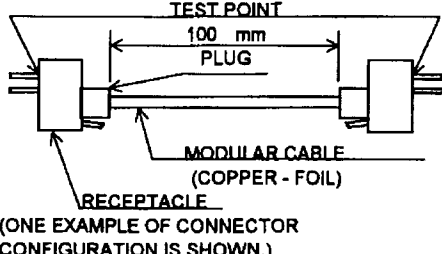
SPECIFICATIONS

ITEM	TEST METHOD	REQUIREMENTS	QT	AT
------	-------------	--------------	----	----

CONSTRUCTION

GENERAL EXAMINATION	VISUALLY AND BY MEASURING INSTRUMENT.	ACCORDING TO DRAWING.	○	○
MARKING	CONFIRMED VISUALLY.		○	○

ELECTRIC CHARACTERISTICS


CONTACT RESISTANCE	100 mA DC (OR 1000 Hz AC). MEASUREMENT POINTS SHALL BE AS FOLLOWS. 	230 mΩ MAX.	○	○
INSULATION RESISTANCE	100 V DC.	100 MΩ MIN.	○	○
VOLTAGE PROOF	500 V AC FOR 1 min.	NO FLASHOVER OR BREAKDOWN.	○	○

MECHANICAL CHARACTERISTICS

MECHANICAL OPERATION	200 TIMES INSERTIONS AND EXTRACTIONS.	① CONTACT RESISTANCE: 250 mΩ MAX. ② NO DAMAGE, CRACK AND LOOSENESS, OF PARTS.	○	—
VIBRATION	FREQUENCY 10 TO 55 Hz, SINGLE AMPLITUDE 0.75 mm, — m/s ² AT 2 h, FOR 3 DIRECTIONS.	① NO ELECTRICAL DISCONTINUITY OF 5 μs.	○	—
SHOCK	490 m/s ² DIRECTIONS OF PULSE 11 ms AT 3 TIME FOR 3 DIRECTION.	② CONTACT RESISTANCE: 250 mΩ MAX. ③ NO DAMAGE, CRACK AND LOOSENESS, OF PARTS.	○	—

ENVIRONMENTAL CHARACTERISTICS

DAMP HEAT (STEADY STATE)	EXPOSED AT 40 °C, 90 TO 95 %, 500 h.	① CONTACT RESISTANCE: 250 mΩ MAX. ② INSULATION RESISTANCE: 1 MΩ MIN. (AT HIGH HUMIDITY) ③ INSULATION RESISTANCE: 10 MΩ MIN. (AT DRY) ④ NO DAMAGE, CRACK AND LOOSENESS, OF PARTS.	○	—
RAPID CHANGE OF TEMPERATURE	TEMPERATURE -55±3 → 5 TO 35 → 85±2 → 5 TO 35°C TIME 30 TO 35→5 MAX→30 TO 35→5 MAX min UNDER 5 CYCLES.	① CONTACT RESISTANCE: 250 mΩ MAX. ② INSULATION RESISTANCE: 100 MΩ MIN. ③ NO DAMAGE, CRACK AND LOOSENESS, OF PARTS.	○	—
CORROSION SALT MIST	EXPOSED IN 5 % SALT WATER SPRAY FOR 48 h.	① CONTACT RESISTANCE: 250 mΩ MAX. ② NO DAMAGE, CRACK AND LOOSENESS.	○	—

REMARKS FOR REFERENCE ONLY Subject to change without notice Unless otherwise specified, refer to JIS C 5402.	DRAWN	DESIGNED	CHECKED	APPROVED	RELEASED
	<i>T. Kamerya</i>	<i>T. Kamerya</i>	<i>T. Watanabe</i>	<i>H. Miwa</i>	
	99.1.13	99.1.13	99.1.14	99.1.14	

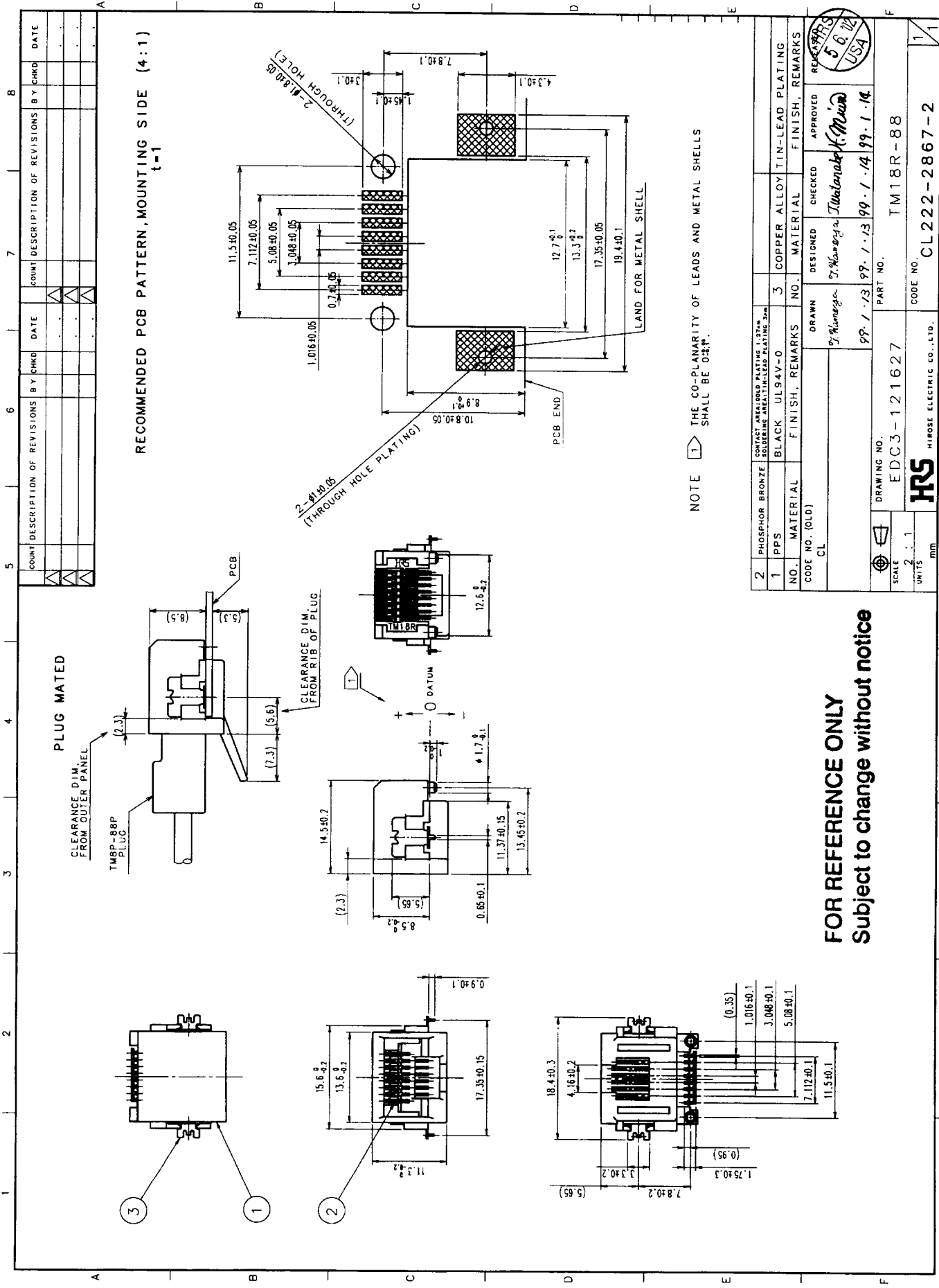
Note QT: Qualification Test AT: Assurance Test ○: Applicable Test

HRS HIROSE ELECTRIC CO., LTD.	SPECIFICATION SHEET	PART NO.	TM18R - 88
--------------------------------------	---------------------	----------	------------

CODE NO. (OLD)	DRAWING NO.	CODE NO.	1/1
CL	ELC4 - 121627	CL 222 - 2867 - 2	

TO
Q2
CHN





TO
Q2

FOR REFERENCE ONLY
Subject to change without notice

HRS
HIROSE ELECTRIC CO., LTD.

DRAWING NO. EDC3-121627
SCALE 2:1
UNITS mm

PART NO. TM18R-88

CODE NO. CL222-2867-2

FORM NO. 228



DESIGNED: 99.1.13
CHECKED: 99.1.13
APPROVED: 99.1.13