

COUNT	DESCRIPTION OF REVISIONS	BY	CHKD	DATE	COUNT	DESCRIPTION OF REVISIONS	BY	CHKD	DATE
△					△				
△					△				

APPLICABLE STANDARD									
RATING	OPERATING TEMPERATURE RANGE	-25 °C TO 80 °C			STORAGE TEMPERATURE RANGE	°C TO °C			
	VOLTAGE	125 V AC			CURRENT	500 mA			

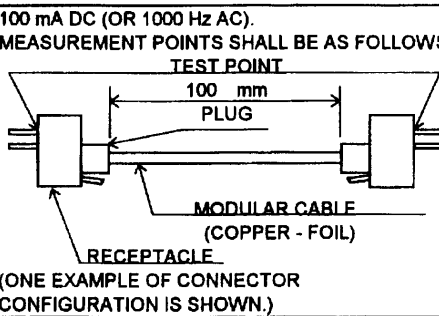
SPECIFICATIONS

ITEM	TEST METHOD	REQUIREMENTS	QT	AT
------	-------------	--------------	----	----

CONSTRUCTION

GENERAL EXAMINATION	VISUALLY AND BY MEASURING INSTRUMENT.	ACCORDING TO DRAWING.	<input type="radio"/>	<input type="radio"/>
MARKING	CONFIRMED VISUALLY.		<input type="radio"/>	<input type="radio"/>

ELECTRIC CHARACTERISTICS

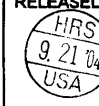
CONTACT RESISTANCE	100 mA DC (OR 1000 Hz AC). MEASUREMENT POINTS SHALL BE AS FOLLOWS. TEST POINT  RECEPTACLE (ONE EXAMPLE OF CONNECTOR CONFIGURATION IS SHOWN.)	200 mΩ MAX.	<input type="radio"/>	<input type="radio"/>
INSULATION RESISTANCE	100 V DC.	100 MΩ MIN.	<input type="radio"/>	<input type="radio"/>
VOLTAGE PROOF	500 V AC FOR 1 min.	NO FLASHOVER OR BREAKDOWN.	<input type="radio"/>	<input type="radio"/>

MECHANICAL CHARACTERISTICS

MECHANICAL OPERATION	200 TIMES INSERTIONS AND EXTRACTIONS.	① CONTACT RESISTANCE: 220 mΩ MAX. ② NO DAMAGE, CRACK AND LOOSENESS, OF PARTS.	<input type="radio"/>	<input type="radio"/>
VIBRATION	FREQUENCY 10 TO 55 Hz, SINGLE AMPLITUDE 0.75 mm, — m/s ² AT 2 h, FOR 3 DIRECTIONS.	① NO ELECTRICAL DISCONTINUITY OF 5 μs.	<input type="radio"/>	<input type="radio"/>
SHOCK	490 m/s ² DIRECTIONS OF PULSE 11 ms AT 3 TIME FOR 3 DIRECTION.	② CONTACT RESISTANCE: 220 mΩ MAX. ③ NO DAMAGE, CRACK AND LOOSENESS, OF PARTS.	<input type="radio"/>	<input type="radio"/>

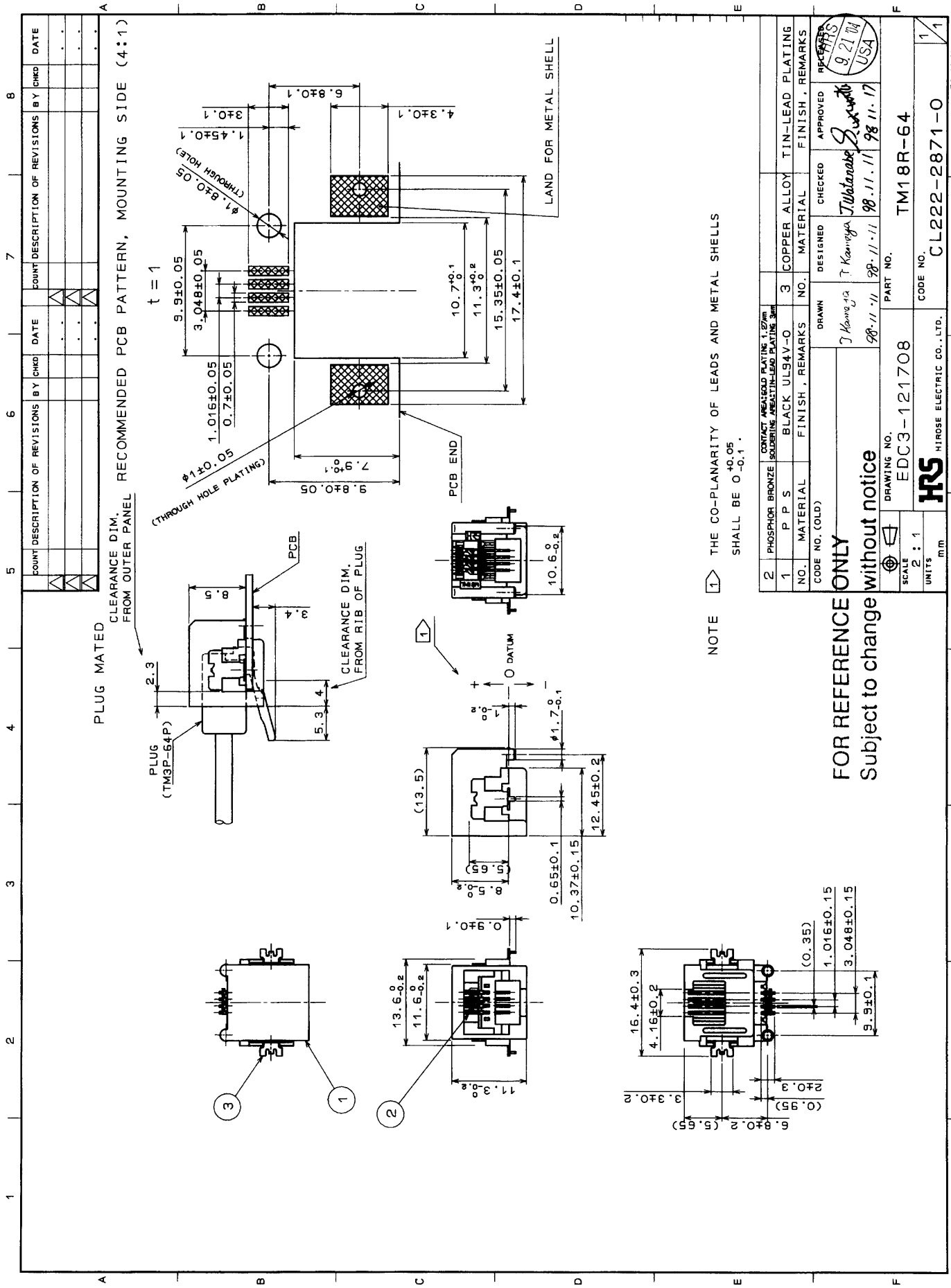
ENVIRONMENTAL CHARACTERISTICS

DAMP HEAT (STEADY STATE)	EXPOSED AT 40 °C, 90 TO 95 %, 500 h.	① CONTACT RESISTANCE: 220 mΩ MAX. ② INSULATION RESISTANCE: 1 MΩ MIN. (AT HIGH HUMIDITY) ③ INSULATION RESISTANCE: 10 MΩ MIN. (AT DRY) ④ NO DAMAGE, CRACK AND LOOSENESS, OF PARTS.	<input type="radio"/>	<input type="radio"/>
RAPID CHANGE OF TEMPERATURE	TEMPERATURE -55±3 → 5 TO 35 → 85±2 → 5 TO 35°C TIME 30 TO 35→5 MAX→30 TO 35→5 MAX min UNDER 5 CYCLES.	① CONTACT RESISTANCE: 220 mΩ MAX. ② INSULATION RESISTANCE: 100 MΩ MIN. ③ NO DAMAGE, CRACK AND LOOSENESS, OF PARTS.	<input type="radio"/>	<input type="radio"/>
CORROSION SALT MIST	EXPOSED IN 5 % SALT WATER SPRAY FOR 48 h.	① CONTACT RESISTANCE: 220 mΩ MAX. ② NO DAMAGE, CRACK AND LOOSENESS,	<input type="radio"/>	<input type="radio"/>

REMARKS FOR REFERENCE ONLY Subject to change without notice Unless otherwise specified, refer to JIS C 5402.	DRAWN	DESIGNED	CHECKED	APPROVED	RELEASED
	<i>J. Kamigai</i> 98.11.11	<i>J. Kanegai</i> 98.11.11	<i>J. Watanabe</i> 98.11.11	<i>Suzuki</i> 98.11.17	

Note QT:Qualification Test AT:Assurance Test ○:Applicable Test		PART NO. TM18R - 64	
HRS HIROSE ELECTRIC CO., LTD.	SPECIFICATION SHEET		CODE NO. CL 222 - 2871 - 0
CODE NO.(OLD) CL	DRAWING NO. ELC4 - 121708	CODE NO.	1/1

TO
Q2



PLUG MATED
CLEARANCE DIM.
FROM OUTER PANEL

PLUG (TM3P-64P)
CLEARANCE DIM.
FROM RIB OF PLUG

PCB
PCB END

LAND FOR METAL SHELL

NOTE \square THE CO-PLANARITY OF LEADS AND METAL SHELLS SHALL BE 0.05 TO 0.1

FOR REFERENCE ONLY
Subject to change without notice

NO.	PHOSPHOR BRONZE	CONTACT AREA/GOLD PLATING 1.27mm	DESIGNED	CHECKED	APPROVED	TIN-LEAD PLATING
1	P P S	BLACK UL94V-0	J Kanvaya	J Kanvaya	J Kanvaya	
2						

DATE	BY	CHKD

REVISIONS	DESCRIPTION	DATE

SCALE	DRAWING NO.	PART NO.
2 : 1	EDC3-121708	TM18R-64

UNITS	CODE NO.
mm	CL222-2871-0

FORM NO.
229

T0
Q2