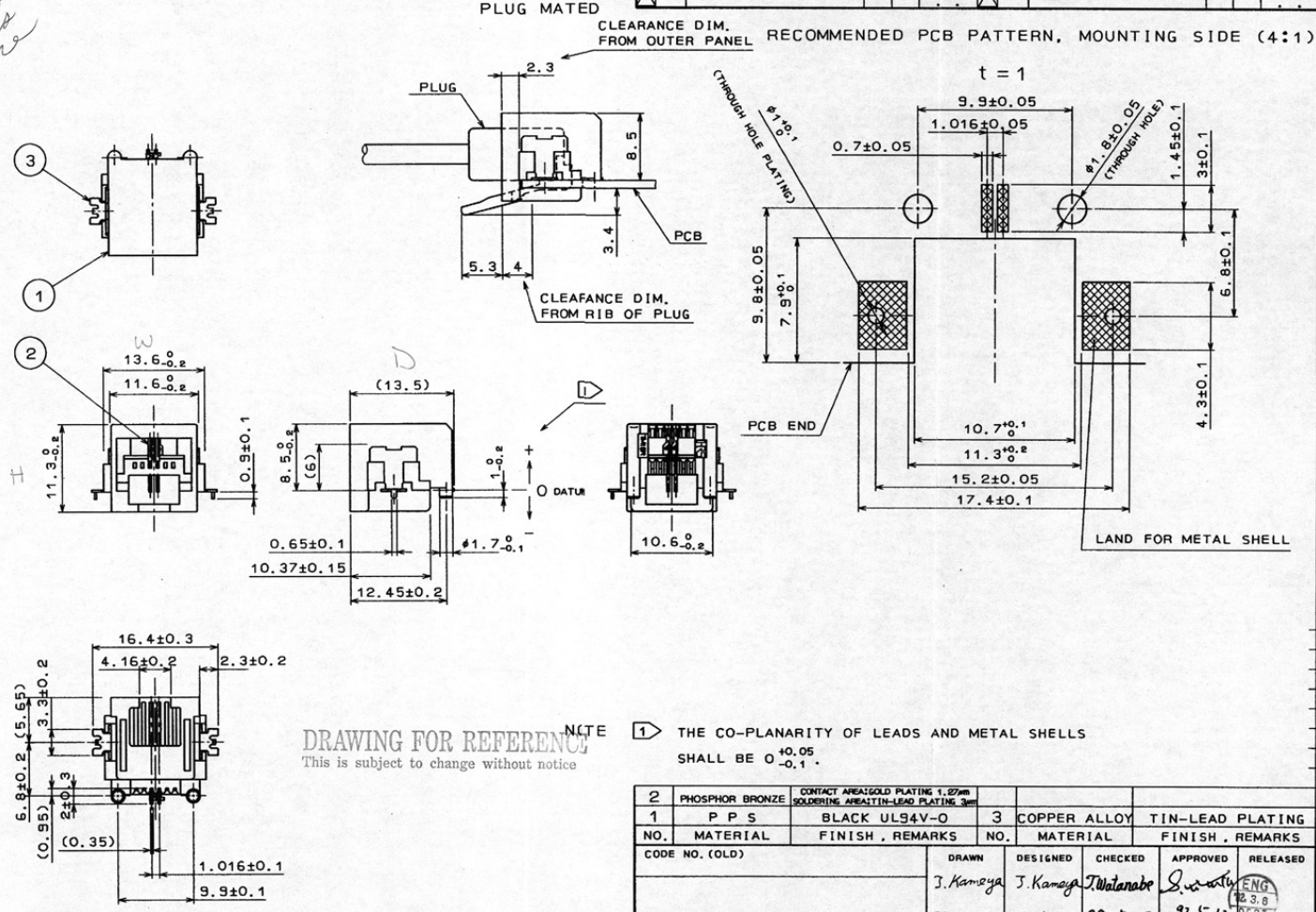


this one

COUNT	DESCRIPTION OF REVISIONS	BY	CHKD	DATE	COUNT	DESCRIPTION OF REVISIONS	BY	CHKD	DATE



DRAWING FOR REFERENCE NOTE 1 THE CO-PLANARITY OF LEADS AND METAL SHELLS SHALL BE $0^{+0.05}_{-0.1}$.
 This is subject to change without notice

2	PHOSPHOR BRONZE	CONTACT AREA GOLD PLATING 1.27μm	3	COPPER ALLOY	TIN-LEAD PLATING
1	P P S	BLACK ULS4V-O			
		SOLDERING AREA TIN-LEAD PLATING 3μm			
NO.	MATERIAL	FINISH, REMARKS	NO.	MATERIAL	FINISH, REMARKS
CODE NO. (OLD)			DRAWN	DESIGNED	CHECKED
			J. Kamaya	J. Kamaya	T. Watanabe
			97.5.12	97.5.12	97.5.12
			APPROVED	RELEASED	
					ENG 3.8 DEPT
DRAWING NO. EDC3-120713			PART NO. TM18R-62		
SCALE 2:1			CODE NO. CL222-2789-0		
UNITS m.m.			1/1		