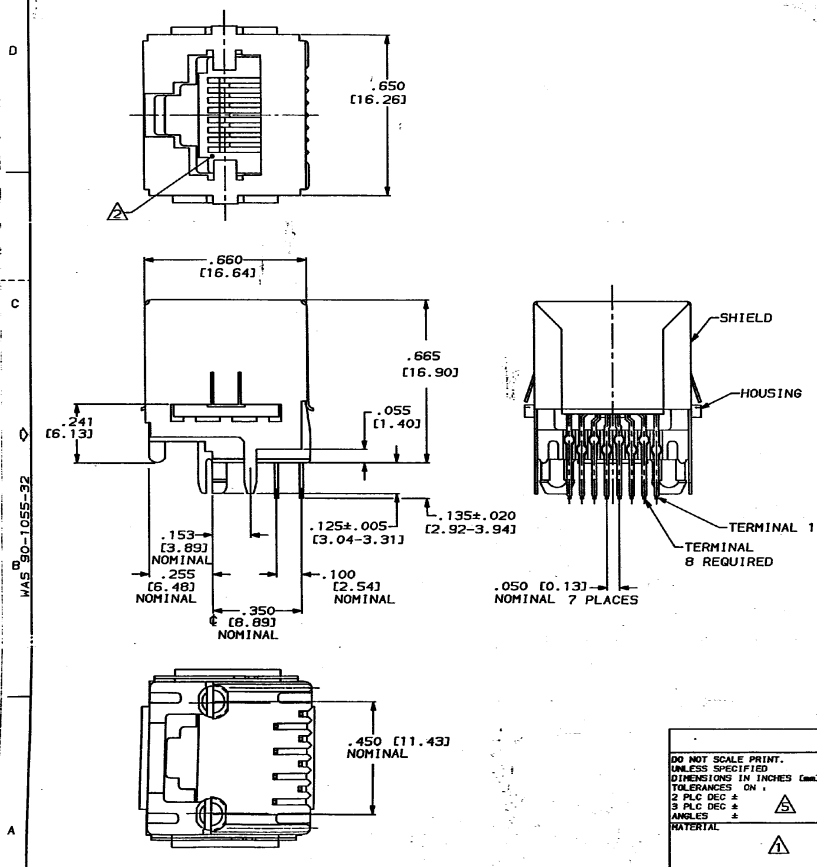
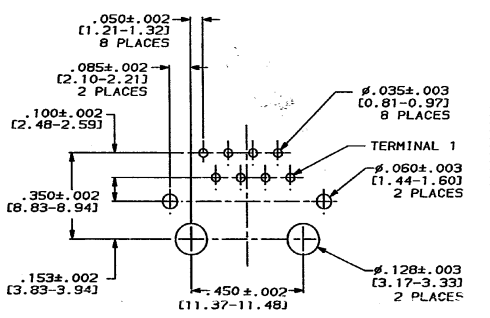


DRAWING MADE IN THIRD ANGLE PROJECTION
 THIS DRAWING IS UNPUBLISHED. RELEASED FOR PUBLICATION
 COPYRIGHT 1981 BY AMP INCORPORATED. ALL INTERNATIONAL RIGHTS RESERVED.

REV	DATE	DESCRIPTION	APPROV
AA	22	REV, ECN AA-8452	



- △ MATERIAL: HOUSING- POLYESTER HOLDING COMPOUND, BLACK; TERMINALS- .0138 [0.350] THICK PHOS BRONZE PLATED WITH .000050 [1.27um] MINIMUM THICK GOLD IN LOCALIZED AREA AND .000150 [3.81um] MINIMUM THICK TIN-LEAD IN SOLDER AREA OVER .000050 [1.27um] MINIMUM THICK NICKLE UNDERPLATE, SHIELD- COPPER ZINC ALLOY PLATED WITH .000080 [2.03um] MINIMUM THICK TIN-LEAD OVER .000100 [2.54um] MINIMUM THICK COPPER UNDERPLATE.
- △ CAVITY CONFORMS TO FCC RULES AND REGULATIONS PART 68 AND REA BULLETIN 345-81, PE-76 SPECIFICATION FOR MODULAR TELEPHONE HARDWARE.
- 3. FOR APPLICATION INFORMATION SEE AMP SPECIFICATION 114-2048.
- 4. FOR PERFORMANCE REQUIREMENTS SEE AMP SPECIFICATION 108-1163.
- △ DIMENSIONS ARE MAXIMUM UNLESS OTHERWISE SPECIFIED.
- 6. BULK PACKAGED IN A TRAY.
- 7. DIMENSIONS IN BRACKETS [] ARE IN MILLIMETERS.



CAD DRAWINGS
 THESE DRAWINGS WERE CREATED ON A COMPUTER AIDED DESIGN (CAD) SYSTEM. NO CHANGE IN DIMENSIONS OF THE DRAWING SHALL BE MADE ON THE CAD SYSTEM.

DO NOT SCALE PRINT. UNLESS SPECIFIED DIMENSIONS IN INCHES (mm) TOLERANCES ON:		DR RB. INZERILLO 12-03-91	557484-1 PART NO	
2 PL DEC ±	△	CHK D. HUSSEY 3-24-92	AMP AMP Incorporated Harrisburg, PA 17105-3608	
3 PL DEC ±	△	APPR J. TONEY 4-2-92	NAME MODULAR JACK ASSEMBLY, TOP ENTRY, 8 POSITION, FLANGELESS, SHIELDED, WITH PANEL STOPS, PANEL & PCB GROUNDS	
ANGLES ±	△	APPRO J. TONEY 4-2-92	PRODUCT SPEC	
MATERIAL	△	APPLICATION SPEC	SIZE C 00779	DRAWING NO 557484
FINISH	△	WEIGHT	SCALE 4:1	SHEET 1 OF 1

CAD CUSTOMER DRAWING

AMP 1-971-B REV 9-82