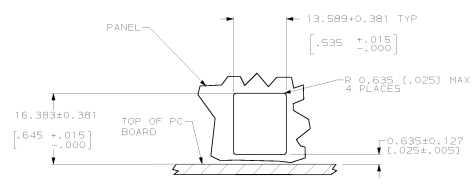
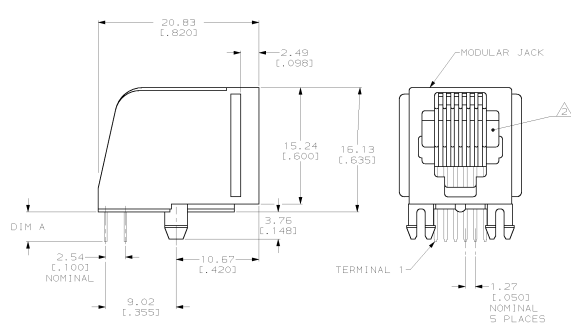
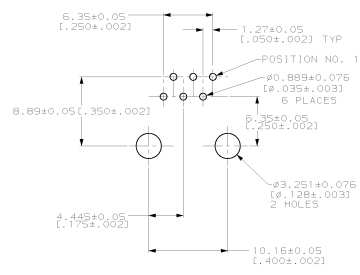
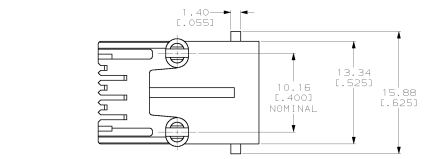


| REV | DATE | DESCRIPTION | BY | CHK | APP |
|-----|------|-----------------------------|----|-----|-----|
| AA | 22 | | | | |
| 1 | | REVISIONS | | | |
| 2 | | REVISED PER EC 0511-0016-02 | | | |

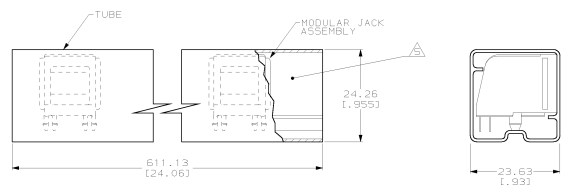


PANEL CUTOUT
SCALE 2:1

- ⚠ MATERIAL: HOUSING - PBT POLYESTER
 TERMINAL - 0.35 [1.014] THICK PHOS-BRONZE PLATED WITH 1.27µm [1.00050] THICK HARD GOLD IN LOCALIZED GOLD PLATE AREA AND 2.03µm [1.00080] THICK TIN-LEAD IN SOLDER AREA OVER 1.27µm [1.00050] THICK NICKEL UNDERPLATE.
- ⚠ CAVITY CONFORMS TO FCC RULES AND REGULATIONS PART 68 AND REA BULLETIN 345-81, PE-76 SPECIFICATION FOR MODULAR TELEPHONE HARDWARE.
- ⚠ DIMENSIONS ARE MAXIMUM UNLESS OTHERWISE SPECIFIED.
- ⚠ BULK PACKAGED IN A TRAY.
- ⚠ PACKAGED 36 ASSEMBLIES PER TUBE WITH BOTH ENDS CLOSED. SEE DETAIL B.
- ⚠ TERMINALS FOR 520250-1, -2, -4, -8, -9, AND -1/1 LOCATED IN CENTER POSITIONS.



PRINTED CIRCUIT BOARD LAYOUT
CIRCUIT SIDE SHOWN



DETAIL B
SCALE 2:1

SUPERSEDED BY 520250-9
 SUPERSEDED BY 520250-3
 SUPERSEDED BY 520250-2

| DIM A | PACKAGED | COLOR | TERMINALS | PART NUMBER |
|-------------------------|----------|-------------|-----------|-------------|
| 2.16-2.67 [1.085-.1105] | ⚠ | BLACK | 4 | 1-520250-1 |
| | | BLACK | 4 | 520250-9 |
| | | PEBBLE GRAY | 4 | 520250-8 |
| | | BLACK | 6 | 520250-7 |
| | | PEBBLE GRAY | 4 | 520250-4 |
| | | BLACK | 6 | 520250-3 |
| | | BLACK | 4 | 520250-2 |
| | | BLACK | 2 | 520250-1 |

| | | | | | |
|--|--|---|-----------------|-----------------------|-----------------|
| THIS DRAWING IS A CONTROLLED DOCUMENT. | | DATE | BY | APPROVED | REVISED |
| DRAWN BY: [Signature] | | DATE: [Date] | BY: [Signature] | APPROVED: [Signature] | REVISED: [Date] |
| MATERIAL: [Material] | | TVC Electronics Harrisburg, PA 17105-3608 | | | |
| PART: [Part] | | MODULAR JACK ASSEMBLY, 6 POSITION, SIDE ENTRY, FLANGELESS, WITH PANEL STOPS | | | |
| PART: [Part] | | THE USE OF THIS DRAWING IS LIMITED TO THE PROJECT AND QUANTITY SPECIFIED. | | | |
| PART: [Part] | | A1 00778 520250 | | | |
| PART: [Part] | | CUSTOMER DRAWING | | | |