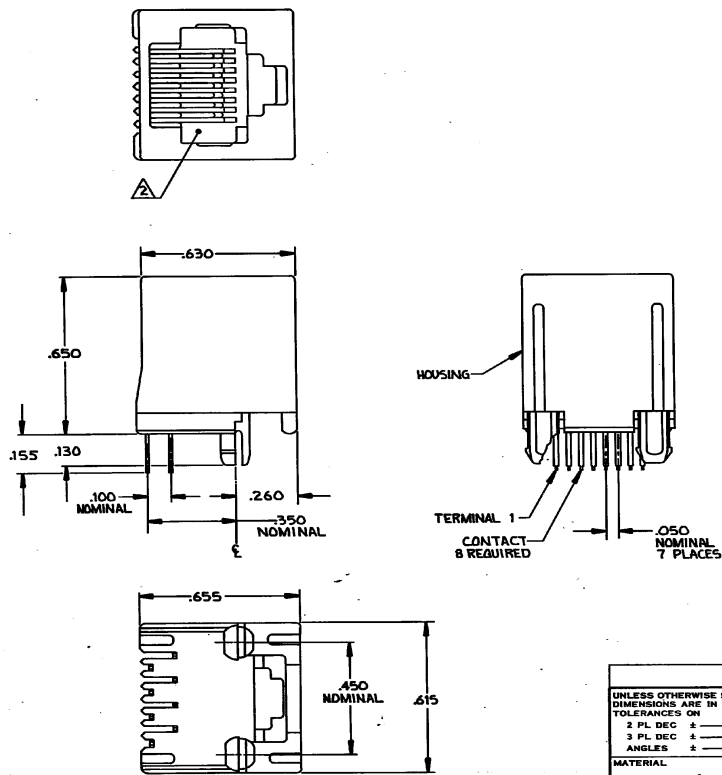


DRAWING MADE IN THIRD ANGLE PROJECTION
 THIS DRAWING IS UNPUBLISHED. RELEASED FOR PUBLICATION
 © COPYRIGHT 1989 BY AMP INCORPORATED, HARRISBURG, PA. ALL INTERNATIONAL RIGHTS RESERVED. AMP PRODUCTS MAY BE COVERED BY U.S. AND FOREIGN PATENTS AND/OR PATENTS PENDING.

LOC	DIST	ZONE	LYR	REVISIONS	DATE	APPD
AA	22			B REVISED; ECM AA-8120	3/24/85	

WAS 89-1056-D-1-2



- ⚠ MATERIAL: HOUSING-PBT POLYESTER, BLACK. TERMINAL-.0138 THICK PHOS BRONZE PLATED WITH .000500 THICK HARD GOLD IN LOCALIZED GOLD PLATE AREA AND .000580 THICK TIN-LEAD IN SOLDER AREA OVER .000050 THICK NICKEL UNDERPLATE.
- ⚠ CAVITY CONFORMS TO FCC RULES AND REGULATIONS PART 68 AND REA BULLETIN 345-81, PE-76 SPECIFICATION FOR MODULAR TELEPHONE HARDWARE.
- 3. FOR APPLICATION INFORMATION SEE AMP SPECIFICATION 114-2048.
- 4. FOR PERFORMANCE REQUIREMENTS SEE AMP SPECIFICATION 108-1163.
- 5. ALL DIMENSIONS SHOWN ARE MAXIMUM UNLESS OTHERWISE SPECIFIED.
- ⚠ BULK PACKAGED IN A TRAY.
- ⚠ PACKAGED 30 PER TUBE.

⚠	556416 - 2
⚠	556416 - 1
PACKAGED	PART NO

UNLESS OTHERWISE SPECIFIED DIMENSIONS ARE IN INCHES		DR <i>Sturman</i> 3-8-89		AMP INCORPORATED Harrisburg, Pa. 17105	
TOLERANCES ON	CHK <i>St. Top</i> 3-13-89	NAME MODULAR JACK ASSEMBLY, TOP ENTRY, 8 POSITION, FLANGELESS, W/O PANEL STOPS.			
2 PL DEC ±	APPD <i>Steve Reed</i> 3-13-89				
3 PL DEC ±	PRODUCT SPEC				
ANGLES ±	FINISH ⚠	APPLICATION SPEC	SIZE C	FSCM NO 00779	DRAWING NO 556416
MATERIAL ⚠	WEIGHT	SCALE 4:1	SHEET 1 of 1		

CUSTOMER DRAWING

AMP 1471-7 REV 1-86

556416