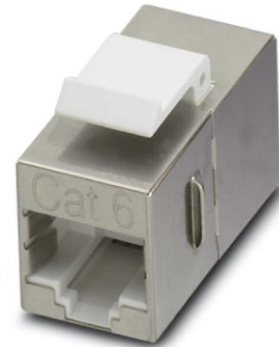


VS-08-BU-RJ45-6-MOD/BU

Order No.: 1653155

<http://eshop.phoenixcontact.de/phoenix/treeViewClick.do?UID=1653155>RJ45 socket insert, modular (Keystone), CAT6 (Link test), 8-position,
shielded, socket on socket**Ethernet**

Commercial data	
EAN	4017918970079
Pack	5 pcs.
Customs tariff	85366990
Weight/Piece	0.00915 KG
Catalog page information	Page 196 (PC-2009)

Product notesWEEE/RoHS-compliant since:
12/01/2005

<http://www.download.phoenixcontact.com>
Please note that the data given here has been taken from the online catalog. For comprehensive information and data, please refer to the user documentation. The General Terms and Conditions of Use apply to Internet downloads.

Technical data**Mechanical characteristics**

Number of positions	8
Number of slots	1
Shielded	Yes
Insertion/withdrawal cycles	≥ 750
Type of connection	Socket

Ambient temperature (operation)	-40 °C ... 70 °C
---------------------------------	------------------

Material data

Inflammability class acc. to UL 94	V0
Contact carrier material	ABS
Contact material	Copper alloy
Contact surface material	Gold over nickel
Degree of protection	IP20

Electrical characteristics

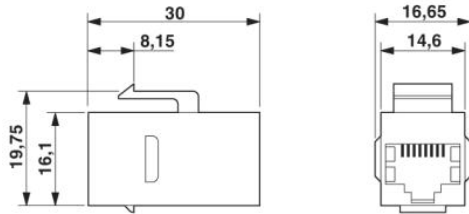
Number of positions	8
Transmission characteristics (category)	CAT6 Link
Rated current	1.5 A
Pollution degree	2

Accessories

Item	Designation	Description
General		
1689433	VS-08-A-RJ45/MOD-1-IP20	RJ45 panel mounting frame, 1x, IP20, for modular socket inserts (Keystone), without mounting screws
1689080	VS-08-A-RJ45/MOD-1-IP67	RJ45 panel mounting frame, IP67, for modular socket inserts (Keystone), for square panel cutout, with grommet, without mounting screws, color: gray
1658642	VS-08-A-RJ45/MOD-1-IP67-BK	RJ45 panel mounting frame, IP67, for modular socket inserts (Keystone), for square panel cutout, with grommet, without mounting screws, color: black
1689844	VS-08-A-RJ45/MOD-1-R-IP67	RJ45 panel mounting frame, IP67, for modular socket inserts (Keystone), for round panel cutout, with grommet, with thread and union nut, color: gray
1658053	VS-08-A-RJ45/MOD-1-R-IP67 BK	RJ45 panel mounting frame, IP67, for modular socket inserts (Keystone), for round panel cutout, with grommet, with thread and union nut, color: black
1652868	VS-08-A-S-RJ45/MOD-1-IP67	RJ45 panel mounting frame, IP67, irradiated for welding applications, for modular socket inserts (Keystone), for square panel cutout, with grommet, without mounting screws
1654772	VS-08-A-S-RJ45/MOD-1-R-IP67	RJ45 panel mounting frame, IP67, irradiated for welding applications, for modular socket inserts (Keystone), for round panel cutout, with grommet, with thread and union nut

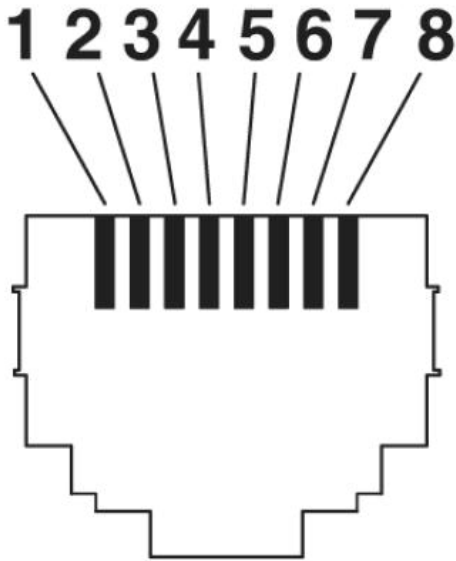
Diagrams/Drawings

Dimensioned drawing



RJ45 socket insert, keystone

Schematic diagram



Address

PHOENIX CONTACT Deutschland GmbH
Flachsmarktstr. 8
32825 Blomberg, Germany
Phone +49 5235 3 12000
Fax +49 5235 3 41200
<http://www.phoenixcontact.de>



© 2010 Phoenix Contact
Technical modifications reserved;