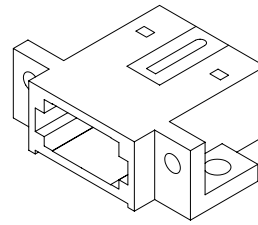
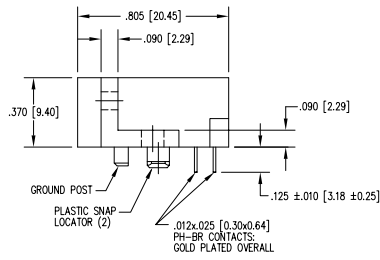
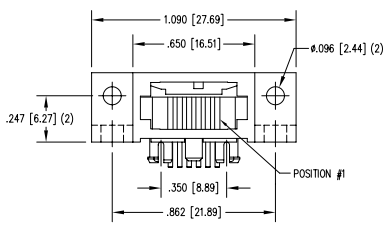
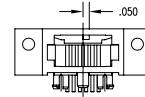


DATE	REV	ECN	APP'D. BY
-	A3	5302	-
-	A4	5970	-
1-20-06	A5	7451	JM
4-11-06	A6	7579	TRM

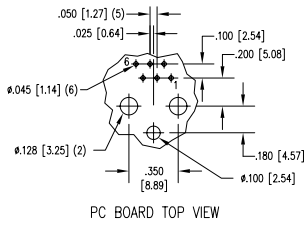


NOTES:

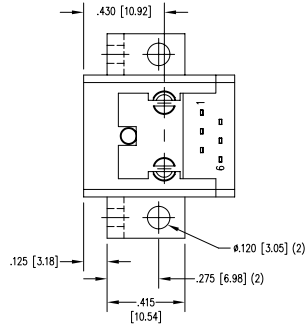
- CONNECTOR MATERIALS:
HOUSING: THERMOPLASTIC UL94 V-0
SHIELD: DIE CAST ALLOY
CONTACTS: COPPER ALLOY
SHIELD PLATING: TIN
CONTACT PLATING: SELECTIVE GOLD IN CONTACT AREA
SEE CHART FOR PART NUMBER
- FOR PRODUCT SPECIFICATIONS SEE PRO26-01.
- TOLERANCES ARE ±.006 (0.15) UNLESS OTHERWISE NOTED.



DIMENSIONS FOR KEY-5

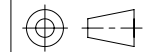


PC BOARD TOP VIEW



50 MICRO-INCHES [1.27um]	SS-610606-LF-P-5-A58
30 MICRO-INCHES [0.76um]	SS-610606-LF-P-5-4/6
CONTACT PLATING IN MATING AREA	PART NUMBER

THIRD ANGLE PROJECTION



DO NOT SCALE DRAWING
DRAWING IS SUBJECT TO CHANGE WITHOUT NOTICE
DIMENSIONS: INCHES (METRIC)
UNLESS OTHERWISE SPECIFIED
TOLERANCES ARE ±.005 [0.13]
ANGLES ARE ± 1°
SHEET NO. 1 OF 1

Bel Stewart Connector
11118 Susquehanna Trail South
Glen Rock, PA 17327-9199
(717) 235-7512 Fax: (717) 235-7954 <http://www.stewartconnector.com>

TITLE: 6 CONTACT COMPU-SHIELD JACK
#4-40 TAP ON .096 HOLES AND #6-32 TAP ON .120 HOLES

DRN BY: BK	DATE: 2-14-95
APPD BY: JW	DATE: 2-14-95
DWG NO. CT610013	REV: A6



REV. 6/2/05

2

1

AutoCAD