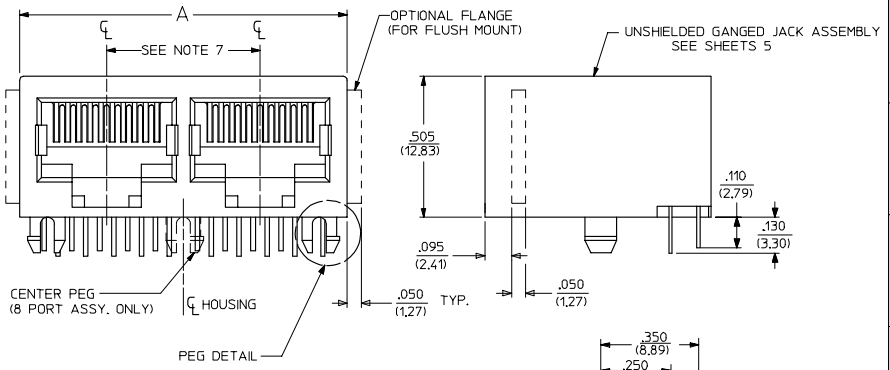
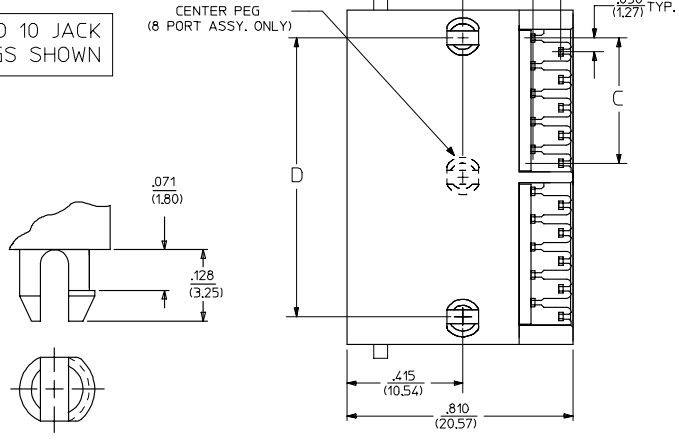


- NOTES:
- 1) MATERIAL:
HOUSING: GLASS FILLED NYLON, UL94V-0, COLOR: BLACK
INSULATOR: GLASS FILLED NYLON, UL94V-0, COLOR: BLACK
TERMINALS: PHOSPHOR BRONZE: .012/(0.30) THICK
 - 2) FINISH:
TERMINALS:
SELECT GOLD IN CONTACT AREA: 50 MICRONS MIN.
*SELECT TIN IN PC TAIL AREA: 100 MICRONS MIN.
WITH OVERALL NICKEL UNDERPLATE: 50 MICRONS MIN.
*THE PRIMARY SHIPPING CARTON WILL BE LABELED 'COMPLIANT TO ROHS DIRECTIVE 2002/95/EC AND ELV ANNEX II OF DIRECTIVE 2000/53/EC'. CARTONS WITHOUT THIS LABEL MAY CONTAIN PRODUCT WITH TIN-LEAD IN THE PC TAIL AREA.
 - 3) PRODUCT SPECIFICATION AND PROCESSING PARAMETERS: PS-43223-001.
 - 4) ASSEMBLIES TO BE PACKAGED IN TRAYS, UNLESS OTHERWISE SPECIFIED.
 - 5) SEE SHEETS 7-9 FOR P.C. BOARD LAYOUTS.
 - 6) SEE SHEET 3 FOR THE SHIELDED JACK ASSEMBLY.
 - 7) FOR 6 CIRCUIT JACKS CENTERLINE TO CENTERLINE SPACING IS .448/(11.38).
FOR 8 CIRCUIT JACKS CENTERLINE TO CENTERLINE SPACING IS .550/(13.97).
 - 8) ALL UNTOLERANCED DIMENSIONS ARE SHOWN FOR REFERENCE ONLY.



2 PORT 8 LOADED 10 JACK
W/ SNAP-FIT PEGS SHOWN



PEG DETAIL
SCALE: 8:1

6 CIRCUIT HOUSING				
CIRCUIT SIZE	NO. OF PORTS	DIM. A	DIM. C	DIM. D
6	2	.985 (25.02)	.250 (6.35)	.848 (21.54)
4	2	.985 (25.02)	.150 (3.81)	.848 (21.54)
2	2	.985 (25.02)	.050 (1.27)	.848 (21.54)
6	3	1.433 (36.40)	.250 (6.35)	1.296 (32.92)
4	3	1.433 (36.40)	.150 (3.81)	1.296 (32.92)
2	3	1.433 (36.40)	.050 (1.27)	1.296 (32.92)
6	4	1.881 (47.78)	.250 (6.35)	1.744 (44.30)
4	4	1.881 (47.78)	.150 (3.81)	1.744 (44.30)
2	4	1.881 (47.78)	.050 (1.27)	1.744 (44.30)
6	5	2.329 (59.16)	.250 (6.35)	2.192 (55.68)
4	5	2.329 (59.16)	.150 (3.81)	2.192 (55.68)
2	5	2.329 (59.16)	.050 (1.27)	2.192 (55.68)
6	6	2.777 (70.54)	.250 (6.35)	2.640 (67.06)
4	6	2.777 (70.54)	.150 (3.81)	2.640 (67.06)
2	6	2.777 (70.54)	.050 (1.27)	2.640 (67.06)
6	8	3.673 (93.29)	.250 (6.35)	3.536 (89.81)
4	8	3.673 (93.29)	.150 (3.81)	3.536 (89.81)
2	8	3.673 (93.29)	.050 (1.27)	3.536 (89.81)

8 CIRCUIT HOUSING				
CIRCUIT SIZE	NO. OF PORTS	DIM. A	DIM. C	DIM. D
10	2	1.200 (30.48)	.250 (6.35)	1.000 (25.40)
8	2	1.200 (30.48)	.150 (3.81)	1.000 (25.40)
6	2	1.200 (30.48)	.050 (1.27)	1.000 (25.40)
10	3	1.750 (44.45)	.250 (6.35)	1.550 (39.37)
8	3	1.750 (44.45)	.150 (3.81)	1.550 (39.37)
6	3	1.750 (44.45)	.050 (1.27)	1.550 (39.37)
10	4	2.300 (58.42)	.250 (6.35)	2.100 (53.34)
8	4	2.300 (58.42)	.150 (3.81)	2.100 (53.34)
4	4	2.300 (58.42)	.050 (1.27)	2.100 (53.34)
10	5	2.850 (72.39)	.250 (6.35)	2.650 (67.31)
8	5	2.850 (72.39)	.150 (3.81)	2.650 (67.31)
6	5	2.850 (72.39)	.050 (1.27)	2.650 (67.31)
10	6	3.400 (86.36)	.250 (6.35)	3.200 (81.28)
8	6	3.400 (86.36)	.150 (3.81)	3.200 (81.28)
6	6	3.400 (86.36)	.050 (1.27)	3.200 (81.28)
10	8	4.500 (114.30)	.250 (6.35)	4.300 (109.22)
8	8	4.500 (114.30)	.150 (3.81)	4.300 (109.22)
6	8	4.500 (114.30)	.050 (1.27)	4.300 (109.22)

ADD PCB THICKNESS EC NO. UCP2005-2739 DRAWN: SCHMIDT 2005/06/20 CHKD: ELHAG 2005/06/22 APPR: SMITH 2005/06/23	QUALITY SYMBOLS	GENERAL TOLERANCES (UNLESS SPECIFIED)	SCALE 4:1	DESIGN UNITS INCH	THIRD ANGLE PROJECTION	REVISE ON CAD ONLY
	4 PLACES ± --- ± --- 3 PLACES ± --- ± --- 2 PLACES ± --- ± --- 1 PLACE ± --- ± ---	mm INCH	DIMENSION STYLE IN/MM	DRAWN BY JTR DATE 10/18/1993	CHECKED BY JTR DATE 10/18/1993	TITLE LOW PROFILE GANGED, RIGHT ANGLE MODULAR JACK ASSEMBLY
DESCRIPTION	ANGULAR ±1/2°	DRAFT WHERE APPLICABLE	APPROVED BY RAS DATE 10/18/1993	MATERIAL NO. SEE SHEET 5	DOCUMENT NO. SDA-43223	SHEET NO. 1 OF 9
THIS DRAWING CONTAINS INFORMATION THAT IS PROPRIETARY TO MOLEX INCORPORATED AND SHOULD NOT BE USED WITHOUT WRITTEN PERMISSION						

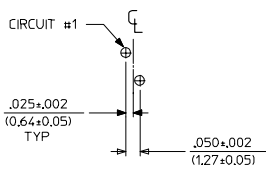
9	J1
8	J1
7	J1
6	H
5	H
4	J
3	J
2	J
1	J1
SH	REV

FLUSH MOUNT (UNSHIELDED)						FLANGELESS (UNSHIELDED)					
ASSEMBLY NUMBER	CONNECTOR SIZE	NUMBER OF CIRCUITS	NUMBER OF PORTS	PACKAGING STYLE	PACKAGING SPECIFICATION	ASSEMBLY NUMBER	CONNECTOR SIZE	NUMBER OF CIRCUITS	NUMBER OF PORTS	PACKAGING STYLE	PACKAGING SPECIFICATION
43223-6001	6	6	2	TRAY	PK-43249-004	43223-6101	6	6	2	TRAY	PK-43249-004
43223-6004	6	6	3			43223-6104	6	6	3		
43223-6007	6	6	4			43223-6107	6	6	4		
43223-6010	6	6	5			43223-6110	6	6	5		
43223-6013	6	6	6			43223-6113	6	6	6		
43223-6019	6	6	8			43223-6119	6	6	8		
43223-6022	6	4	2			43223-6122	6	4	2		
43223-6025	6	4	3			43223-6125	6	4	3		
43223-6028	6	4	4			43223-6128	6	4	4		
43223-6031	6	4	5			43223-6131	6	4	5		
43223-6034	6	4	6			43223-6134	6	4	6		
43223-6040	6	4	8			43223-6140	6	4	8		
43223-6043	6	2	2			43223-6143	6	2	2		
43223-6046	6	2	3			43223-6146	6	2	3		
43223-6049	6	2	4			43223-6149	6	2	4		
43223-6052	6	2	5			43223-6152	6	2	5		
43223-6055	6	2	6			43223-6155	6	2	6		
43223-6058	6	2	8	TRAY	PK-43249-004	43223-6158	6	2	8	TRAY	PK-43249-004
43223-8001	8	10	2	TRAY	PK-43249-004	43223-8101	8	10	2	TRAY	PK-43249-004
43223-8004	8	10	3			43223-8104	8	10	3		
43223-8007	8	10	4			43223-8107	8	10	4		
43223-8010	8	10	5			43223-8110	8	10	5		
43223-8013	8	10	6			43223-8113	8	10	6		
43223-8019	8	10	8			43223-8119	8	10	8		
43223-8022	8	8	2			43223-8122	8	8	2		
43223-8025	8	8	3			43223-8125	8	8	3		
43223-8028	8	8	4			43223-8131	8	8	5		
43223-8031	8	8	5			43223-8140	8	8	4		
43223-8034	8	8	6			43223-8149	8	8	5		
43223-8040	8	8	8			43223-8158	8	8	6		
43223-8041	8	4	5			43223-8176	8	8	8	TRAY	PK-43249-004
43223-8042	8	6	3	TRAY	PK-43249-004	43223-8191	8	6	2	TUBE	PK-43249-005
						43223-8192	8	4	4	TUBE	PK-43249-005
						43223-8193	8	4	3	TUBE	PK-43249-005
						43223-8195	8	8	2	TUBE	PK-43249-005
						43223-8196	8	8	3	TUBE	PK-43249-005
						43223-8197	8	8	4	TUBE	PK-43249-005

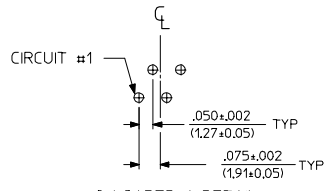
FLANGELESS (SHIELDED)							
ASSEMBLY NUMBER	DIMENSION 'B'	CONNECTOR SIZE	NUMBER OF CIRCUITS	NUMBER OF PORTS	NUMBER OF REAR SHIELD GROUND TABS	PACKAGING STYLE	PACKAGING SPECIFICATION
43223-8128	.180	8	8	2	1		
43223-8146	.180	8	8	4	3	TRAY	PK-44150-004
43223-8164	.180	8	8	6	5		
43223-8182	.180	8	8	8	7		
43223-8185	.180	8	8	8	1		
43223-8188	.180	8	8	4	1		
43223-8194	.180	8	2	8	7	TRAY	PK-44150-004
43223-8301	.145	8	8	2	1	TRAY	PK-44150-004
43223-8302	.145	8	8	4	3		
43223-8303	.145	8	8	6	5		
43223-8304	.145	8	8	8	7		
43223-8305	.145	8	8	8	1		
43223-8306	.145	8	8	4	1		
43223-8307	.145	8	2	8	7	TRAY	PK-44150-004

SNAP FIT PEG VERSIONS

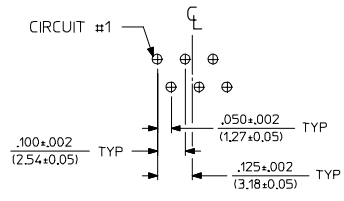
SEE SHEET ONE IEC NO. UCP2004-0870 DRAWN: LSCHMIDT 2004/01/02 CHKD: LSCHMIDT 2004/01/02 APPR: F SMITH 2004/01/03	QUALITY SYMBOLS	GENERAL TOLERANCES (UNLESS SPECIFIED)	SCALE 4:1	DESIGN UNITS INCH	THIRD ANGLE PROJECTION	REVISE ON CAD ONLY
	▽.0	4 PLACES ±.005 ±.005	DIMENSION STYLE IN/MM	LOW PROFILE RIGHT ANGLE GANGED MODULAR JACK ASSEMBLY		
	▽.0	3 PLACES ±.005 ±.005	DRAWN BY JTR DATE 10/12/1993	MOLEX INCORPORATED		
		2 PLACES ±.005 ±.005	CHECKED BY JTR DATE 10/12/1993	MATERIAL NO. SEE CHART DOCUMENT NO. SDA-43223 SHEET NO. 5 OF 9		
	1 PLACE ±.005 ±.005	ANGULAR ±1/2°	APPROVED BY RAS DATE 10/12/1993	THIS DRAWING CONTAINS INFORMATION THAT IS PROPRIETARY TO MOLEX INCORPORATED AND SHOULD NOT BE USED WITHOUT WRITTEN PERMISSION		
		DRAFT WHERE APPLICABLE				
		MUST REMAIN WITHIN DIMENSIONS				



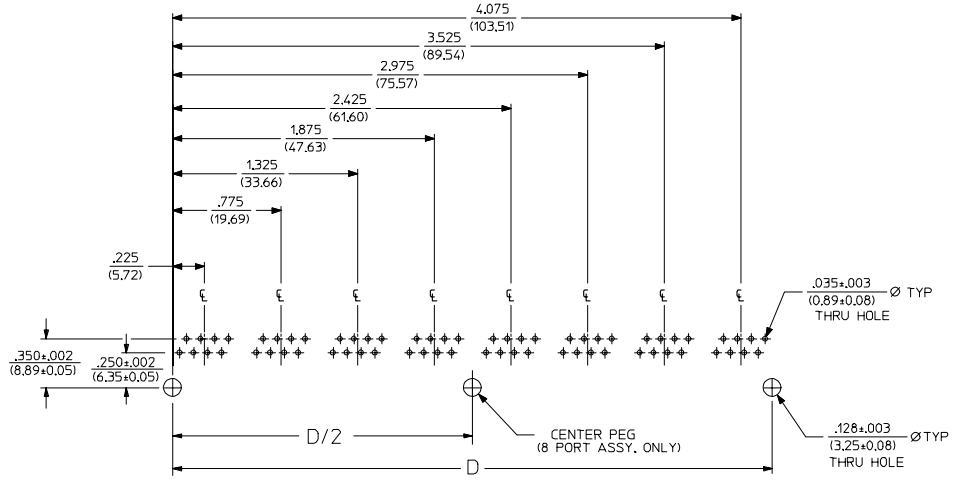
8 LOADED 2 DETAIL
SCALE: 4/1



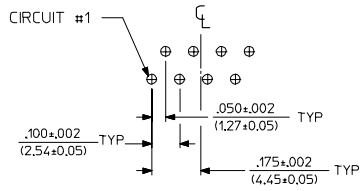
8 LOADED 4 DETAIL
SCALE: 4/1



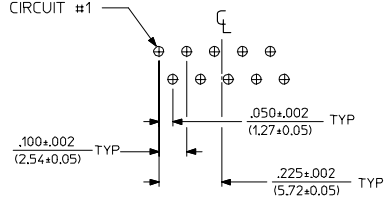
8 LOADED 6 DETAIL
SCALE: 4/1



SUGGESTED P.C. BOARD LAYOUT
COMPONENT SIDE OF BOARD
8 PORT, 8 LOADED 8
(SNAP-FIT & PRESS-FIT VERSIONS)



8 LOADED 8 DETAIL
SCALE: 4/1



8 LOADED 10 DETAIL
SCALE: 4/1

NOTES:
1. RECOMMENDED PCB THICKNESS: .062±.005(1.57±0.13)

NUMBER OF PORTS	DIM. D
2	1.000 (25.40)
3	1.550 (39.37)
4	2.100 (53.34)
5	2.650 (67.31)
6	3.200 (81.28)
8	4.300 (109.32)

ADD PCB THICKNESS EC NO. UCP2005-2739 DRAWN: SCHMIDT 2005/06/20 CHKD: ELHAG 2005/06/22 APPR: F SMITH 2005/06/23	QUALITY SYMBOLS ◻ 0 ◻ 0	GENERAL TOLERANCES (UNLESS SPECIFIED) 4 PLACES ± --- ± --- 3 PLACES ± --- ± .005 2 PLACES ± .13 ± .01 1 PLACE ± 0.25 ± --- ANGULAR ±1/2°	SCALE 2:1 DESIGN UNITS INCH DIMENSION STYLE IN/MM DRAWN BY JTR DATE 10/12/1993 CHECKED BY JTR DATE 10/12/1993	THIRD ANGLE PROJECTION REVISE ON CAD ONLY TITLE LOW PROFILE RIGHT ANGLE GANGED MODULAR JACK ASSEMBLY MOLEX INCORPORATED MATERIAL NO. SEE SHT 5.6 DOCUMENT NO. SDA-43223 SHEET NO. 8 OF 9
	DRAFT WHERE APPLICABLE MUST REMAIN WITHIN DIMENSIONS	APPROVED BY RAS DATE 10/12/1993 THIS DRAWING CONTAINS INFORMATION THAT IS PROPRIETARY TO MOLEX INCORPORATED AND SHOULD NOT BE USED WITHOUT WRITTEN PERMISSION		