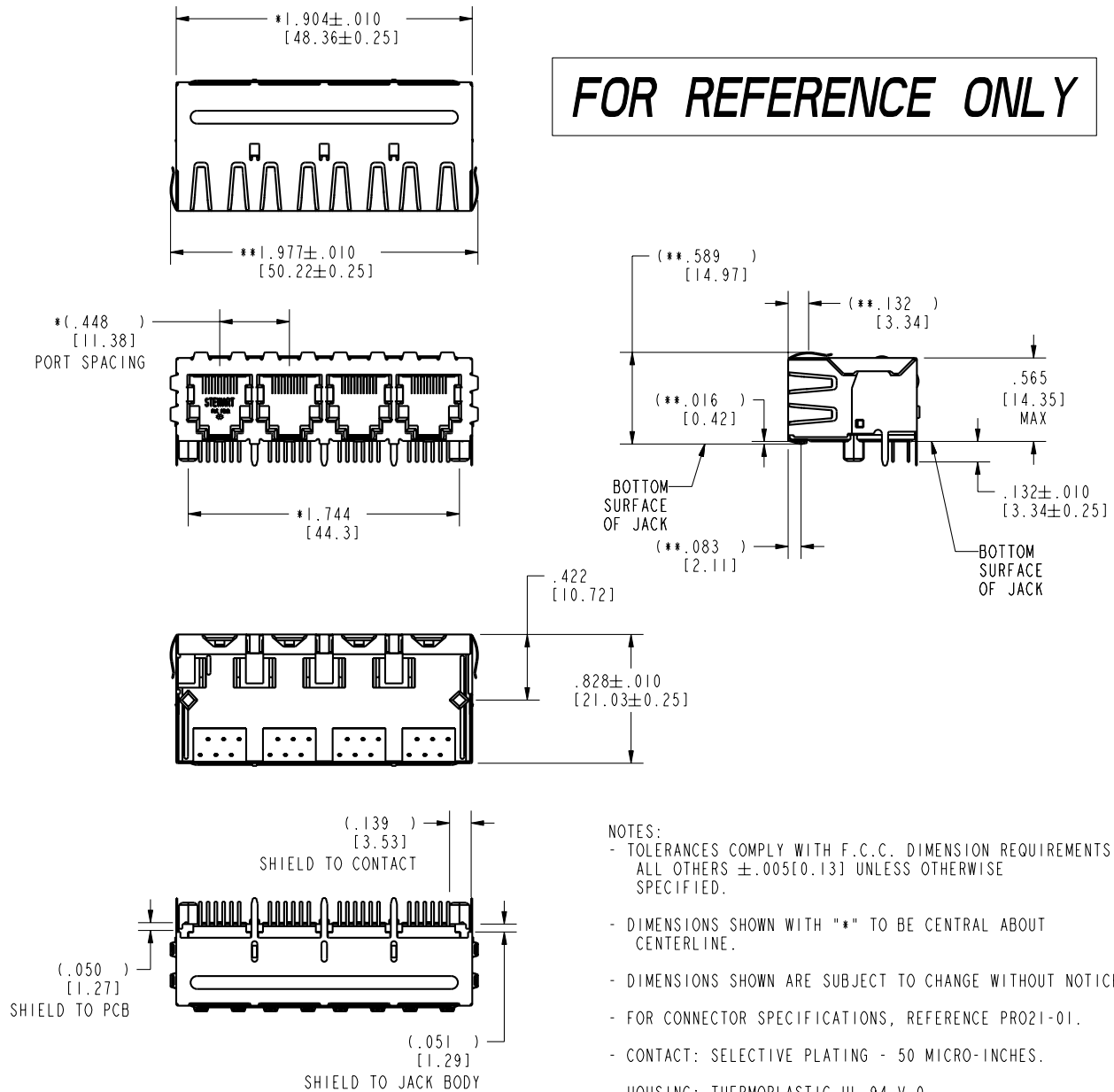


| REV. | REVISION CHANGES | ECN |
|------|---|------|
| A0 | AS DRAWN | |
| A1 | PART NO. # SS-664604S-A-PG4-AC HAS BEEN REMOVED. (-50) ADDED TO CURRENT PT. NO. | 5263 |
| | | |
| | | |

SS-66604S-A-PG4-AC-50

EMI - RFI ONE PIECE SHIELDED, ESD GROUNDED
4 PORT RJ11 HARMONICA Jack
WITH PANEL GROUNDS

FOR REFERENCE ONLY



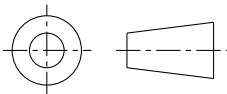
NOTES:

- TOLERANCES COMPLY WITH F.C.C. DIMENSION REQUIREMENTS ALL OTHERS $\pm .005$ [0.13] UNLESS OTHERWISE SPECIFIED.
- DIMENSIONS SHOWN WITH "*" TO BE CENTRAL ABOUT CENTERLINE.
- DIMENSIONS SHOWN ARE SUBJECT TO CHANGE WITHOUT NOTICE.
- FOR CONNECTOR SPECIFICATIONS, REFERENCE PRO21-01.
- CONTACT: SELECTIVE PLATING - 50 MICRO-INCHES.
- HOUSING: THERMOPLASTIC UL 94 V-0.
- "***" ON DIMENSION INDICATES HIGHEST POINT OF BEAM.

SHEET 1 OF 2

THIS DRAWING AND THE SUBJECT MATTER SHOWN THEREON ARE CONFIDENTIAL AND THE PROPRIETARY PROPERTY OF STEWART CONNECTOR SYSTEMS ("SCS") AND SHALL NOT BE REPRODUCED, COPIED OR USED IN ANY MANNER WITHOUT PRIOR WRITTEN CONSENT OF "SCS". THE SUBJECT MATTER MAY BE PATENTED OR A PATENT MAY BE PENDING. © SCS

THIRD ANGLE PROJECTION

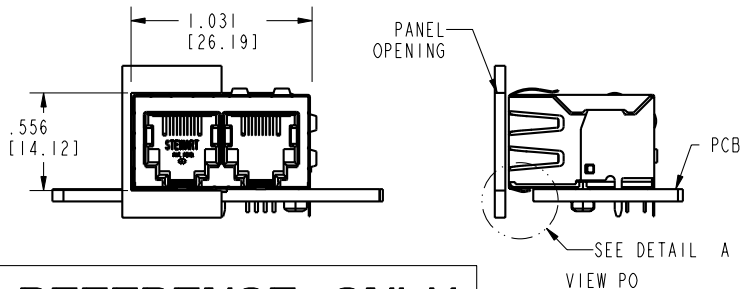
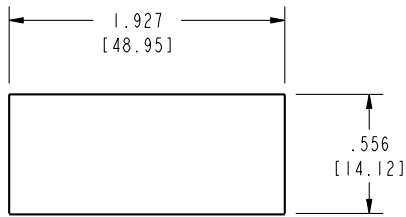
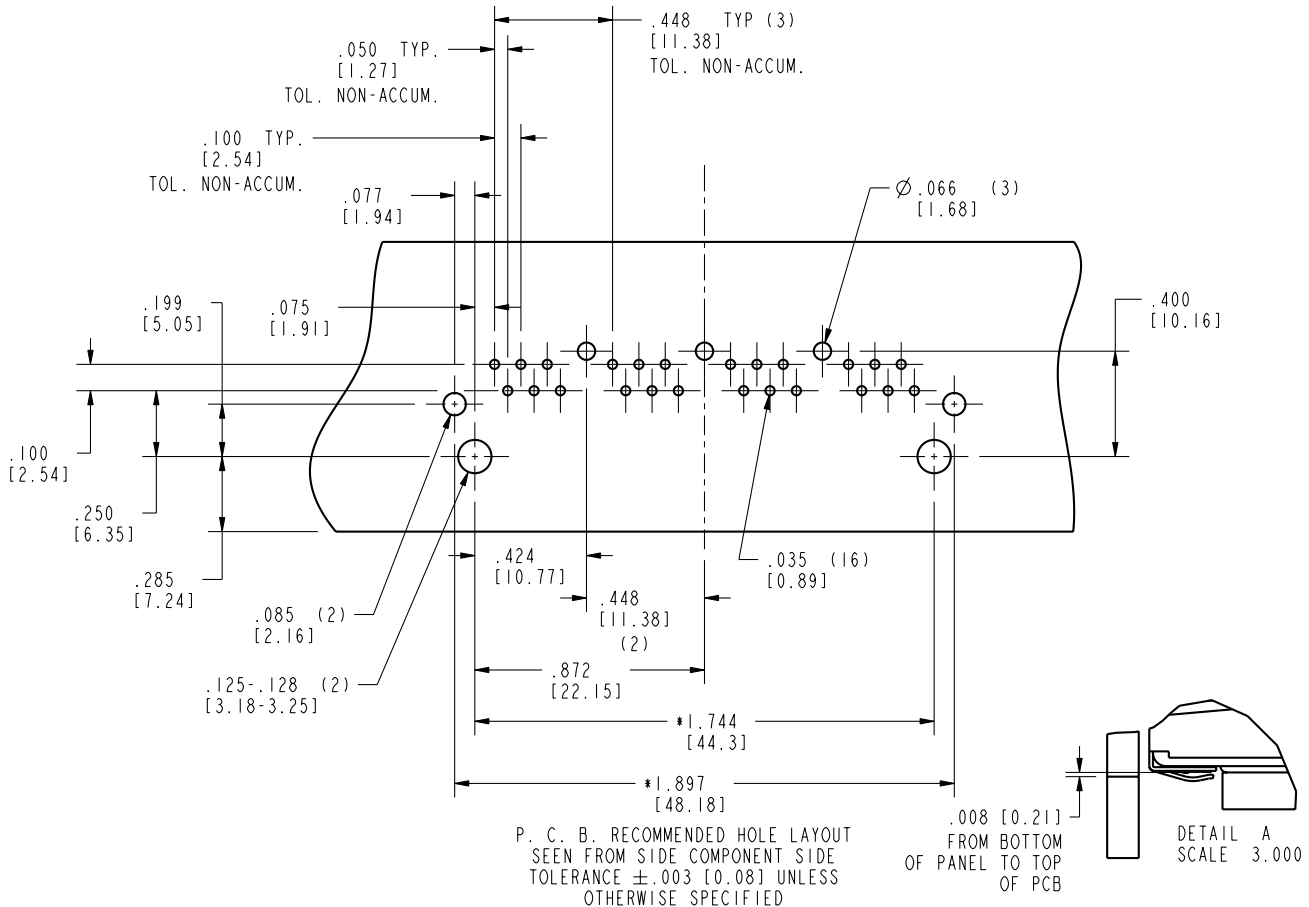


| | | | | |
|--|----------------|---------|----------|-------------------------|
| DRN BY: | STEVE ROYER | DATE: | 12-18-01 | ORIGTL PROPOSAL DRAWING |
| CKD BY: | BOB COLANTUONO | DATE: | 01/16/02 | EWR NUMBER |
| APPD BY: | JASON COWBURN | DATE: | 01/16/02 | PROJECT NO. |
| UNLESS OTHERWISE SPECIFIED TOLERANCES ARE $\pm .005$ [±0.13] | | DWG NO. | CT660196 | |
| | | | | REV. A1 |

| REV. | REVISION CHANGES | ECN |
|------|--|------|
| A0 | AS DRAWN | |
| A1 | PART NO. # SS-664604S-A-PG4-AC HAS BEEN REMOVED. (-50) ADDED TO CURRENT PART NO. | 5263 |
| | | |
| | | |

SS-66604S-A-PG4-AC-50

EMI - RFI ONE PIECE SHIELDED, ESD GROUNDED
 4 PORT RJ11 HARMONICA Jack
 WITH PANEL GROUNDS

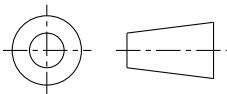


FOR REFERENCE ONLY

SHEET 2 OF 2

THIS DRAWING AND THE SUBJECT MATTER SHOWN THEREON ARE CONFIDENTIAL AND THE PROPRIETARY PROPERTY OF STEWART CONNECTOR SYSTEMS ("SCS") AND SHALL NOT BE REPRODUCED, COPIED OR USED IN ANY MANNER WITHOUT PRIOR WRITTEN CONSENT OF "SCS". THE SUBJECT MATTER MAY BE PATENTED OR A PATENT MAY BE PENDING. © SCS

THIRD ANGLE PROJECTION



| | | | | |
|---|----------------|---------|----------|--------------------------|
| DRN BY: | STEVE ROYER | DATE: | 12-18-01 | ORIGTLN PROPOSAL DRAWING |
| CKD BY: | BOB COLANTUONO | DATE: | 01/16/02 | EWR NUMBER |
| APPD BY: | JASON COWBURN | DATE: | 01/16/02 | PROJECT NO. |
| UNLESS OTHERWISE SPECIFIED TOLERANCES ARE ±.005 [±0.13] | | DWG NO. | CT660196 | |
| | | | | REV. A1 |