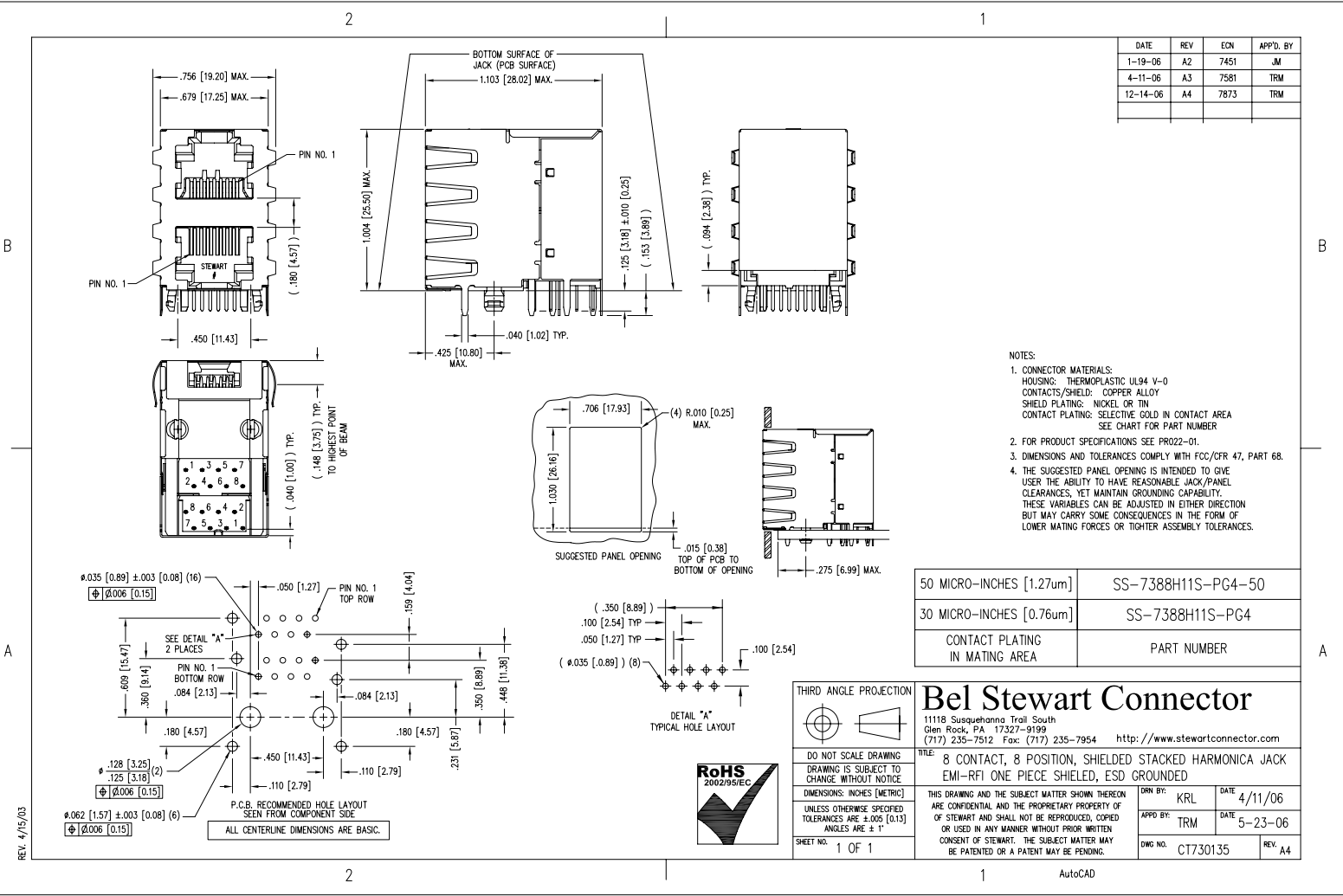


DATE	REV	ECN	APP'D. BY
1-19-06	A2	7451	JM
4-11-06	A3	7581	TRM
12-14-06	A4	7873	TRM



- NOTES:
- CONNECTOR MATERIALS:  
HOUSING: THERMOPLASTIC UL94 V-0  
CONTACTS/SHIELD: COPPER ALLOY  
SHIELD PLATING: NICKEL OR TIN  
CONTACT PLATING: SELECTIVE GOLD IN CONTACT AREA  
SEE CHART FOR PART NUMBER
  - FOR PRODUCT SPECIFICATIONS SEE PRO2-01.
  - DIMENSIONS AND TOLERANCES COMPLY WITH FCC/CFR 47, PART 68.
  - THE SUGGESTED PANEL OPENING IS INTENDED TO GIVE USER THE ABILITY TO HAVE REASONABLE JACK/PANEL CLEARANCES, YET MAINTAIN GROUNDING CAPABILITY. THESE VARIABLES CAN BE ADJUSTED IN EITHER DIRECTION BUT MAY CARRY SOME CONSEQUENCES IN THE FORM OF LOWER MATING FORCES OR TIGHTER ASSEMBLY TOLERANCES.

50 MICRO-INCHES [1.27um]	SS-7388H1S-PG4-50
30 MICRO-INCHES [0.76um]	SS-7388H1S-PG4
CONTACT PLATING IN MATING AREA	PART NUMBER

**THIRD ANGLE PROJECTION**

**Bel Stewart Connector**  
11118 Susquehanna Trail South  
Glen Rock, PA 17327-9199  
(717) 235-7512 Fax: (717) 235-7954 <http://www.stewartconnector.com>

**TITLE:** 8 CONTACT, 8 POSITION, SHIELDED STACKED HARMONICA JACK  
EMI-RFI ONE PIECE SHIELDED, ESD GROUNDED

**DRN BY:** KRL **DATE:** 4/11/06  
**APP'D BY:** TRM **DATE:** 5-23-06  
**DWG NO.:** CT730135 **REV.:** A4

**DO NOT SCALE DRAWING**  
DRAWING IS SUBJECT TO CHANGE WITHOUT NOTICE

**DIMENSIONS: INCHES (METRIC)**  
UNLESS OTHERWISE SPECIFIED  
TOLERANCES ARE ±.005 [0.13]  
ANGLES ARE ± 1°

**THIS DRAWING AND THE SUBJECT MATTER SHOWN THEREON ARE CONFIDENTIAL AND THE PROPRIETARY PROPERTY OF BEL STEWART AND SHALL NOT BE REPRODUCED, COPIED OR USED IN ANY MANNER WITHOUT PRIOR WRITTEN CONSENT OF STEWART. THE SUBJECT MATTER MAY BE PATENTED OR A PATENT MAY BE PENDING.**

**RoHS**  
2002/95/EC

SHEET NO. 1 OF 1

REV. 4/15/03

AutoCAD