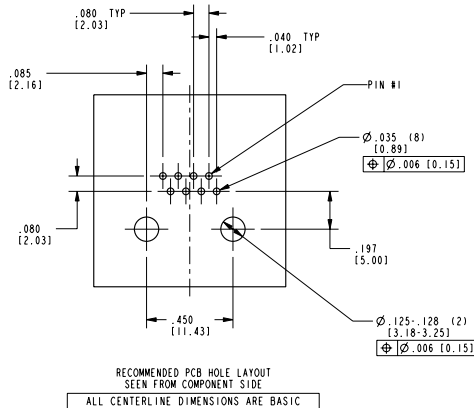
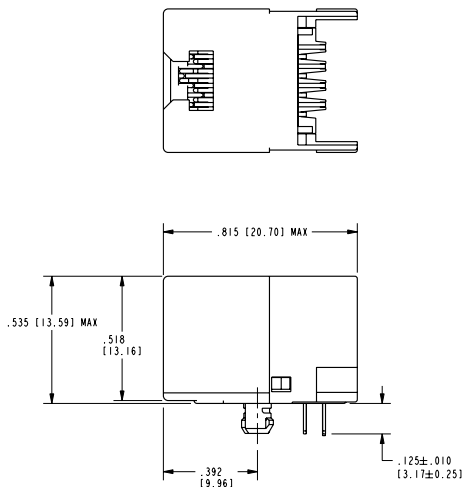
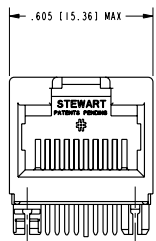


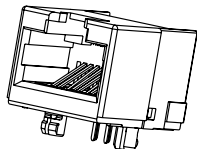
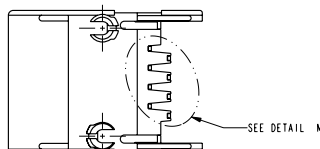
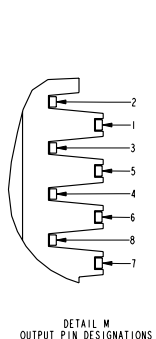
2

1

DATE	REV.	ECN	APP'D BY
6-20-07	B2	8110	TRM
9-26-07	C0	8241	TRM

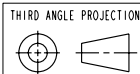


RECOMMENDED PCB HOLE LAYOUT  
SEEN FROM COMPONENT SIDE  
ALL CENTERLINE DIMENSIONS ARE BASIC



- NOTES:
- MATERIALS:  
HOUSING -- THERMOPLASTIC UL 94-V0  
CONTACTS -- COPPER ALLOY  
CONTACT PLATING -- SELECTIVE GOLD IN CONTACT AREA
  - PRODUCT DESIGNED FOR CAT6 APPLICATIONS
  - DIMENSIONS AND TOLERANCES COMPLY WITH FCC/CFR 47, PART 68.

50 MICRO-INCHES [1.27um]	SS-60000-010
CONTACT PLATING IN MATING AREA	PART NUMBER



## Bel Stewart Connector

11118 Susquehanna Trail South  
Glen Rock, PA 17327-9199  
(717) 235-7512 Fax: (717) 235-7954 <http://www.stewartconnector.com>

DO NOT SCALE DRAWING	TITLE: 60 SERIES UNSHIELDED RIGHT ANGLE JACK
DRAWING IS SUBJECT TO CHANGE WITHOUT NOTICE	
DIMENSIONS: INCHES (METRIC)	THIS DRAWING AND THE SUBJECT MATTER SHOWN THEREON ARE CONFIDENTIAL AND THE PROPRIETARY PROPERTY OF BEL STEWART CONNECTOR AND SHALL NOT BE REPRODUCED, COPIED, OR USED IN ANY MANNER WITHOUT PRIOR WRITTEN CONSENT OF BEL STEWART CONNECTOR. THE SUBJECT MATTER MAY BE PATENTED OR A PATENT MAY BE PENDING.
UNLESS OTHERWISE SPECIFIED TOLERANCES ARE ±.005 (0.13) ANGLES ARE ±1°	DRN BY: JRC DATE 04-14-04
SHEET NO. 1 OF 1	APP'D BY: RGC DATE 04-14-04
	DWG. NO. CT600025 REV. C0



REV. 17/3/03

2

1

Prof/E