

10 9 8 7 6 5 4 3 2 1

NOTES :

1- MATERIAL:

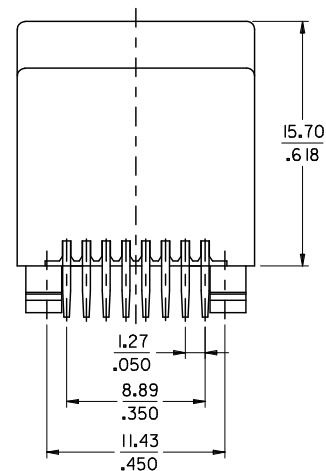
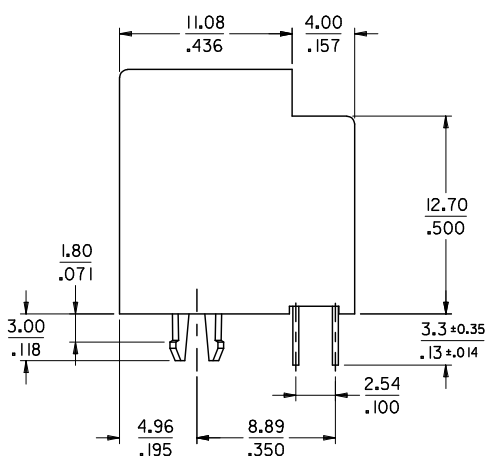
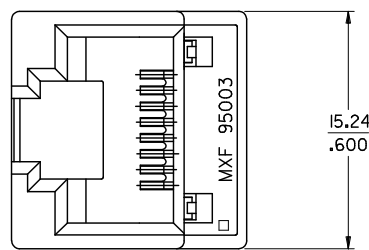
-HOUSING: POLYESTER FIBER GLASS FILLED UL 94-V0
COLOR BLACK.

-TERMINAL: PHOSPHOR BRONZE.

PLATING :

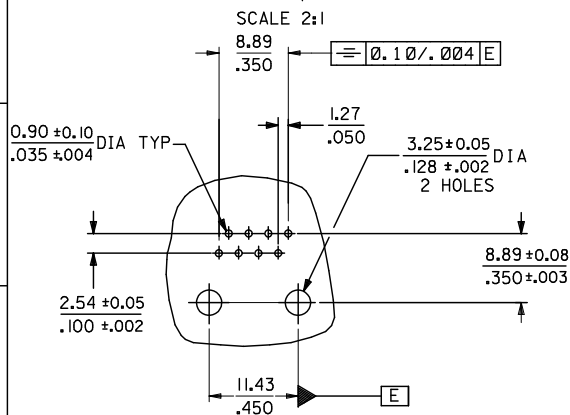
POST PLATE 0.00127-0.00152/.000050-.000060 GOLD IN CONTACT AREA , 0.00190/.000075 MIN PURE TIN IN TAIL AREA BOTH OVER 0.00127/.000050 MIN NICKEL OVERALL.

- 2- JACK FOR MATING WITH F.C.C. 68 PLUGS (90075 MOLEX SERIES).
- 3- PRODUCT SPECIFICATION PS-95003 AND PS-85505 (SECTION 5.2).
- 4- APPLICATION SPECIFICATION AS-95001.
- 5- PACKAGING SPECIFICATION PK-95003 SHEET 1:
(TRAY PACKAGING).
- 6- EXCEEDS CATEGORY 5E PERFORMANCE.



P.C.B. MOUNTING PATTERN
(see from component side)

SCALE 2:1



ENTER DESCRIPTION IEC NO: MG2005-0/51 DRW:NC SERASTI 2004/10/25 CHK:FCARABET 2004/10/25 APPR:KNOLLER 2004/11/09 REV:	QUALITY SYMBOLS ▽=0 ▽=0	GENERAL TOLERANCES (UNLESS SPECIFIED)	DIMENSION STYLE MM/IN	SCALE 4:1	DESIGN UNITS METRIC	THIRD ANGLE PROJECTION															
		<table border="1"> <tr> <th></th> <th>mm</th> <th>INCH</th> </tr> <tr> <td>4 PLACES</td> <td>± .006</td> <td>± .0006</td> </tr> <tr> <td>3 PLACES</td> <td>± .015</td> <td>± .0010</td> </tr> <tr> <td>2 PLACES</td> <td>± 0.25</td> <td>± .010</td> </tr> <tr> <td>1 PLACE</td> <td>± 0.25</td> <td>± .010</td> </tr> </table>		mm	INCH	4 PLACES	± .006	± .0006	3 PLACES	± .015	± .0010	2 PLACES	± 0.25	± .010	1 PLACE	± 0.25	± .010	DRAWN BY HB	DATE 99/08/18	TITLE HIGH SPEED MODULAR JACK TOP ENTRY LOW PROFILE THROUGH HOLE 8 CKTS	
		mm	INCH																		
	4 PLACES	± .006	± .0006																		
3 PLACES	± .015	± .0010																			
2 PLACES	± 0.25	± .010																			
1 PLACE	± 0.25	± .010																			
	DRAFT WHERE APPLICABLE MUST REMAIN WITHIN DIMENSIONS	APPROVED BY FB	DATE 99/08/18	MOLEX INCORPORATED																	
		MATERIAL NO. 85511-0001	DOCUMENT NO. SD-85511-001	SHEET NO. 1 OF 1																	

fb_frame_A3_P_ME_T
Rev. D 2004/04/02

9 8 7 6 5 4 3 2 1