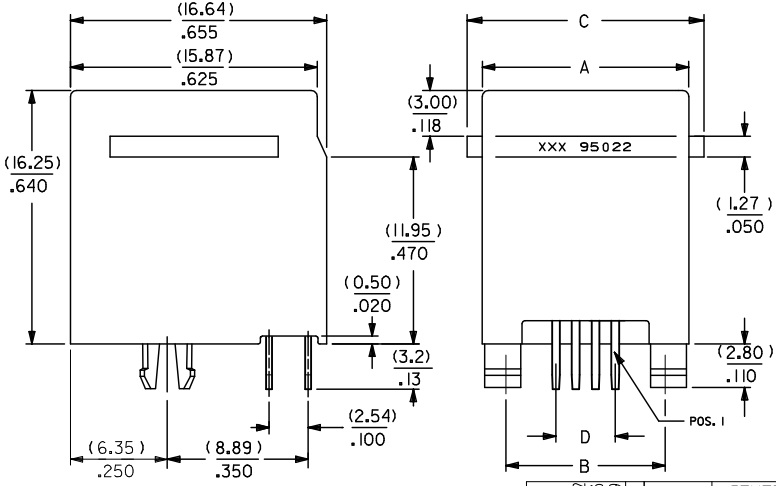
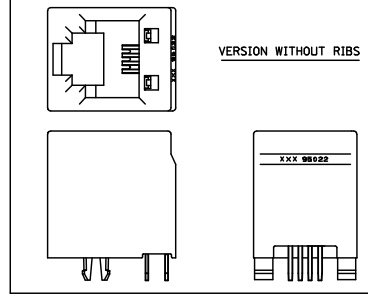
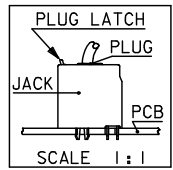
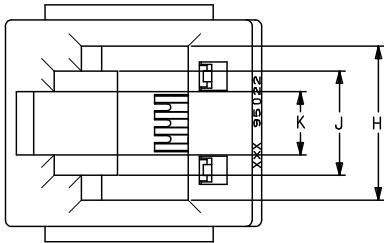


10 9 8 7 6 5 4 3 2 1



NOTES :

- 1- MATERIAL:**
- HOUSING: LCP FIBER GLASS FILLED 94-V-0
COLOR BLACK.
 - TERMINAL: BRASS
FINISH 2
 - POST PLATE (0.00127-0.00152)/.000050-.000060
GOLD IN CONTACT AREA (0.00190)/.000075 MIN.
PURE TIN IN TAIL AREA BOTH OVER (0.00127)/
.000050 MIN. NICKEL OVERALL.
 - 2- PC BOARD THICKNESS : (1.57) / .062 .
 - 3- JACK FOR MATING WITH F.C.C. 68 PLUGS 90075 MOLEX SERIES .
 - 4- PRODUCT SPECIFICATION PS-95522-001.
 - 5- APPLICATION SPECIFICATION AS-85513-001
 - 6- PACKAGING SPECIFICATION PK-95022, (SHT.1 TRAY PACKAGING)
PK-95022, (SHT.2 TUBE PACKAGING)
 - 7- FOR ILLUSTRATION PURPOSES A 4 CIRCUIT IS SHOWN.
 - 8- PACKAGING SPECIFICATION RPK-95022-001 (TUBE PACKAGING).
 - 9- MANUFACTURING I.D. CAN BE EITHER MG, MXF OR MXI.

ADDED PART No. E.C. NO: E2009-0420 DRAWN BY: DRWINDBRYNES CHYK: 2009/03/06 APPR: J WALLACE 2009/03/09	QUALITY SYMBOLS	GENERAL TOLERANCES (UNLESS SPECIFIED)	DIMENSION STYLE	SCALE	DESIGN UNITS	THIRD ANGLE PROJECTION															
	$\nabla=0$ $\nabla=0$	<table border="1"> <tr> <th></th> <th>mm</th> <th>INCH</th> </tr> <tr> <td>4 PLACES</td> <td>± .010</td> <td>± .0004</td> </tr> <tr> <td>3 PLACES</td> <td>± .015</td> <td>± .0006</td> </tr> <tr> <td>2 PLACES</td> <td>± .025</td> <td>± .0010</td> </tr> <tr> <td>1 PLACE</td> <td>± .035</td> <td>± .0014</td> </tr> </table>		mm	INCH	4 PLACES	± .010	± .0004	3 PLACES	± .015	± .0006	2 PLACES	± .025	± .0010	1 PLACE	± .035	± .0014	MM/IN	1:1	METRIC	
		mm	INCH																		
	4 PLACES	± .010	± .0004																		
3 PLACES	± .015	± .0006																			
2 PLACES	± .025	± .0010																			
1 PLACE	± .035	± .0014																			
DRAFT WHERE APPLICABLE MUST REMAIN WITHIN DIMENSIONS	DRAWN BY: KNOLLER DATE: 04/08/27 CHECKED BY: FCARABET DATE: 04/08/30 APPROVED BY: KNOLLER DATE: 04/08/30	TITLE	HIGH PROFILE TOP ENTRY JACK																		
REV	DESCRIPTION	MATERIAL NO.	DOCUMENT NO.	SHEET NO.																	
D		SEE CHART SHT. 2	SD-95522-001	1 OF 3																	

tb_frame_A3_P_ME_T
Rev. D 2004/04/02

9 8 7 6 5 4 3 2 1

