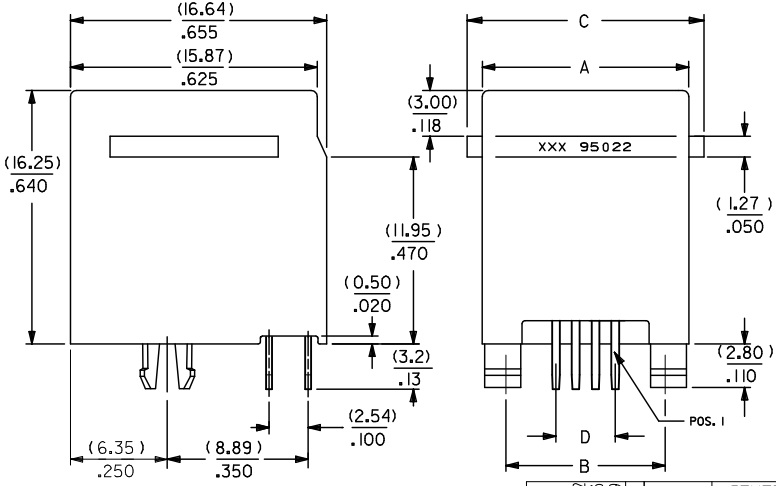
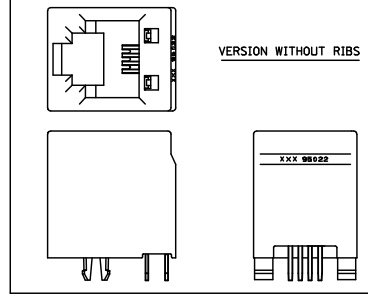
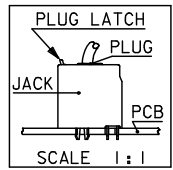
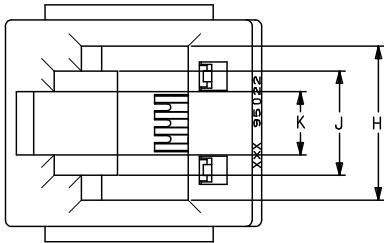


10 9 8 7 6 5 4 3 2 1



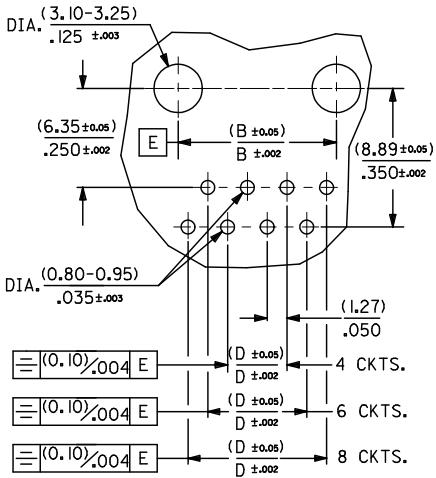
**NOTES :**

- 1- MATERIAL:**
- HOUSING: LCP FIBER GLASS FILLED 94-V-0  
COLOR BLACK.
  - TERMINAL: BRASS  
FINISH 2
  - POST PLATE (0.00127-0.00152)/.000050-.000060  
GOLD IN CONTACT AREA (0.00190)/.000075 MIN.  
PURE TIN IN TAIL AREA BOTH OVER (0.00127)/  
.000050 MIN. NICKEL OVERALL.
  - 2- PC BOARD THICKNESS : (1.57) / .062 .
  - 3- JACK FOR MATING WITH F.C.C. 68 PLUGS 90075 MOLEX SERIES .
  - 4- PRODUCT SPECIFICATION PS-95522-001.
  - 5- APPLICATION SPECIFICATION AS-85513-001
  - 6- PACKAGING SPECIFICATION PK-95022. (SHT.1 TRAY PACKAGING)  
PK-95022. (SHT.2 TUBE PACKAGING)
  - 7- FOR ILLUSTRATION PURPOSES A 4 CIRCUIT IS SHOWN.
  - 8- PACKAGING SPECIFICATION RPK-95022-001 (TUBE PACKAGING).
  - 9- MANUFACTURING I.D. CAN BE EITHER MG, MXF OR MXI.

ADDED PART No. E2209-0420 DRWN:DBRYNES 2009/03/06 CHKD: 2009/03/06 APPR: J WALLACE 2009/03/09	QUALITY SYMBOLS ▽=0 ▽=0	GENERAL TOLERANCES (UNLESS SPECIFIED)		DIMENSION STYLE MM/IN	SCALE 1:1	DESIGN UNITS METRIC	THIRD ANGLE PROJECTION	
		4 PLACES ± --- ± ---	mm INCH	DRAWN BY KNOLLER	DATE 04/08/27	TITLE HIGH PROFILE TOP ENTRY JACK		
		3 PLACES ± --- ± .010		CHECKED BY FCARABET	DATE 04/08/30	MOLEX INCORPORATED		
		2 PLACES ± 0.25 ± .014 1 PLACE ± 0.35 ± --- ANGULAR ± 2 °		APPROVED BY KNOLLER	DATE 04/08/30	MATERIAL NO. SEE CHART SHT. 2	DOCUMENT NO. SD-95522-001	SHEET NO. 1 OF 3
DRAFT WHERE APPLICABLE MUST REMAIN WITHIN DIMENSIONS		THIS DRAWING CONTAINS INFORMATION THAT IS PROPRIETARY TO MOLEX INCORPORATED AND SHOULD NOT BE USED WITHOUT WRITTEN PERMISSION						

PART NUMBERS FOR JACK WITH RIBS									
TYPE	PACKAGING	POS. 4	TOOLED	POS. 6	TOOLED	POS. 6	TOOLED	POS. 8	TOOLED
		4 CKTS.		4 CKTS.		6 CKTS.		8 CKTS.	
FINISH 2	TRAY	95522-2447	X	95522-2647	X	95522-2667	X	95522-2887	X
	TUBE					95522-2617	X		
						SEE NOTE 8 SH.1			

PART NUMBERS FOR JACK WITHOUT RIBS									
TYPE	PACKAGING	POS. 4	TOOLED	POS. 6	TOOLED	POS. 6	TOOLED	POS. 8	TOOLED
		4 CKTS.		4 CKTS.		6 CKTS.		8 CKTS.	
FINISH 2	TRAY	95522-2441	X	95522-2641	X	95522-2661	X	95522-2881	
	TUBE					95522-2611	X		



MOUNTING HOLE PATTERNS  
(SEE FROM COMPONENT SIDE)

DIM.	TYPE	POS. 4	POS. 6		POS. 8
		4 CKTS.	4 CKTS.	6 CKTS.	8 CKTS.
A		(11.18) / .440	(13.21) / .520	(13.21) / .520	(15.24) / .600
B		(7.62) / .300	(10.16) / .400	(10.16) / .400	(11.43) / .450
C	(WITH RIBS)	(14.00) / .551	(16.00) / .630	(16.00) / .630	(18.00) / .709
D		(3.81) / .150	(3.81) / .150	(6.35) / .250	(8.89) / .350
H		(7.82) / .308	(9.88) / .389	(9.88) / .389	(11.94) / .470
J		(5.64) / .222	(6.70) / .264	(6.70) / .264	(6.30) / .248
K		(3.07) / .121	(4.06) / .160	(4.06) / .160	(4.06) / .160

ADDED 95522-2611 EC NO: E2009-0420 DRWN: DRYNES 2009/03/02 CHKD: 2009/03/06 APPR: WALLACE 2009/03/09	QUALITY SYMBOLS	GENERAL TOLERANCES (UNLESS SPECIFIED) mm INCH 4 PLACES $\pm$ --- $\pm$ --- 3 PLACES $\pm$ --- $\pm$ .010 2 PLACES $\pm$ 0.25 $\pm$ .014 1 PLACE $\pm$ 0.35 $\pm$ --- ANGULAR $\pm$ 2° DRAFT WHERE APPLICABLE MUST REMAIN WITHIN DIMENSIONS	DIMENSION STYLE	SCALE	DESIGN UNITS	THIRD ANGLE PROJECTION	
			MM/IN	1:1	METRIC		
			DRAWN BY	DATE	TITLE		
			KNOLLER	04/08/27	HIGH PROFILE TOP ENTRY JACK		
	CHECKED BY	DATE					
	FCARABET	04/08/30					
	APPROVED BY	DATE					
	KNOLLER	04/08/30					
	MATERIAL NO.	DOCUMENT NO.					
	SEE CHART	SD-95522-001					
	SIZE A3		THIS DRAWING CONTAINS INFORMATION THAT IS PROPRIETARY TO MOLEX INCORPORATED AND SHOULD NOT BE USED WITHOUT WRITTEN PERMISSION				