

DRAWING MADE IN THIRD ANGLE PROJECTION

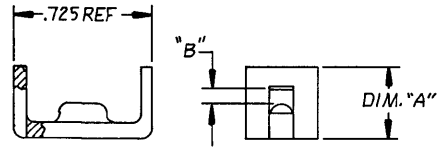
THIS DRAWING IS UNPUBLISHED. RELEASED FOR PUBLICATION

© COPYRIGHT 19 BY AMP INCORPORATED, HARRISBURG, PA. ALL INTERNATIONAL RIGHTS RESERVED. AMP PRODUCTS MAY BE COVERED BY U.S. AND FOREIGN PATENTS AND/OR PATENTS PENDING.

⚠ CHECK CABLE RANGE FOR SATISFACTORY PERFORMANCE ON SPECIFIC CABLE TO BE USED.

TABULATION				
PART NO.	COLOR	DIM. "A" REF	DIM. "B" REF	APPROX CABLE DIA ⚠
229910-1	BLACK	.375	.100	.350-.425
1-229910-1	BLACK	.470	.195	.425-.500
229910-4	GRAY	.375	.100	.350-.425
1-229910-4	GRAY	.470	.195	.425-.500
2-229910-1	BLACK	.375	.050	.325-.370
2-229910-4	GRAY	.375	.050	.325-.370
3-229910-1	BLACK	.375	.015	.300
3-229910-4	GRAY	.375	.015	.300
4-229910-1	BLACK	.535	.260	.550

REVISIONS						
P	F	ZONE	LTR	DESCRIPTION	DATE	APPROVED
			S	085:4/4; EC.0210-0415-96	29/86	DS mH



UNLESS OTHERWISE SPECIFIED DIMENSIONS ARE IN INCHES. TOLERANCES ON DECIMALS ANGLES		CONTRACT NO. 4-18-86		PART NO.	
CHK. <i>Stephen Dean</i> 5/1/86		APPROVED <i>Stephen Dean</i> 5/1/86		AMP INCORPORATED Harrisburg, Pa.	
MATERIAL THERMOPLASTIC		NAME CLAMP, CABLE		DRAWING NO. 229910	
FINISH		SIZE B		FSCM NO. 00779	
OTHER APPD		SCALE 2:1		SHEET 1 OF 1	

AMP 1470-17

CUSTOMER DRAWING