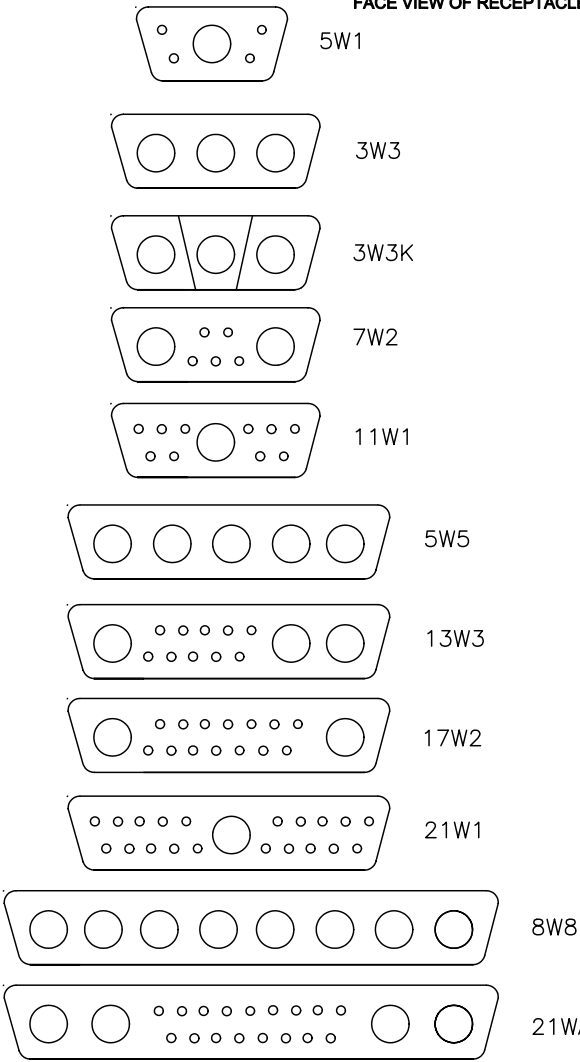
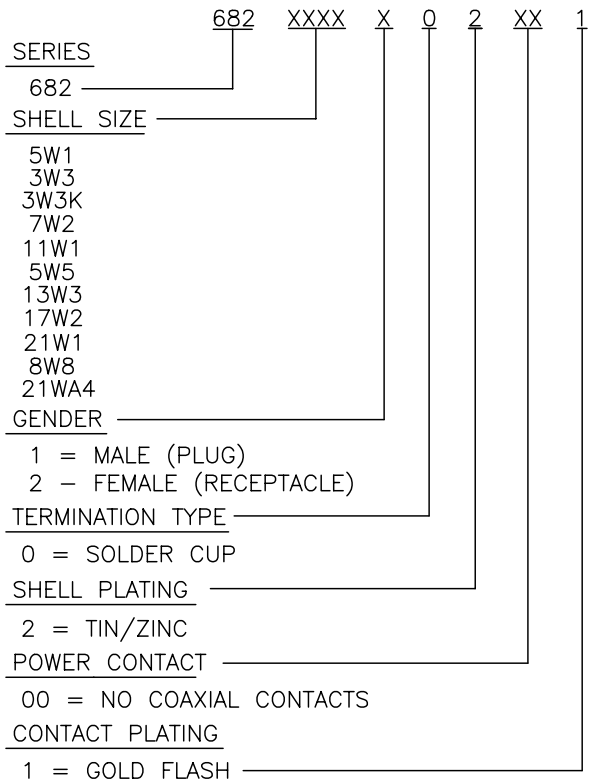


DESCRIPTION: COAXIAL/SIGNAL SOLDER CUP

FACE VIEW OF RECEPTACLE IS SHOWN



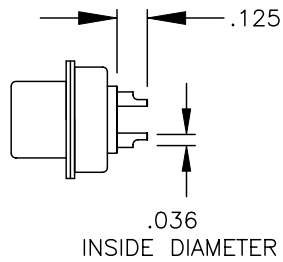
PART NUMBER KEY



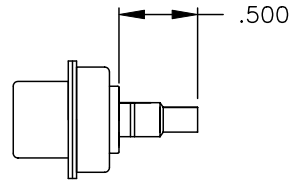
68221WA4 PART NUMBERS = 68221WA4P001 (MALE)  
68221WA4S001 (FEMALE)

	THESE DRAWINGS AND SPECIFICATIONS ARE THE PROPERTY OF NorComp AND SHALL NOT BE REPRODUCED, COPIED OR USED AS THE BASIS FOR THE MANUFACTURE OR SALE OF APPARATUS WITHOUT WRITTEN PERMISSION.		DRAWN: PAM JENKINS	DATE: 6-5-02
			CHECKED:	DATE:
<h1>NorComp</h1>		SCALE:	SHEET 1 OF 1	REV 2
		DWG NO. 682 SERIES CONNECTORS		

DESCRIPTION: SIGNAL/COAXIAL CONTACTS

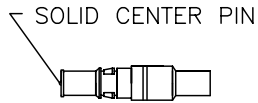


SIGNAL CONTACTS  
ACCEPTS UP TO 20 AWG WIRE

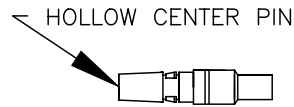


COAXIAL CONTACT  
ACCEPTS 75 OHM COAX, RG 179/U


NOTE: SIGNAL CONTACTS COME PRE-LOADED INTO INSULATOR.  
COAXIAL CONTACTS MUST BE PURCHASED SEPARATELY.



MALE COAXIAL CONTACT  
PART NUMBER: 682001170001



FEMALE COAXIAL CONTACT  
PART NUMBER: 682002170001

 <h1>NorComp</h1>	THESE DRAWINGS AND SPECIFICATIONS ARE THE PROPERTY OF NorComp AND SHALL NOT BE REPRODUCED, COPIED OR USED AS THE BASIS FOR THE MANUFACTURE OR SALE OF APPARATUS WITHOUT WRITTEN PERMISSION.		DRAWN: PAM JENKINS	DATE: 6-5-02
			CHECKED:	DATE:
	SCALE:	SHEET 1 OF 1	REV 2	
DWG NO. 682 XXXX X 0 2 XX 1				