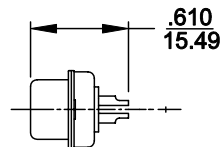
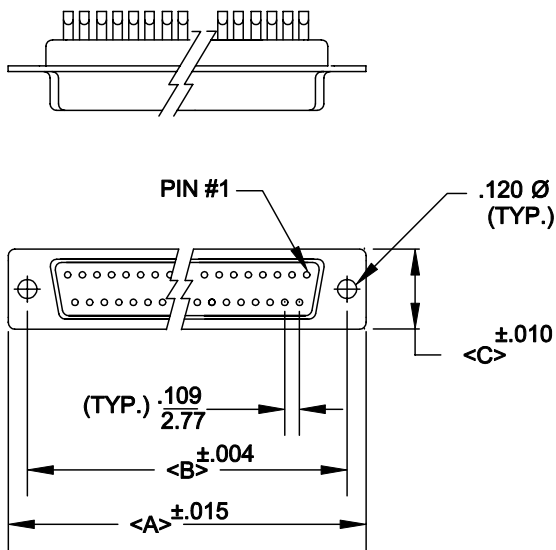


DESCRIPTION: **CABLE MOUNT FILTERED D-SUB CONNECTOR**

	A	B	C
9	1.204	.984	.480
	30.6	25.0	12.20
15	1.535	1.312	.480
	39.0	33.3	12.20
25	2.078	1.850	.480
	52.8	47.0	12.20
37	2.724	2.50	.480
	69.2	63.5	12.20



477-XXX-X02-001

SERIES _____
 POSITIONS _____
 009 _____
 015 _____
 025 _____
 037 _____

GENDER _____
 1 = MALE
 2 = FEMALE

TERMINATION _____
 0 = SOLDER CUP

SHELL PLATING _____
 2 = TIN

HARDWARE OPTIONS _____
 00 = NO HARDWARE

PLATING OPTIONS _____
 1 = GOLD FLASH


SPECIFICATIONS:

MATERIALS:

SHELL: STEEL, TIN PLATED
 INSULATOR: UL 94V-0 RATED PBTP
 GLASS-FIBER REINFORCED

ELECTRICALS:

INDIVIDUAL CAPACITOR VALUE = 1000 pF
 OTHER VALUES AVAILABLE: CONSULT FACTORY
 CURRENT RATING: 5 AMPS
 CONTACT RESISTANCE: <10 mOHMS
 INSULATOR RESISTANCE: 1000 OHMS
 VOLTAGE: 1 KV / AC
 TEMPERATURE: -55°C TO +125°C

 NorComp	THESE DRAWINGS AND SPECIFICATIONS ARE THE PROPERTY OF NorComp AND SHALL NOT BE REPRODUCED, COPIED OR USED AS THE BASIS FOR THE MANUFACTURE OF SALE OF APPARATUS WITHOUT WRITTEN PERMISSION.	DRAWN: WAYNE ROBBINS CHECKED: _____	DATE: 9-01-98 DATE: _____
	SCALE: 1:1 DWG NO. 477-XXX-202-001	SHEET 1 OF 1	REV 2