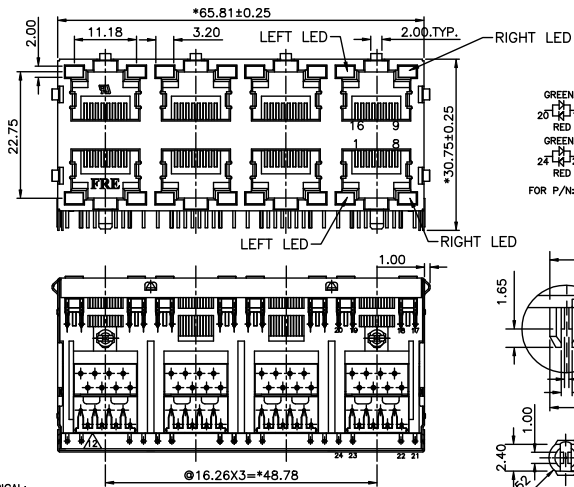
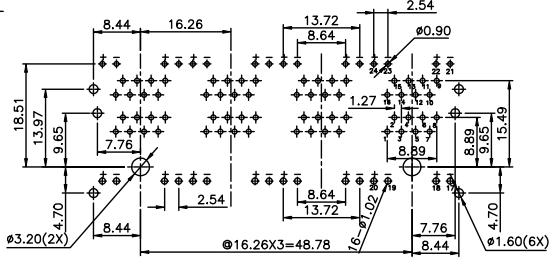
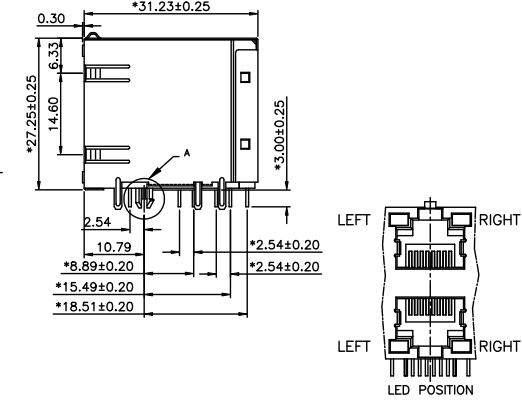
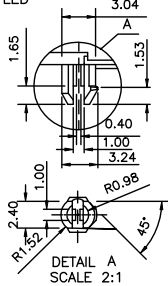


D1RFRD006

REVISION RECORD				
REV	ECC	DESCRIPTION	DRFT	CHKD



GREEN GREEN
20 18 17
RED RED
GREEN GREEN
21 22 21
RED RED
FOR P/NE5J88-D4CXFX-L



PC Board Layout
Component Side Shown

NOTES:

- ELECTRICAL:**
- VOLTAGE RATING : 125 VAC RMS.
 - CURRENT RATING : 1.5 AMP.
 - CONTACT RESISTANCE : 50 MILLIOHMS MAX.
 - INSULATION RESISTANCE: 1000 MEGOHMS MIN @ 500 VDC.
 - DIELECTRIC STRENGTH : 1000 VAC RMS 60Hz, 1MIN.
- MECHANICAL:**
- HOUSING MATERIAL : GLASS FILLED POLYESTER UL94V-0.
 - CONTACT MATERIAL : PHOSPHOR BRONZE #0.46mm.
 - PLATING : 1: CONTACT AREA- SELECTIVE GOLD PLATING.
2: TAILS- 150u" TIN-LEAD MIN OVER 50u" NICKEL OR TIN OVER NICKEL.
 - OPERATING LIFE : 750 CYCLES MIN.
 - PCB RETENTION PRE-SOLDER : 1 LB MIN.
 - PCB RETENTION POST-SOLDER: 10 LBS MIN.
 - LED COLOR : GREEN
- ENVIRONMENTAL:**
- STORAGE : -40°C TO +85°C.
 - OPERATION: -40°C TO +85°C.
 - WAVE SOLDERING TEMPERATURE: 230~250°C(3~5 SECONDS)
- MATES WITH MODULAR PLUG CONFORMING TO FCC PART 68, SUBPART F.

ROHS PART NUMBER: E5J88-X4CXFX-L

A-LEFT LED:GREEN, RIGHT LED:GREEN
B-LEFT LED:GREEN, RIGHT LED:ORANGE
C-LEFT LED:GREEN, RIGHT LED:YELLOW
L-LEFT LED:YELLOW, RIGHT LED:GREEN
F-LEFT LED:ORANGE, RIGHT LED:GREEN
D-LEFT LED:G+R, RIGHT LED:G+R

Gold Thickness:
1- 3u" 2- 6u" 3-15u"
4-30u" 5-50u"
0- W/O "FRE" LOGO
2- W/ "FRE" LOGO

DESIGNED LISTS		MATERIAL :		TITLE	
TOLERANCES EXCEPT AS NOTED		QTY :		RJ45(LED)	
APPROVALS		FINISH :		STACKED GANGED JACK, 2X4	
DATE		SCALE : 5:3		DRAWING NO. GE5J3001-LC	
DATE		DO NOT SCALE DRAWING		/PART NO. SEE NOTE	
DATE		SHEET 1		OF 1	

8 | 7 | 6 | 5 | 4 | 3 | 2 | 1

H
G
F
E
D
C
B
A