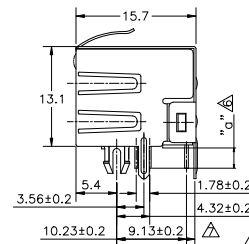
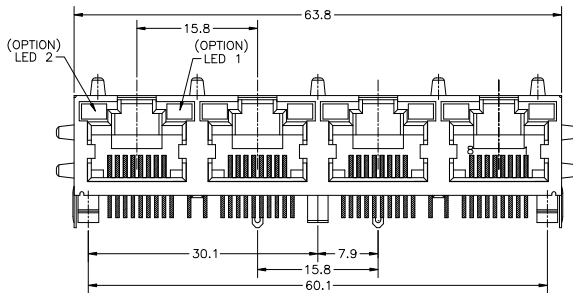
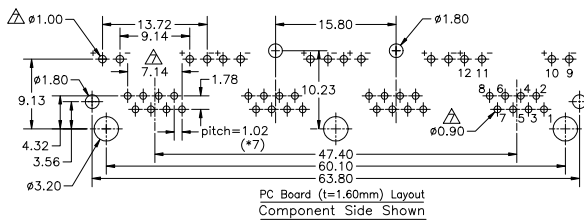


A1RFRD10



| REVISION RECORD |     |                       |       |      |
|-----------------|-----|-----------------------|-------|------|
| REV             | ECO | DESCRIPTION           | DRFT  | CHKD |
| △               |     | Number to revise.     | JERRY |      |
| △               |     | EC NUMBER NOTE & TYPE | JERRY |      |
| △               |     | ADD LED TYPE          | JERRY |      |
| △               |     | EC NUMBER             | JERRY |      |
| △               |     | ADD TYPE              | JERRY |      |
| △               |     | ADD TYPE              | JERRY |      |
| △               |     | Modify Dimension      | Chris |      |
| △               |     | ADD TYPE              | Jack  |      |
| △               |     | ADD TYPE              | Shull |      |

NOTES:

ELECTRICAL:

- VOLTAGE RATING : 125 VAC RMS.
- CURRENT RATING : 1.5 AMP.
- CONTACT RESISTANCE : 30 MILLIOHMS MAX.
- INSULATION RESISTANCE: 1000 MEGOHMS MIN @ 500 VDC.
- DIELECTRIC STRENGTH : 1000 VAC RMS 60HZ, 1MIN.
- LED RATINGS: FORWARD VOLTAGE: 2.2 VOLTS TYPICAL.  
REVERSE VOLTAGE: 5 VOLTS MAXIMUM.
- OPERATING: 750 CYCLES MIN.

MECHANICAL:

- HOUSING MATERIAL : PBT+30%G.F UL94V-0. COLOR-BLACK.
- INSERT MATERIAL : PBT+30%GF UL94V-0. COLOR-BLACK.
- LENS MATERIAL : PC UL94V-0. COLOR-CLEAR.
- BACK PLATE MATERIAL : PBT+30%GF. COLOR-BLACK.
- LED SIZE : 3.2\*2.0\*4.0\*P=2.29mm.
- SHIELD MATERIAL : COPPER ALLOY 0.25mm THICKNESS PLATING NI.
- CONTACT MATERIAL : PHOSPHOR BRONZE 0.35mm THICKNESS OR 0.46mm.
- PLATING : GOLD PLATING OVER NICKEL.
- PCB RETENTION PRE-SOLDER : 1 LB MIN.
- PCB RETENTION POST-SOLDER: 10 LBS MIN.

ENVIRONMENTAL:

- STORAGE : -40°C TO +85°C.
  - OPERATION: 0°C TO 70°C.
- MATES WITH MODULAR PLUG CONFORMING TO  
FCC PART 68, SUBPART F.  
CUL FILE NO. E163191

△△△△ PART NUMBER: E5J88 - X X X X X X X X

- 0-NO LED & NO LENS
  - 1-LED1:GREEN ,LED2:YELLOW .
  - 2-LED1:GREEN ,LED2:GREEN .
  - 3-LED1:YELLOW ,LED2:GREEN .
  - 4-LED1:G+Y ,LED2:G+Y .
  - 5-LED1:RED ,LED2:GREEN .
  - 7-LED1:YELLOW ,LED2:YELLOW .
  - 8-LED1:GREEN ,LED2:NO LED.
- PLATING:1-3u"  
2-6u"  
3-15u"  
4-30u"  
5-50u"  
(Ø0.46).
- ITEM: 0 OR A  
△5-W/O LOGO W/O TINNED SHIELD LEGS  
4-4 PORTS W/O MIDDLE POLE △  
C-4 PORTS W/ MIDDLE POLE  
0-W/O SHIELD  
1-NO TAB  
2-TOP TABS.  
3-SIDE TABS.  
4-TOP TABS & SIDE TABS.

|   |  |  |  |
|---|--|--|--|
| DPTD JERRY DATE 3/28/00<br>CHKD: DATE: ---<br>MFD: DATE: ---<br>APPVL: DATE: ---  |  | <b>FULL RISE ELECTRONIC CO., LTD</b>   |  |
| TOLERANCES EXCEPT AS NOTED<br>MM<br>.0 ± 0.20 ±<br>.00 ± 0.15 ±<br>.000 ± 0.025 ± |  | TITLE<br><b>LED GANG JACK 4 PORTS</b>  |  |
| ANGLES ±<br>THIRD ANGLE PROJECTION  |  | DRAWING NO. GE5J3A02<br>/PART NO. SEE NOTE<br>FINISH: A3<br>SCALE: 1.5:1<br>DO NOT SCALE DRAWING |  |
|   |  | SHEET 1 OF 1   |  |

8

7

6

5

4

3

2

1

A

B

C

D

E

F

H

G