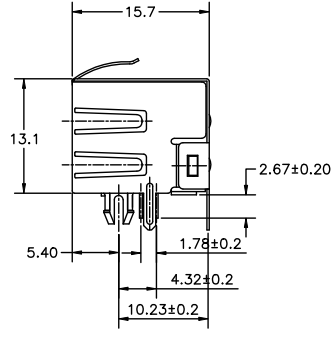
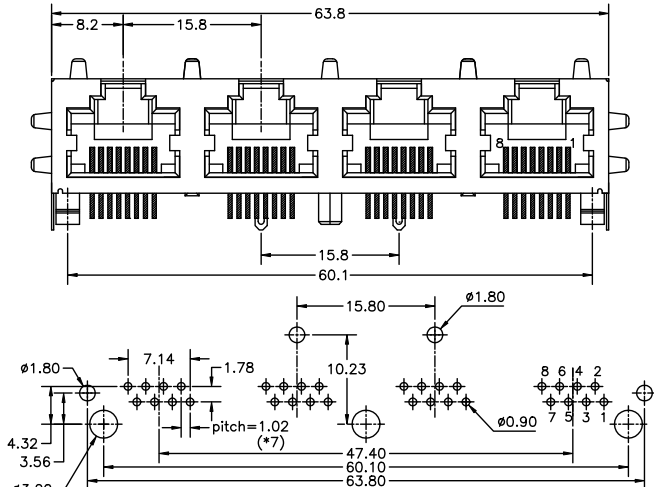


A1RFRD10

REVISION RECORD				
REV	ECO	DESCRIPTION	DRFT	CHKD



NOTES:
ELECTRICAL:

- VOLTAGE RATING : 125 VAC RMS.
- CURRENT RATING : 1.5 AMP.
- CONTACT RESISTANCE : 30 MILLIOHMS MAX.
- INSULATION RESISTANCE: 1000 MEGOHMS MIN @ 500 VDC.
- DIELECTRIC STRENGTH : 1000 VAC RMS 60Hz, 1MIN.
- OPERATING: 750 CYCLES MIN.

MECHANICAL:

- HOUSING MATERIAL : FR52 UL94V-0. COLOR-BLACK.
- INSERT MATERIAL : FR52 UL94V-0. COLOR-BLACK.
- BACK PLATE MATERIAL : FR52. COLOR-BLACK.
- SHIELD MATERIAL : COPPER ALLOY 0.25mm THICKNESS PLATING NI.
- CONTACT MATERIAL : PHOSPHOR BRONZE 0.35mm THICKNESS OR $\phi 0.46$ mm.
- PLATING : GOLD PLATING OVER NICKEL.
- PCB RETENTION PRE-SOLDER : 1 LB MIN.
- PCB RETENTION POST-SOLDER: 10 LBS MIN.

ENVIRONMENTAL:

- STORAGE : -40°C TO +85°C.
 - OPERATION: 0°C TO 70°C.
 - WAVE SOLDERING TEMPERATURE: 255~265°C (5~10 SECONDS)
- MATES WITH MODULAR PLUG CONFORMING TO
FCC PART 68, SUBPART F.
CUL FILE NO. E163191

ROHS PART NUMBER: E5J88 - 6 X X J X X-L

- NO TAB
- TOP TABS.
- SIDE TABS.
- TOP TABS & SIDE TABS.

- PLATING: 1-3u", 3-15u", 2-6u", 4-30u", 5-50u"
- B-NI SHIELD STAMPED PIN.
- F-NI SHIELD ROUND PIN($\phi 0.46$).
- W/O LOGO, A05-0130-L
- 4-4 PORTS W/O MIDDLE POLE
- C-4 PORTS W/ MIDDLE POLE

MM (INCH) TOLERANCES EXCEPT AS NOTED .0 ± 0.2 .00 ± 0.15 .000 ± 0.075 ANGLES ± THIRD ANGLE PROJECTION		DFTO Joke CHKD SMWY MFO APPL LUSHENG MATERIAL: QTY: FINISH: SCALE:	DATE 07/23/05 DATE 2005/07/25 DATE 2005/07/25 DATE 2005/07/25	FULL RISE ELECTRONIC CO., LTD TITLE RJ45 W/O LED JACK 4 PORTS DRAWING NO. GE5J3A18-LA /PART NO. SEE NOTE DO NOT SCALE DRAWING	SHEET 1 OF 1
---	--	---	--	--	--------------

8 | 7 | 6 | 5 | 4 | 3 | 2 | 1

H
G
F
E
D
C
B
A