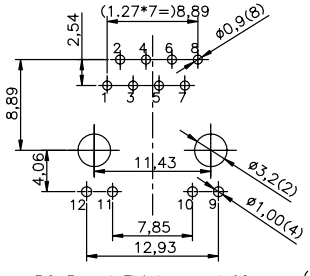
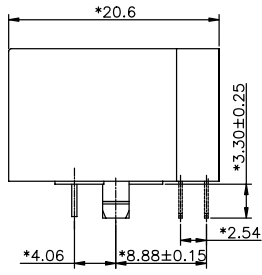
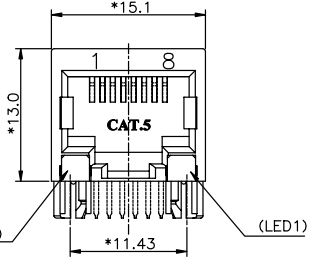


A1RFRD10



PC Board Thickness=1.60mm (LED2)
PC Board Layout Component Side Shown



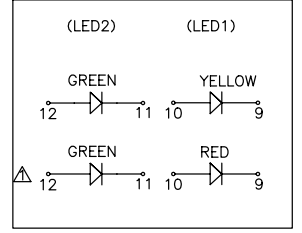
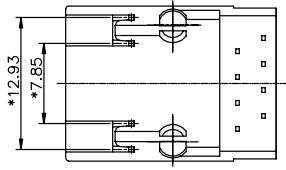
REVISION RECORD				
REV	ECO	DESCRIPTION	DRFT	CHKD
△		ADD PART NO.	Yoon 11/02/05	

NOTE:

ELECTRICAL:

- VOLTAGE RATING : 125 VAC RMS.
- CURRENT RATING : 1.5 AMP.
- CONTACT RESISTANCE : 60 MILLIOHMS MAX.
- INSULATION RESISTANCE : 1000 MEGOHMS MIN @ 500 VDC.
- DIELECTRIC STRENGTH : 1000 VAC RMS 60Hz, 1MIN.
- CATEGORY 5 CHARACTERISTIC:

Frequency	Near-End Cross Talk dB, MIN.	Return Loss dB, MIN.	Attenuation dB, MAX.
1.0 MHZ	65	23	0.1
4.0 MHZ	65	23	0.1
8.0 MHZ	62	23	0.1
10.0 MHZ	60	23	0.1
16.0 MHZ	56	23	0.2
20.0 MHZ	54	23	0.2
25.0 MHZ	52	14	0.2
31.25 MHZ	50	14	0.2
62.5 MHZ	44	14	0.3
100.0 MHZ	40	14	0.4



MECHANICAL:

- HOUSING MATERIAL : PBT+G.F30%. UL94V-0. COLOR BLACK
- INSERT : PBT+G.F30%. UL94V-0. COLOR BLACK
- PCB : FR-4, 0.6mm THICKNESS, DOUBLE SIDE
- CONTACT MATERIAL : PHOSPHOR BRONZE t=0.35mm.
- PLATING : GOLD PLATING OVER NICKEL.
- OPERATING LIFE : 750 CYCLES MIN.

ENVIRONMENTAL:

- STORAGE : -40°C TO +85°C.
- OPERATION : -40°C TO +85°C.
- WAVE SOLDERING TEMPERATURE: 230°C ~250°C (5~10 SECONDS).
- RoHS COMPLIANT.

MATES WITH MODULAR PLUG CONFORMING TO FCC PART 68, SUBPART F.

PART NUMBER: **E6588-600X2X-L**

△ J-LED1:RED LED2:GREEN
P-LED1:YELLOW LED2:GREEN

PLATING: 1- 3u" 4-30u"
2- 6u" 5-50u"
3-15u"

MM (INCH)	DFTO SAMMY	DATE 09/30/03
TOLERANCES EXCEPT AS NOTED	CHKDASHLEY	DATE 2006/7/21
M/M	MFO	DATE
.0 ± 0.15 ±	APPVLLUSHENG	DATE 2006/7/21
.00 ± 0.075 ±	MATERIAL :	
.000 ± 0.05 ±	FINISH :	
ANGLES ± 0.5	QTY :	
THIRD ANGLE PROJECTION	SCALE :	

	RoHS Compliant
FULL RISE ELECTRONIC CO., LTD	
TITLE 20.57 C5 LED JACK	
DRAWING NO. GE653024-LC	SIZE REV A3 1
DO NOT SCALE DRAWING	
SHEET X	OF Y

8 | 7 | 6 | 5 | 4 | 3 | 2 | 1

H
G
F
E
D
C
B
A