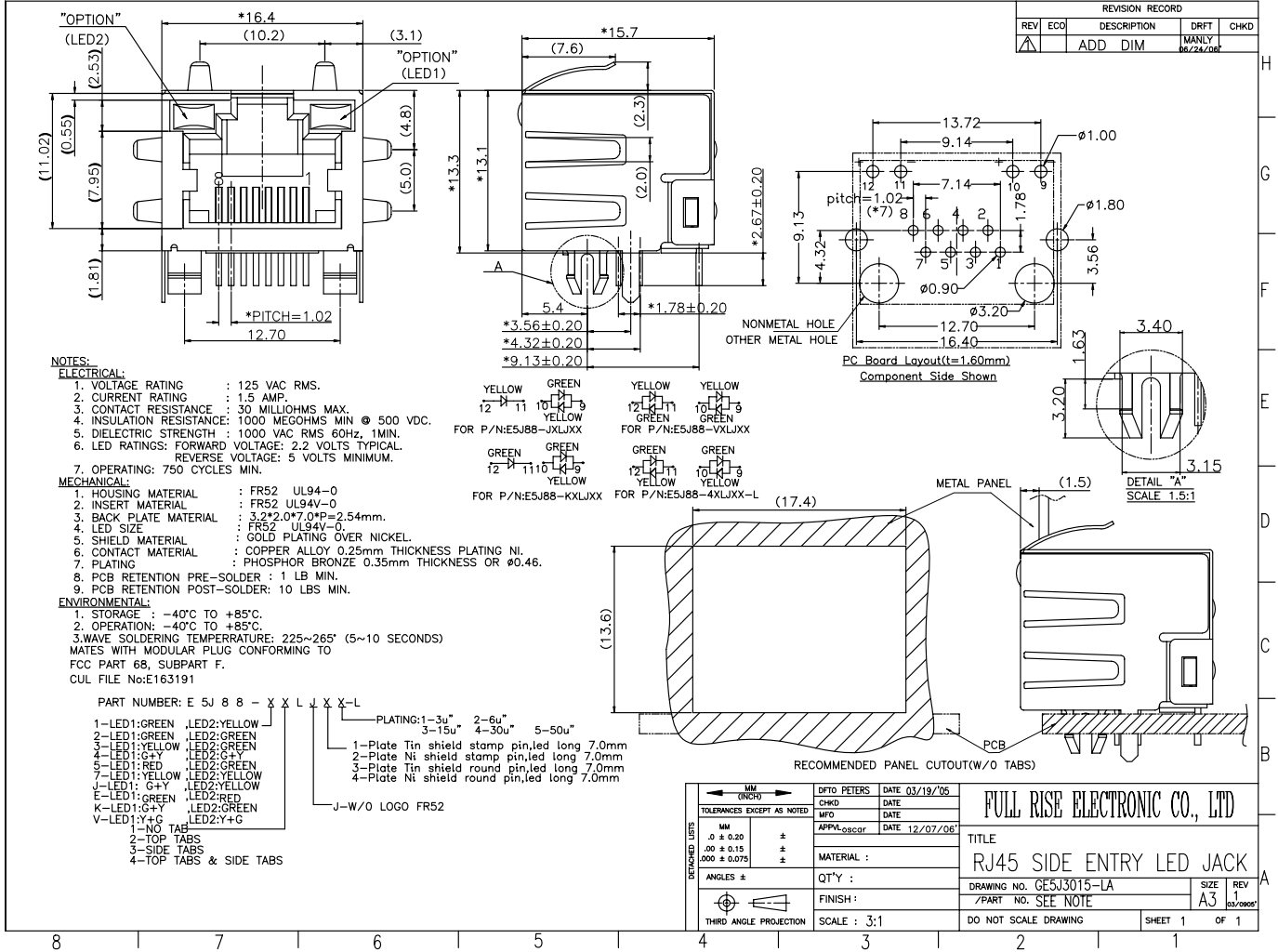
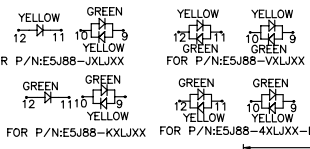


DIRFRD006



REVISION RECORD				
REV	ECO	DESCRIPTION	DRFT	CHKD
1		ADD DIM	MANLY	06/24/06

- NOTES:**
- ELECTRICAL:**
- VOLTAGE RATING : 125 VAC RMS.
 - CURRENT RATING : 1.5 AMP.
 - CONTACT RESISTANCE : 30 MILLIOHMS MAX.
 - INSULATION RESISTANCE: 1000 MEGOHMS MIN @ 500 VDC.
 - DIELECTRIC STRENGTH : 1000 VAC RMS 60Hz, 1MIN.
 - LED RATINGS: FORWARD VOLTAGE: 2.2 VOLTS TYPICAL. REVERSE VOLTAGE: 5 VOLTS MINIMUM.
 - OPERATING: 750 CYCLES MIN.
- MECHANICAL:**
- HOUSING MATERIAL : FR52 UL94-0
 - INSERT MATERIAL : FR52 UL94V-0
 - BACK PLATE MATERIAL : 3.2*2.0*7.0*P=2.54mm.
 - LED SIZE : FR52 UL94V-0.
 - SHIELD MATERIAL : GOLD PLATING OVER NICKEL.
 - CONTACT MATERIAL : COPPER ALLOY 0.25mm THICKNESS PLATING NI.
 - PLATING : PHOSPHOR BRONZE 0.35mm THICKNESS OR Ø0.46.
 - PCB RETENTION PRE-SOLDER : 1 LB MIN.
 - PCB RETENTION POST-SOLDER: 10 LBS MIN.
- ENVIRONMENTAL:**
- STORAGE : -40°C TO +85°C.
 - OPERATION: -40°C TO +85°C.
 - WAVE SOLDERING TEMPERATURE: 225~265° (5~10 SECONDS)
- MATES WITH MODULAR PLUG CONFORMING TO FCC PART 68, SUBPART F.
CUL FILE No:E163191



- PART NUMBER: E 5J 8 8 - X X L X X L
- 1-LED1:GREEN LED2:YELLOW
 - 2-LED1:GREEN LED2:GREEN
 - 3-LED1:YELLOW LED2:GREEN
 - 4-LED1:G+Y LED2:G+Y
 - 5-LED1:RED LED2:GREEN
 - 7-LED1:YELLOW LED2:YELLOW
 - J-LED1: G+Y LED2:YELLOW
 - E-LED1:GREEN LED2:RED
 - K-LED1:G+Y LED2:GREEN
 - V-LED1:Y+G LED2:Y+G
- 1-NO TABS
2-TOP TABS
3-SIDE TABS
4-TOP TABS & SIDE TABS
- PLATING:1-3u" 2-6u" 3-15u" 4-30u" 5-50u"
- 1-Plate Tin shield stamp pin,led long 7.0mm
 - 2-Plate Ni shield stamp pin,led long 7.0mm
 - 3-Plate Tin shield round pin,led long 7.0mm
 - 4-Plate Ni shield round pin,led long 7.0mm
- J-W/O LOGO FR52

MM (INCH)		DFTO PETERS		DATE 03/19/06	
TOLERANCES EXCEPT AS NOTED					
MM	±	CHKD	DATE	WFO	DATE
0 ± 0.20	±	APPV:oscar	DATE 12/07/06		
.00 ± 0.15	±	MATERIAL :			
.000 ± 0.075	±	QTY :			
ANGLES ±		FINISH :			
THIRD ANGLE PROJECTION		SCALE : 3:1			

FULL RISE ELECTRONIC CO., LTD	
TITLE	
RJ45 SIDE ENTRY LED JACK	
DRAWING NO. GE5J3015-LA	SIZE REV
/PART NO. SEE NOTE	A3 1
DO NOT SCALE DRAWING	SHEET 1 OF 1

8 | 7 | 6 | 5 | 4 | 3 | 2 | 1