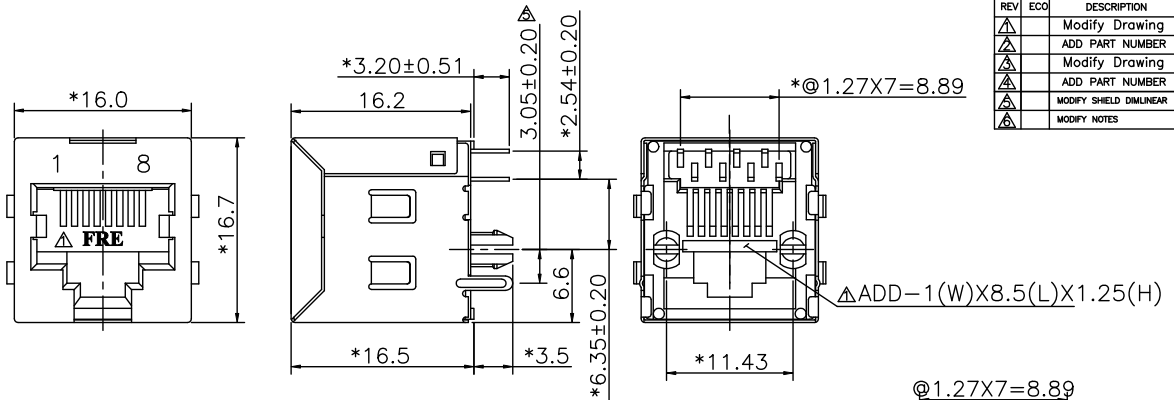


DIRFRD006



REV	ECO	DESCRIPTION	DRFT	CHKD
1		Modify Drawing	LFE	4/15/02
2		ADD PART NUMBER	SMW	06/15/02
3		Modify Drawing	CHP	7/23/03
4		ADD PART NUMBER	SMW	05/18/04
5		MODIFY SHIELD DIMLINEAR	LJW	05/17/04
6		MODIFY NOTES	Amo	10/22/04

**NOTES:**

**ELECTRICAL:**

- VOLTAGE RATING : 125 VAC RMS.
- CURRENT RATING : 1.5 AMP.
- CONTACT RESISTANCE : 30 MILLIOHMS MAX.
- INSULATION RESISTANCE: 1000 MEGOHMS MIN @ 500 VDC.
- DIELECTRIC STRENGTH : 1000 VAC RMS 60Hz, 1MIN.

**MECHANICAL:**

- HOUSING MATERIAL : GLASS FILLED POLYESTER UL94V-0.
- CONTACT MATERIAL : PHOSPHOR BRONZE t=0.35mm.
- PLATING : GOLD PLATING OVER NICKEL.
- OPERATING LIFE : 750 CYCLES MIN.
- PCB RETENTION PRE-SOLDER : 1 LB MIN.
- PCB RETENTION POST-SOLDER: 10 LBS MIN.

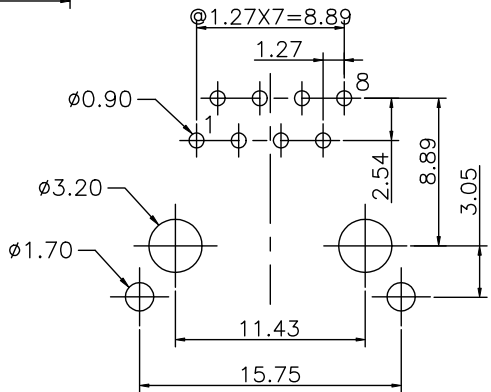
**ENVIRONMENTAL:**

- STORAGE : -40°C TO +85°C.
  - OPERATION: -40°C TO +85°C.
- MATES WITH MODULAR PLUG CONFORMING TO FCC PART 68, SUBPART F.  
CUL FILE NO. E163191  
PART NUMBER: E5288-3X0X4X

SHIELD PLATING:

GOLD PLATING:

- |                                 |                 |
|---------------------------------|-----------------|
| 1- TIN PLATING,W/ SIDE TABS     | 1- 3u" 2- 6u"   |
| 2- NICKEL PLATING,W/ SIDE TABS  | 3- 15u" 4- 30u" |
| S- TIN PLATING,W/O SIDE TABS    | 5- 50u"         |
| T- NICKEL PLATING,W/O SIDE TABS | 0-A06-0100 (BK) |
|                                 | 1-A06-0080 (BK) |



PC Board Layout Component Side Shown

MM (INCH)		DATE	DATE	FULL RISE ELECTRONIC CO., LTD	
TOLERANCES EXCEPT AS NOTED	MM	DATE	DATE	TITLE	
	±	7/8/97	2004/11/17	RJ45 TOP ENTRY PCB MODULAR JACK(DIP TYPE)	
	±	APPLYUSHENG	DATE2004/11/17	DRAWING NO. GE523014	
	±			/PART NO. SEE NOTE	
	±			DO NOT SCALE DRAWING	
ANGLES ±	QTY :			SHEET X OF Y	
THIRD ANGLE PROJECTION	FINISH :			SIZE REV	
	SCALE : 3:1			A3 6	

8 | 7 | 6 | 5 | 4 | 3 | 2 | 1

H  
G  
F  
E  
D  
C  
B  
A