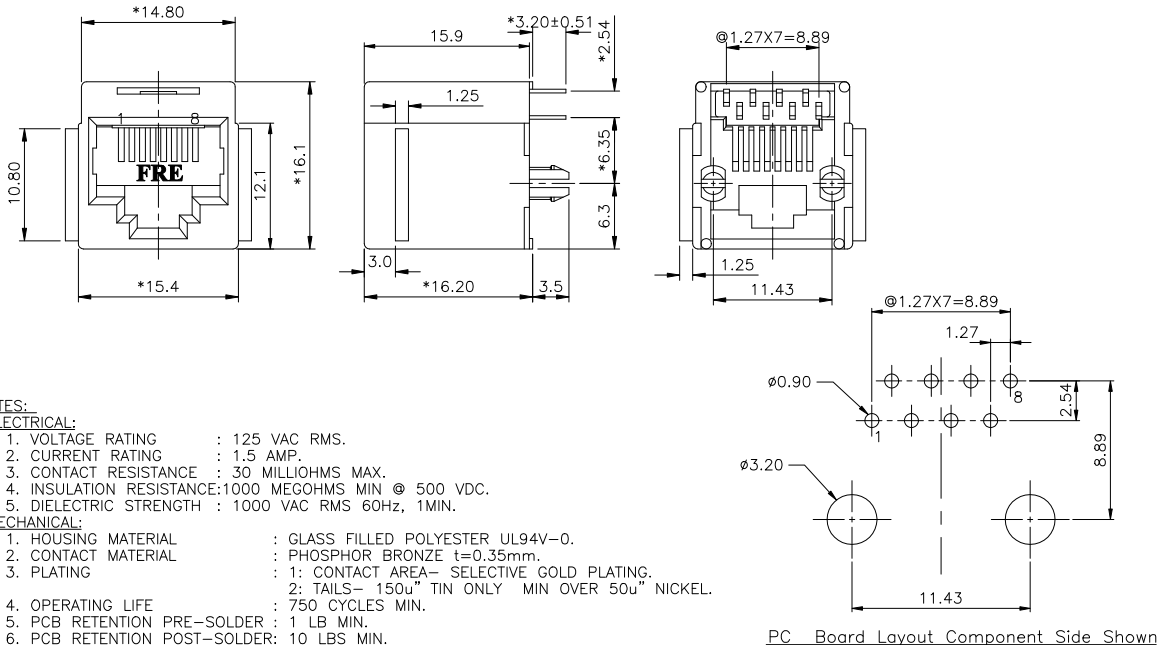


D1RFRD006

REVISION RECORD				
REV	ECO	DESCRIPTION	DRFT	CHKD
△		Add P/N	jammy	06/09/04



NOTES:

ELECTRICAL:

1. VOLTAGE RATING : 125 VAC RMS.
2. CURRENT RATING : 1.5 AMP.
3. CONTACT RESISTANCE : 30 MILLIOHMS MAX.
4. INSULATION RESISTANCE: 1000 MEGOHMS MIN @ 500 VDC.
5. DIELECTRIC STRENGTH : 1000 VAC RMS 60Hz, 1MIN.

MECHANICAL:

1. HOUSING MATERIAL : GLASS FILLED POLYESTER UL94V-0.
2. CONTACT MATERIAL : PHOSPHOR BRONZE t=0.35mm.
3. PLATING : 1: CONTACT AREA- SELECTIVE GOLD PLATING.
2: TAILS- 150u" TIN ONLY MIN OVER 50u" NICKEL.
4. OPERATING LIFE : 750 CYCLES MIN.
5. PCB RETENTION PRE-SOLDER : 1 LB MIN.
6. PCB RETENTION POST-SOLDER: 10 LBS MIN.

ENVIRONMENTAL:

1. STORAGE : -40°C TO +85°C.
2. OPERATION: 0°C TO 70°C.

MATES WITH MODULAR PLUG CONFORMING TO FCC PART 68, SUBPART F.

CUL FILE NO. E163191

PART NUMBER: E5268-X00BXX-L



PC Board Layout Component Side Shown

← MM (INCH) → TOLERANCES EXCEPT AS NOTED MM .00 ± 0.15 .00 ± 0.075 ANGLES ± 0.5 THIRD ANGLE PROJECTION		DFTO 01/09/04 CHKD 02/04/04 MFD DATE APPVL G2H DATE 2004/6/9 MATERIAL : QTY : FINISH : SCALE :	FULL RISE ELECTRONIC CO., LTD TITLE (IMPROVED TYPE&LEAD_FREE) RJ45 TOP ENTRY PCB JACK DRAWING NO. GE523108 /PART NO. SEE NOTE DO NOT SCALE DRAWING	SIZE REV A3 1 SHEET OF
---	--	---	---	-------------------------------------

8 | 7 | 6 | 5 | 4 | 3 | 2 | 1

H
G
F
E
D
C
B
A