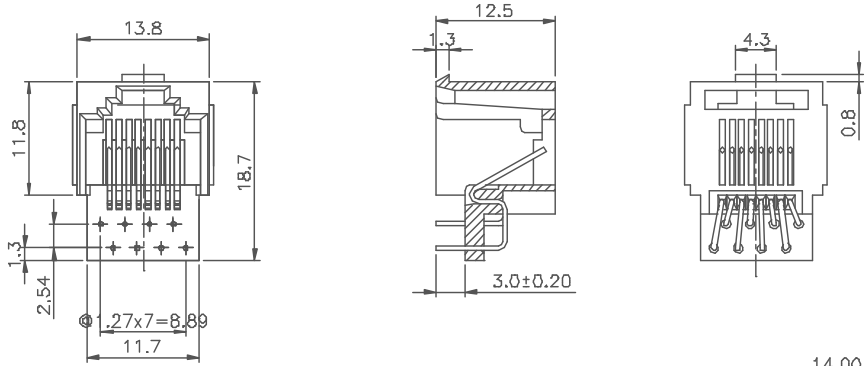


A4491091

REVISION RECORD				
REV	ECO	DESCRIPTION	DRAFT	CHKD

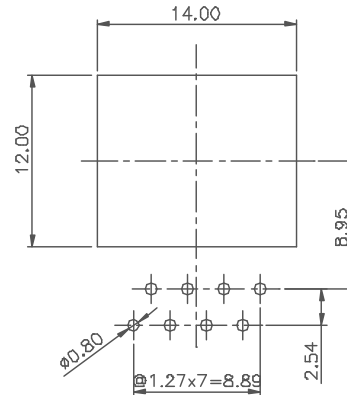


NOTES:

- ELECTRICAL;**
- VOLTAGE RATING : 125 VAC RMS.
 - CURRENT RATING : 1.5 AMP.
 - CONTACT RESISTANCE : 30 MILLIOHMS MAX.
 - INSULATION RESISTANCE : 1000 MEGOHMS MIN @ 500 VDC.
 - DIELECTRIC STRENGTH : 1000 VAC RMS 60Hz, 1MIN.
- MECHANICAL:**
- HOUSING MATERIAL : GLASS FILLED POLYESTER UL94V-0.
 - CONTACT MATERIAL : PHOSPHOR BRONZE $\phi 0.46$ mm.
 - PLATING : GOLD PLATING OVER NICKEL.
 - OPERATING LIFE : 750 CYCLES MIN.
 - PCB RETENTION PRE-SOLDER : 1 LB MIN.
 - PCB RETENTION POST-SOLDER : 10 LBS MIN.
- ENVIRONMENTAL:**
- STORAGE : -40°C TO +85°C.
 - OPERATION : 0°C TO 70°C.

MATES WITH MODULAR PLUG CONFORMING TO FCC PART 68, SUBPART F.
 PART NUMBER: E528X-S00XX

- | | | |
|-------|-----------------|-----------------|
| 2- 2C | 1- 3u* | 2- 6u* |
| 4- 4C | 3- 15u* | 4- 30u* |
| 6- 6C | 5- 50u* | 6- Pd20u* |
| 8- 8C | 0- A06-0100 BK. | 4- A06-0110 GY. |



PC Board Layout Component Side Shown

DIMENSIONS LIST DIM (INCH) : TOLERANCES EXCEPT AS NOTED .000 ± 0.015 .000 ± 0.015 ANGLES : THIRD ANGLE PROJECTION	DFTO: GANEY CHKD: YUAN MFD: LHM APPV: EDWARD	DATE: 5/22/00* DATE: 5/22/00* DATE: 5/22/00* DATE: 5/22/00*	FULL RISE ELECTRONIC CO., LTD TITLE: BOTTOM ENTRY PCB JACK 8P DRAWING NO.: GE523A27 /PART NO.: SEE NOTE SCALE: 1.25:1 DO NOT SCALE DRAWING	SHEET 1 OF 1
---	---	--	---	--------------