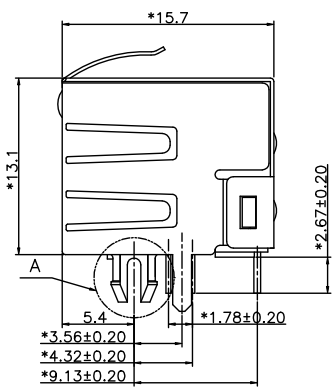
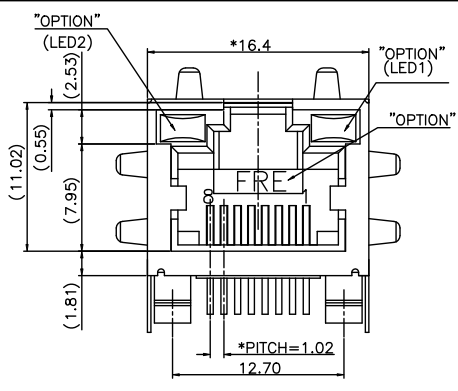


DIRFRD006

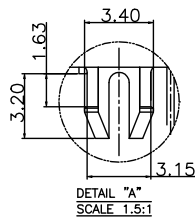
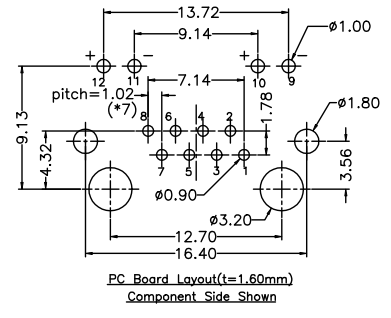
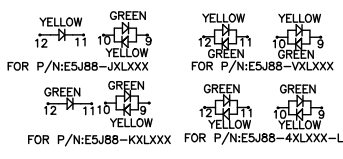


REVISION RECORD				
REV	ECD	DESCRIPTION	DRFT	CHKD

- NOTES:**
- ELECTRICAL:**
- VOLTAGE RATING : 125 VAC RMS.
  - CURRENT RATING : 1.5 AMP.
  - CONTACT RESISTANCE : 30 MILLIOHMS MAX.
  - INSULATION RESISTANCE: 1000 MEGOHMS MIN @ 500 VDC.
  - DIELECTRIC STRENGTH : 1000 VAC RMS 60HZ, 1MIN.
  - LED RATINGS: FORWARD VOLTAGE: 2.2 VOLTS TYPICAL. REVERSE VOLTAGE: 5 VOLTS MINIMUM.
  - OPERATING: 750 CYCLES MIN.

- MECHANICAL:**
- HOUSING MATERIAL : PBT+30%GF UL94V-0. COLOR-BLACK.
  - INSERT MATERIAL : PBT+30%GF UL94V-0. COLOR-BLACK.
  - BACK PLATE MATERIAL : PBT+30%GF COLOR-BLACK.
  - LED SIZE : 3.2\*2.0\*7.0mm±0.25mm.
  - SHIELD MATERIAL : COPPER ALLOY 0.25mm THICKNESS PLATING NI.
  - CONTACT MATERIAL : PHOSPHOR BRONZE 0.35mm THICKNESS OR Ø0.46.
  - PLATING : GOLD PLATING OVER NICKEL.
  - PCB RETENTION PRE-SOLDER : 1 LB MIN.
  - PCB RETENTION POST-SOLDER: 10 LBS MIN.

- ENVIRONMENTAL:**
- STORAGE : -40°C TO +85°C.
  - OPERATION: -40°C TO +85°C.
  - WAVE SOLDERING TEMPERATURE: 230~250°(3~5 SECONDS)
- MATES WITH MODULAR PLUG CONFORMING TO FCC PART 68, SUBPART F.  
CUL FILE No:E163191



- LEAD FREE PART NUMBER: E 5J 8 8 - X X L X X X - L
- 1-LED1:GREEN .LED2:YELLOW
  - 2-LED1:GREEN .LED2:GREEN
  - 3-LED1:YELLOW .LED2:GREEN
  - 4-LED1:G+Y .LED2:G+Y
  - 5-LED1:RED .LED2:GREEN
  - 7-LED1:YELLOW .LED2:YELLOW
  - J-LED1: G+Y .LED2:YELLOW
  - E-LED1:GREEN .LED2:RED
  - K-LED1:G+Y .LED2:GREEN
  - V-LED1:Y+G .LED2:Y+G
  - 1-NO TABS
  - 2-TOP TABS
  - 3-SIDE TABS
  - 4-TOP TABS & SIDE TABS
- PLATING: 1-3u" 2-6u" 3-15u" 4-30u" 5-50u"
- 1-Plate Tin shield stamp pin, led long 7.0mm
  - 2-Plate Ni shield stamp pin, led long 7.0mm
  - 3-Plate Tin shield round pin, led long 7.0mm
  - 4-Plate Ni shield round pin, led long 7.0mm
- 0-W/O LOGO PBT+30%  
2-W/ "FRE" LOGO

DETACHED LISTS DIM (UNITS) TOLERANCES EXCEPT AS NOTED .00 ± 0.20 ± .00 ± 0.15 ± .000 ± 0.075 ± ANGLES ± THIRD ANGLE PROJECTION	DFTO PETERS DATE 03/25/05 CHKDNAME DATE 2005/2/25 MFO DATE APPVLUSING DATE 2005/2/25	FULL RISE ELECTRONIC CO., LTD		
	MATERIAL : QTY : FINISH :	TITLE RJ45 SIDE ENTRY LED JACK		
	SCALE : 3:1	DRAWING NO. GE5J3015-LC /PART NO. SEE NOTE	SIZE A3	REV 0 03/25/05
	DO NOT SCALE DRAWING	SHEET 1 OF 1	DO NOT SCALE DRAWING	

8 7 6 5 4 3 2 1