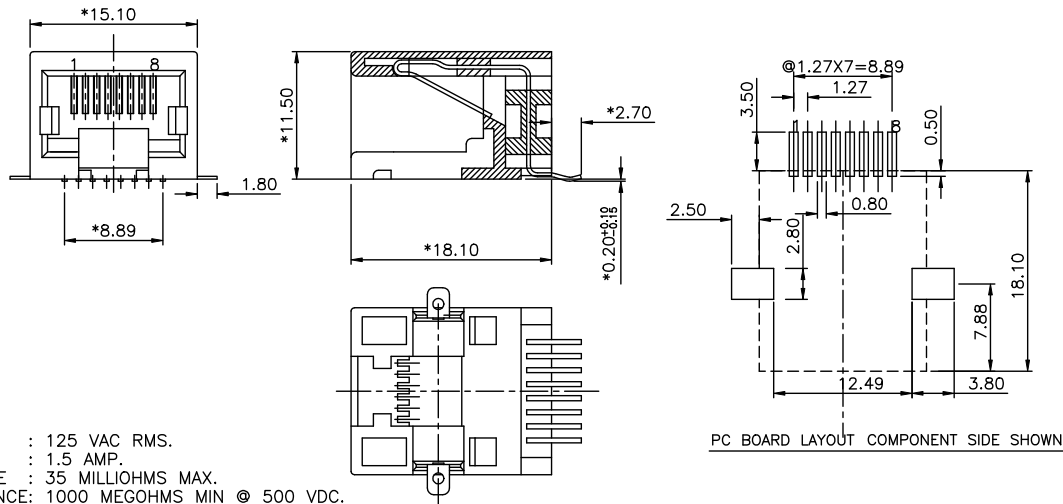


D1RFRD006

REVISION RECORD				
REV	ECO	DESCRIPTION	DRFT	CHKD
△		Drawing Modification	JMY	1/15/06



**NOTES:**

**ELECTRICAL:**

1. VOLTAGE RATING : 125 VAC RMS.
2. CURRENT RATING : 1.5 AMP.
3. CONTACT RESISTANCE : 35 MILLIOHMS MAX.
4. INSULATION RESISTANCE: 1000 MEGOHMS MIN @ 500 VDC.
5. DIELECTRIC STRENGTH : 1000 VAC RMS 60HZ, 1MIN.

**MECHANICAL:**

1. HOUSING MATERIAL : FR52 UL94V-0 COLOR: BK
2. CONTACT MATERIAL : PHOSPHOR BRONZE t=0.35mm.
3. PLATING : 1: CONTACT AREA- SELECTIVE GOLD PLATING.  
2: TAILS- PLATED TIN OVER NICKEL.
4. OPERATING LIFE : 750 CYCLES MIN.
5. PCB RETENTION PRE-SOLDER : 1 LB MIN.
6. PCB RETENTION POST-SOLDER: 10 LBS MIN.

**ENVIRONMENTAL:**

1. STORAGE : -40°C TO +85°C.
2. OPERATION: -40°C TO +85°C.
3. IR REFLOW SOLDERING TEMPERATURE: 255°C TO 265°C (5-10 SECONDS).

MATES WITH MODULAR PLUG CONFORMING TO

FCC PART 68, SUBPART F.

ROHS PART NUMBER: E5388-EH05YX-L

△	Cavities/reel	Pieces/reel	Pieces/carton
	150	130	1300

- 1-30"
- 2-6U"
- 3-15U"
- 4-30U"
- 5-50U"

MM (INCH)		DRTO SAMMY	DATE 04/16/05	FULL RISE ELECTRONIC CO., LTD	
TOLERANCES EXCEPT AS NOTED		CHUDJAMY	DATE 2006/1/21		
MM		MFO	DATE	TITLE	
.0	±0.20	APPLV LUSHENG	DATE 2006/1/21	SIDE ENTRY 8P(SMT)	
.00	±0.15	MATERIAL :		DRAWING NO. GE533049-LA	
.000	±0.075	FINISH :		/PART NO. SEE NOTE	
ANGLES ±		QTY :		SIZE REV	
THIRD ANGLE PROJECTION		SCALE : 3:1		A3 1	
DO NOT SCALE DRAWING				SHEET X OF Y	

8 | | | 7 | | | 6 | | | 5 | | | 4 | | | 3 | | | 2 | | | 1

H  
G  
F  
E  
D  
C  
B  
A