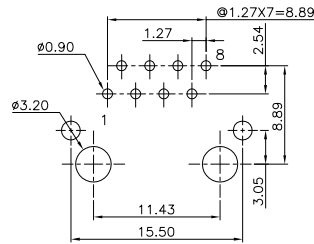
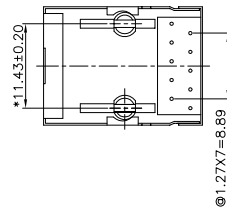
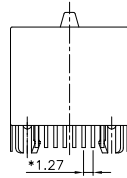
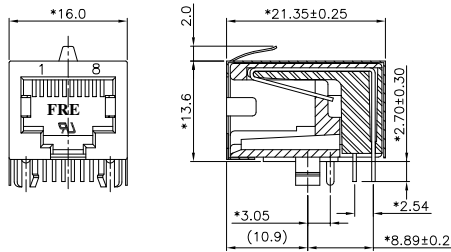


D1RFRD006

REVISION RECORD				
REV	ECO	DESCRIPTION	DRFT	CHKD
△		ADD P/ N	WYJ	06/09/05



PC Board Layout Component Side Shown

NOTES:

ELECTRICAL:

- VOLTAGE RATING : 125 VAC RMS.
- CURRENT RATING : 1.5 AMP.
- CONTACT RESISTANCE : 45 MILLIOHMS MAX.
- INSULATION RESISTANCE: 1000 MEGOHMS MIN @ 500 VDC.
- DIELECTRIC STRENGTH : 1000 VAC RMS 60Hz, 1MIN.

MECHANICAL:

- HOUSING & INSERT MATERIAL : PA9T & NYLON+30%GF UL94V-0.
- CONTACT MATERIAL : PHOSPHOR BRONZE ϕ 0.46mm.
- PLATING : GOLD PLATING OVER NICKEL.
- OPERATING LIFE : 750 CYCLES MIN.
- PCB RETENTION PRE-SOLDER : 1 LB MIN.
- PCB RETENTION POST-SOLDER: 10 LBS MIN.
- SHIELD PLATING : NICKEL PLATING OVER BRASS.

ENVIRONMENTAL:

- STORAGE : -40°C TO +85°C.
- OPERATION: -40°C TO +85°C.
- WAVE SOLDERING TEMPERATURE: 255~265°C (5~10 SECONDS)

MATES WITH MODULAR PLUG CONFORMING TO

FCC PART 68, SUBPART F.

CUL FILE NO. E163191

PART NUMBER: E590X-2X0XXX-L

8-8C 1-10C 1-3u" 2-6u" 3-15u" 4-30u"
 5-50u" 6-Pd20u" 7-Pd30u" 8-Pd10u"
 SHIELD: W3-A05-1580 PA9T BK,AFTER LEG 3.05, W/O
 5- Nickel PANEL STOP W/ "FRE" LOGO
 △7Q-A05-0130 BK

MM (INCH)		DFTO QSJ	DATE 5/06/05	FULL RISE ELECTRONIC CO., LTD	
TOLERANCES EXCEPT AS NOTED		CHKD	DATE	TITLE	
		MFD	DATE	20.57 PCB JACK 10P	
MM		APPLV XLF	DATE 06/13/05	DRAWING NO. GE593125-LA	
.0 ±0.20		MATERIAL :		SIZE A3	
.00 ±0.15		QT'Y :		REV 1	
.000 ±0.075		FINISH :		/PART NO. SEE NOTE	
ANGLES ±		SCALE :		DO NOT SCALE DRAWING	
THIRD ANGLE PROJECTION		SHEET X		OF Y	

8 | 7 | 6 | 5 | 4 | 3 | 2 | 1

H
G
F
E
D
C
B
A