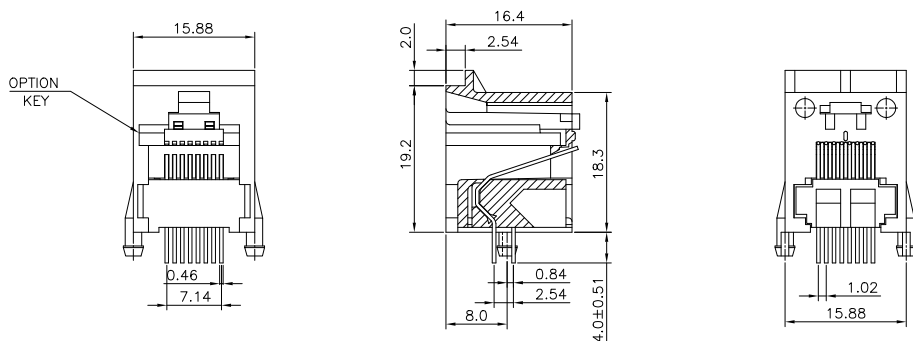


E1RFRD03

REVISION RECORD				
REV	ECO	DESCRIPTION	DRFT	CHKD



NOTES:

ELECTRICAL:

- VOLTAGE RATING : 125 VAC RMS.
- CURRENT RATING : 1.5 AMP.
- CONTACT RESISTANCE : 30 MILLIOHMS MAX.
- INSULATION RESISTANCE: 1000 MEGOHMS MIN @ 500 VDC.
- DIELECTRIC STRENGTH : 1000 VAC RMS 60Hz, 1MIN.

MECHANICAL:

- HOUSING MATERIAL : GLASS FILLED POLYESTER UL94V-0.
- CONTACT MATERIAL : PHOSPHOR BRONZE $\phi 0.46\text{mm}$.
- PLATING : GOLD PLATING OVER NICKEL.
- OPERATING LIFE : 750 CYCLES MIN.
- PCB RETENTION PRE-SOLDER : 1 LB MIN.
- PCB RETENTION POST-SOLDER: 10 LBS MIN.

ENVIRONMENTAL:

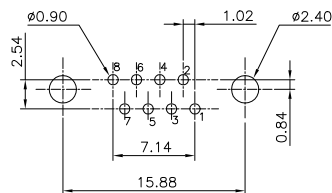
- STORAGE : -40°C TO $+85^{\circ}\text{C}$.
- OPERATION: 0°C TO 70°C .

MATES WITH MODULAR PLUG CONFORMING TO
FCC PART 68, SUBPART F.

CUL FILE NO. E163191

PART NUMBER: E5488-000XXX

- | | | |
|--------------|-----------|-----------|
| 0-BLACK | 1- 3u" | 2- 6u" |
| 1-GRAY | 3-15u" | 4-30u" |
| 4-GY(26833#) | 5-50u" | 6-Pd 20u" |
| | 1-W/O KEY | |
| | 2-W/ KEY | |



PC Board Layout
Component Side Shown

MM (INCH)		DFTO CXQ	DATE 6/15/04*	FULL RISE ELECTRONIC CO., LTD	
TOLERANCES EXCEPT AS NOTED		CHKD	DATE	TITLE	
MM		WFO	DATE	RJ45 PCB JACK	
.0 ± 0.2	±	APPLV XLF	DATE 06/15/04	DRAWING NO. GE543P01	
.00 ± 0.15	±	MATERIAL :		SIZE A3	
.000 ± 0.075	±	FINISH :		REV 0	
ANGLES ± 0.5		QTY :		DRAWING NO. GE543P01	
THIRD ANGLE PROJECTION		SCALE : 2:1		/PART NO. SEE NOTES	
			DO NOT SCALE DRAWING		SHEET X OF Y

8 | 7 | 6 | 5 | 4 | 3 | 2 | 1

H
G
F
E
D
C
B
A