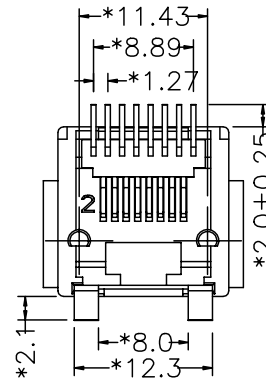
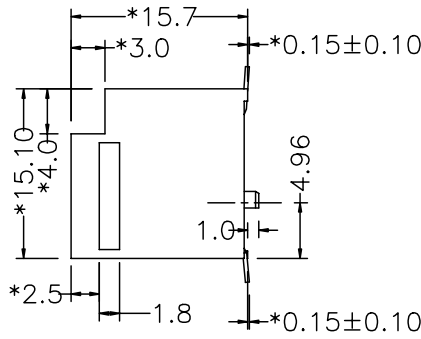
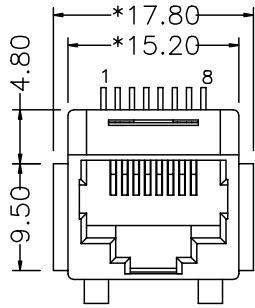


A1RFRD10

REVISION RECORD				
REV	ECO	DESCRIPTION	DRFT	CHKD



NOTES:

ELECTRICAL:

- VOLTAGE RATING : 150 VAC RMS.
- CURRENT RATING : 1.5 AMP.
- CONTACT RESISTANCE : 30 MILLIOHMS MAX.
- INSULATION RESISTANCE: 1000 MEGOHMS MIN @ 500 VDC.
- DIELECTRIC STRENGTH : 1000 VAC RMS 60Hz, 1MIN.

MECHANICAL:

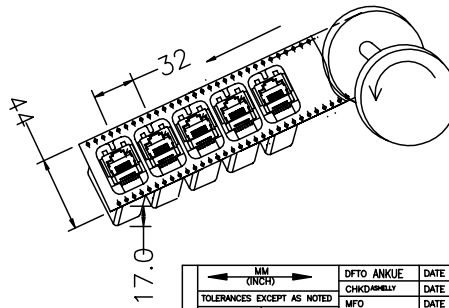
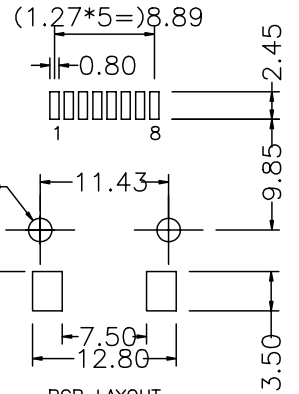
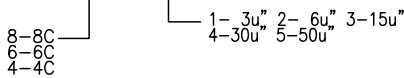
- HOUSING MATERIAL : NYLON+GF30% UL94V-0.
HOUSING COLOR : BLACK
- CONTACT MATERIAL : PHOSPHOR BRONZE T=0.35mm.
- PLATING : GOLD PLATING OVER NICKEL
- OPERATING LIFE : 750 CYCLES MIN.
- PCB RETENTION PRE-SOLDER : 1 LB MIN.
- PCB RETENTION POST-SOLDER: 10 LBS MIN.

ENVIRONMENTAL:

- STORAGE : -40°C TO +85°C.
- OPERATION : -40°C TO +85°C.
- IR REFLOW PEAK SOLDERING TEMPERATURE : 255~265°C 5~10 SECONDS
- RoHS COMPLIANT.

MATES WITH MODULAR PLUG CONFORMING TO FCC PART 68, SUBPART F.

RoHS PART NUMBER: E528X-7007SX-L



MM	(INCH)	DFTO ANKUE	DATE 06/28/06'
TOLERANCES EXCEPT AS NOTED			
MM	±	CHKD/APPVLY	DATE 2006/4/28
.0 ± 0.2	±	MFO	DATE
.00 ± 0.15	±	APPLV LUBRDO	DATE 2006/4/28
.000 ± 0.075	±	MATERIAL :	
ANGLES ± 0.5			
THIRD ANGLE PROJECTION			
QTY :			
FINISH :			
SCALE : 1:1			

Pulse **RoHS Compliant**
FULL RISE ELECTRONIC CO., LTD
 TITLE
 TOP ENTRY PCB JACK 8P SMT
 DRAWING NO. GE523A32-LA SIZE A3 REV 0
 /PART NO. SEE NOTE SHEET 1 OF 1
 DO NOT SCALE DRAWING

8 | 7 | 6 | 5 | 4 | 3 | 2 | 1

H
G
F
E
D
C
B
A