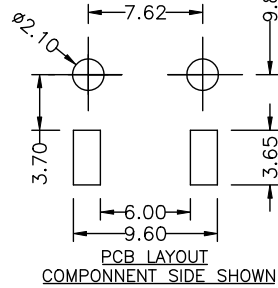
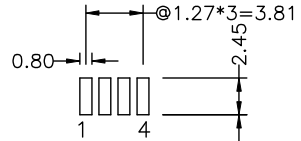
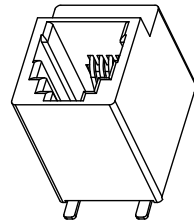
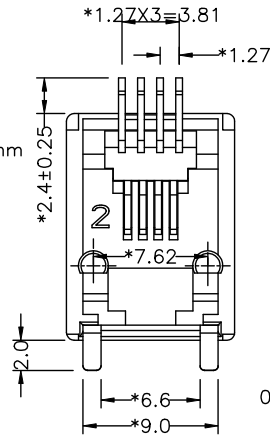
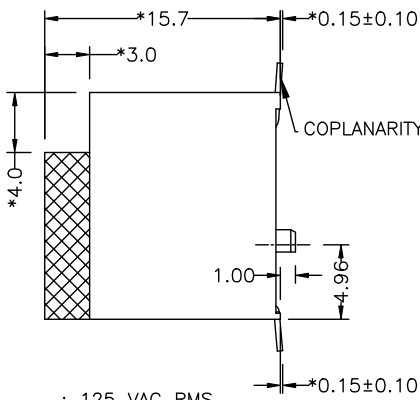
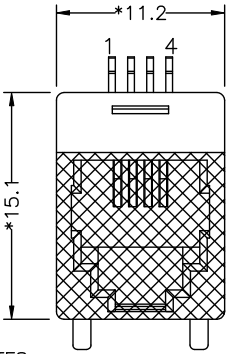


D1RFRD006

REVISION RECORD				
REV	ECO	DESCRIPTION	DRFT	CHKD



NOTES:

ELECTRICAL:

- 1. VOLTAGE RATING : 125 VAC RMS.
- 2. CURRENT RATING : 1.5 AMP.
- 3. CONTACT RESISTANCE : 35 MILLIOHMS MAX.
- 4. INSULATION RESISTANCE : 1000 MEGOHMS MIN @ 500 VDC.
- 5. DIELECTRIC STRENGTH : 1000 VAC RMS 60Hz, 1MIN.

MECHANICAL:

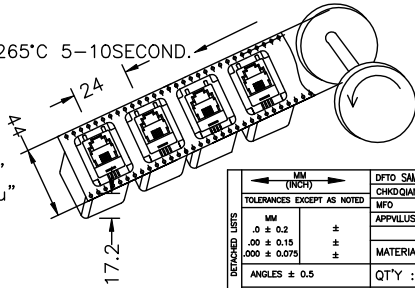
- 1. HOUSING MATERIAL : FR52.
- 2. CONTACT MATERIAL : PHOSPHOR BRONZE t=0.35mm.
- 3. PLATING : GOLD PLATING OVER NICKEL.
- 4. OPERATING LIFE : 750 CYCLES MIN.
- 5. PCB RETENTION POST-SOLDER: 10 LBS MIN.

ENVIRONMENTAL:

- 1. STORAGE : -40°C TO +85°C.
- 2. OPERATION: -40°C TO +85°C.
- 3. INFRARED SOLDER TEMPERATURE : 255°C TO 265°C 5-10SECOND.

MATES WITH MODULAR PLUG CONFORMING TO  
FCC PART 68, SUBPART F.  
CUL FILE NO: E163191.

ROHS PART NUMBER: E5244-700BUX-L



- 1-3u" 2-6u"
- 3-15u" 4-30u"
- 5-50u"

MM (INCH)		DFTD SAMMY	DATE 03/31/05	FULL RISE ELECTRONIC CO., LTD	
TOLERANCES EXCEPT AS NOTED		CHKD QIANPIU	DATE 2005/3/31	TITLE (W/O PANEL STOP)	
M/M		MFO	DATE	TOP ENTRY PCB JACK 4P	
.0 ± 0.2 ±		APP LUSHENG	DATE 2005/3/31	DRAWING NO. GE523107-LA	
.00 ± 0.15 ±		MATERIAL :		SIZE A3	
.000 ± 0.075 ±		QTY :		REV 0	
ANGLES ± 0.5		FINISH :		DRAWING NO. GE523107-LA	
THIRD ANGLE PROJECTION		SCALE :		PART NO. SEE NOTE	
				DO NOT SCALE DRAWING	
				SHEET OF	

8 | 7 | 6 | 5 | 4 | 3 | 2 | 1

H  
G  
F  
E  
D  
C  
B  
A